

# Equity Tracker

## *Updates on Development*

Equity Advisory Committee

2022 April 7

**Brian H. Y. Lee, Ph.D.**

Program Manager

**Mary Richards**

Assistant Planner



Puget Sound Regional Council



- **Introduction**
  - **Recap: Elements of the Equity Tracker project**
  - **Questions from Feb EAC meeting**
  - **Feedback on members engagement**
- **Data**
  - **Organization & selection overview**
  - **Ways to measure & track disparities**
- **Context & Solutions**
- **Draft webpages**

# Introduction



# Elements of the Equity Tracker project



## Primary goals

- Measure life outcome disparities between communities
- Track performance over time in closing equity gaps
- Publicly hold PSRC & its partners accountable

## Key takeaways from peer reviews

- Foundation based on VISION 2050
- Systematic & rigorous evaluation of data
- Uses: first info provision, then data sharing
- Provide context & solutions for data

# Questions from Feb EAC Meeting



## Via Google link for members



Puget Sound Regional Council

Questions? Ask anonymously below:

- What about data from supportive service providers e.g., DSHS, human service nonprofits, etc.? What about data from public housing authorities and nonprofit developers for low-income tenants and low-income homeowners? What about data from transitional and permanent supportive housing organizations?
- Mapping the themes with UN 17 sustainable development goals?
- How about free public electric wheelchair and/or bicycle infrastructure?
- Having a short commute to everything you need is a privilege (5-min living). Can we marry supportive services with public transit e.g. yoga class on the ferry ride, wifi on

# Questions from Feb EAC Meeting



## Via Zoom chat

- *Brenda Fantroy-Johnson:*  
Is it possible to track in areas where it may be difficult to track (where the majority of the population is white)?
- *Chris Stearns:*  
Suggestion: add in: criminal justice system  
Would PSRC be open to including criminal justice system in the tracker? Incarceration has a significant and lasting effect on life outcomes and community health.  
I think that the most basic data point may be equity/bias in detentions, arrests, charging, sentencing in the regional criminal justice system. But there are myriad other outcomes like health care, mental health, as well as economic indicators like loss of household and individual incomes, lack of access to jobs and housing due to criminal records, and lack of accumulation of wealth
- *Dionne Bonner:*  
I'm also thinking about the long term use of a tracker like this. So many life details change how are updates incorporated and communicated to collaborators etc..
- *Ben Sung Henry:*  
My question is around data. How do you decide which datapoints to include? Is there a framework you're using that has found, these datapoints (health outcomes, educational attainment, incarceration rates, employment, etc.) are reliable indicators of an equitable society?  
Also, will the data be cross-tabbed, like a single data point like educational attainment, broken down by race, gender, disabilities, etc.
- *Jewel Sheperd-Sampson:*  
I like that idea as well Lucretia. Having a short video showing how to use the system could condense information as well.
- *Laurenna Sayles:*  
Yes, a visual about how to use the system is a great idea. Especially for different populations and those w/ language barriers.

# Feedback on members engagement



## Via Zoom polls

### 1. About which parts of the Equity Tracker project would you want to know more?

(14 out of 16 in attendance at start of meeting responded)

- **Data, context, solutions (9)**
- **User experience (7)**
- **Foundation on VISION 2050 (6)**
- **Systematic data evaluation (6)**
- **Uses: provide info, share data (5)**

### 2. How would you like to be involved?

(13 out of 16 in attendance at start of meeting responded)

- **Test using draft product (10)**
- **Respond to surveys & provide feedback on specific materials (9)**
- **Conduct deep dives with PSRC staff into components (9)**
- **Receive period updates & overviews (6)**
- **Other ideas (2)**





# Organize & select outcome metrics



Based on

## VISION 2050

Themes (8)

Climate

Economy

Environment

Growth and  
Development

Housing

Public  
Services

Regional  
Collaboration  
and Health

Transportation

*There are specific goals & policies related to each theme. Outcome metrics can help us measure progress & understand if goals are being met & if policies are working.*

# Organize & select outcome metrics



Based on

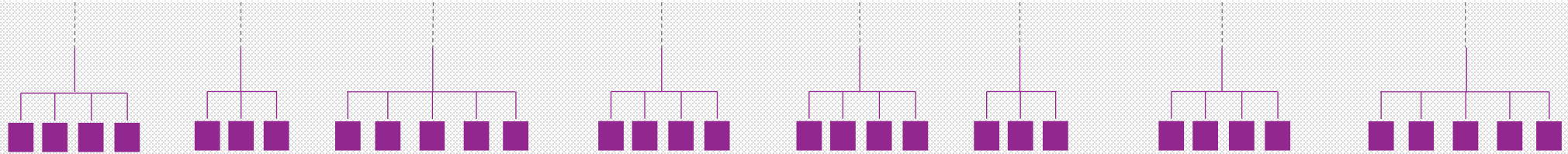
## VISION 2050

### Themes (8)



*There are specific goals & policies related to each theme. Outcome metrics can help us measure progress & understand if goals are being met & if policies are working.*

### Gather potential outcome metrics from peer review (150+)



# Organize & select outcome metrics



Based on

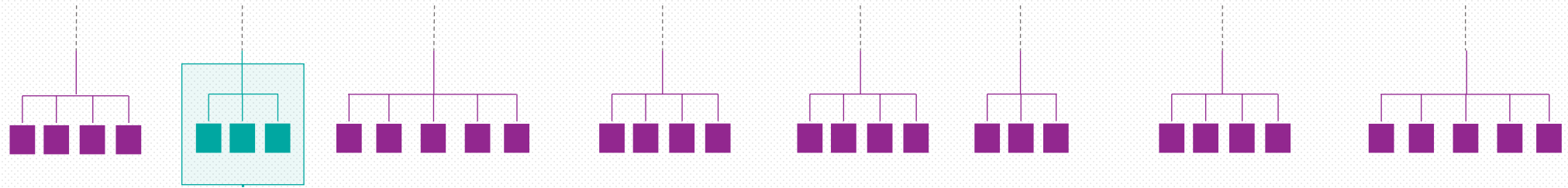
## VISION 2050

### Themes (8)



*There are specific goals & policies related to each theme. Outcome metrics can help us measure progress & understand if goals are being met & if policies are working.*

Gather potential outcome metrics from peer review (150+)



Select outcome metrics

*Detailed information about the outcome metrics, evaluation criteria, & the selection process will be described in forthcoming documentation.*



**Next steps: analyze and visualize data**

# Measure & track disparities



*Based on foundational work in*

## **VISION 2050 & the Draft Regional Transportation Plan (RTP)**

To measure & track disparities in the RTP, six equity demographics were identified

**People of  
Color**

**People with  
Low Incomes**

**People with  
Disabilities**

**Youth**  
(Ages 5-17)

**Older Adults**  
(Age 65+)

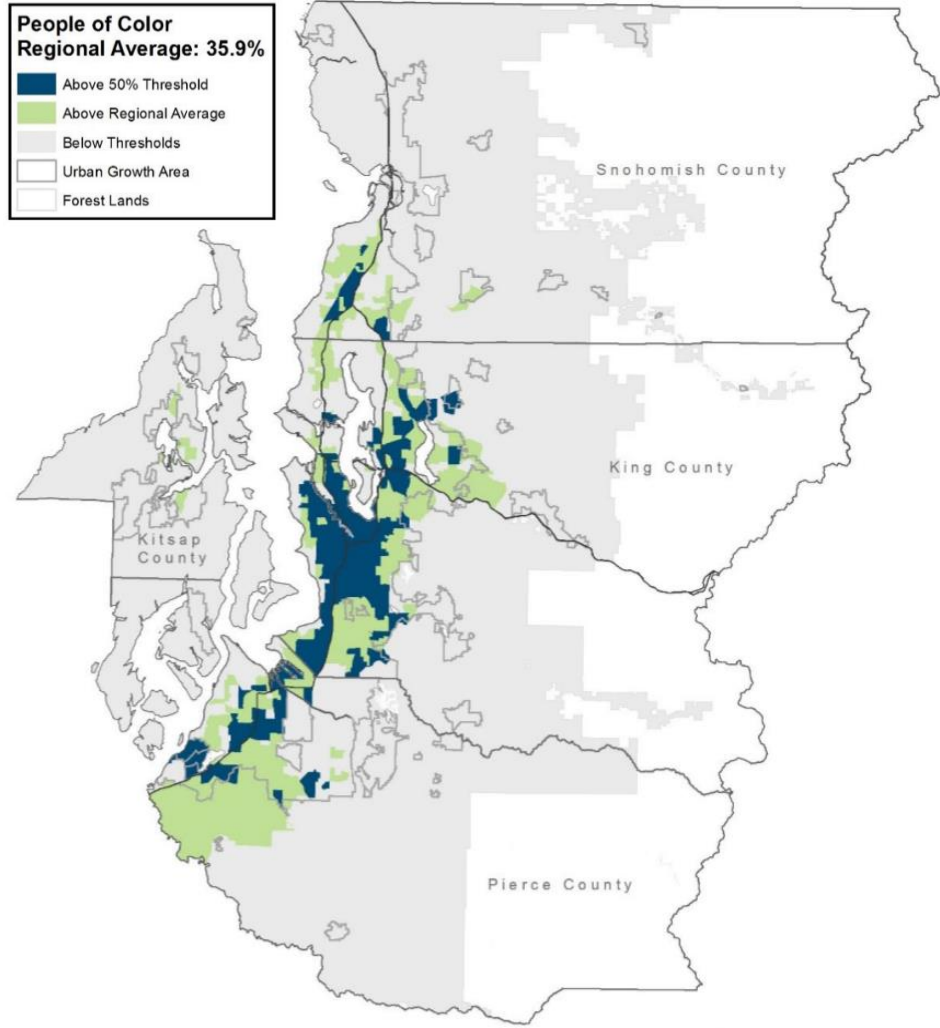
**People with  
limited English  
proficiency**  
(LEP)

To analyze outcomes, the RTP identified Equity Focus Areas (EFAs) with higher proportions of members of these groups.

# Equity Focus Areas (EFAs): place-based



## Example of Equity Focus Areas (People of Color)



### Identify EFAs

- Categorize places based 50% threshold & regional average
- Focus on areas above these proportions

### Use EFAs in analysis

- Calculate average outcome metrics for people in EFAs
- Compare to averages of region or non-EFAs

### Place-based analysis

- EFA method is place-based
- Average outcome metrics are calculated for everyone, not just members of specific groups

### Person-based analysis

- Grouping by people instead of places could improve measure of disparities
- Wherever possible, this would shift analysis to person-based

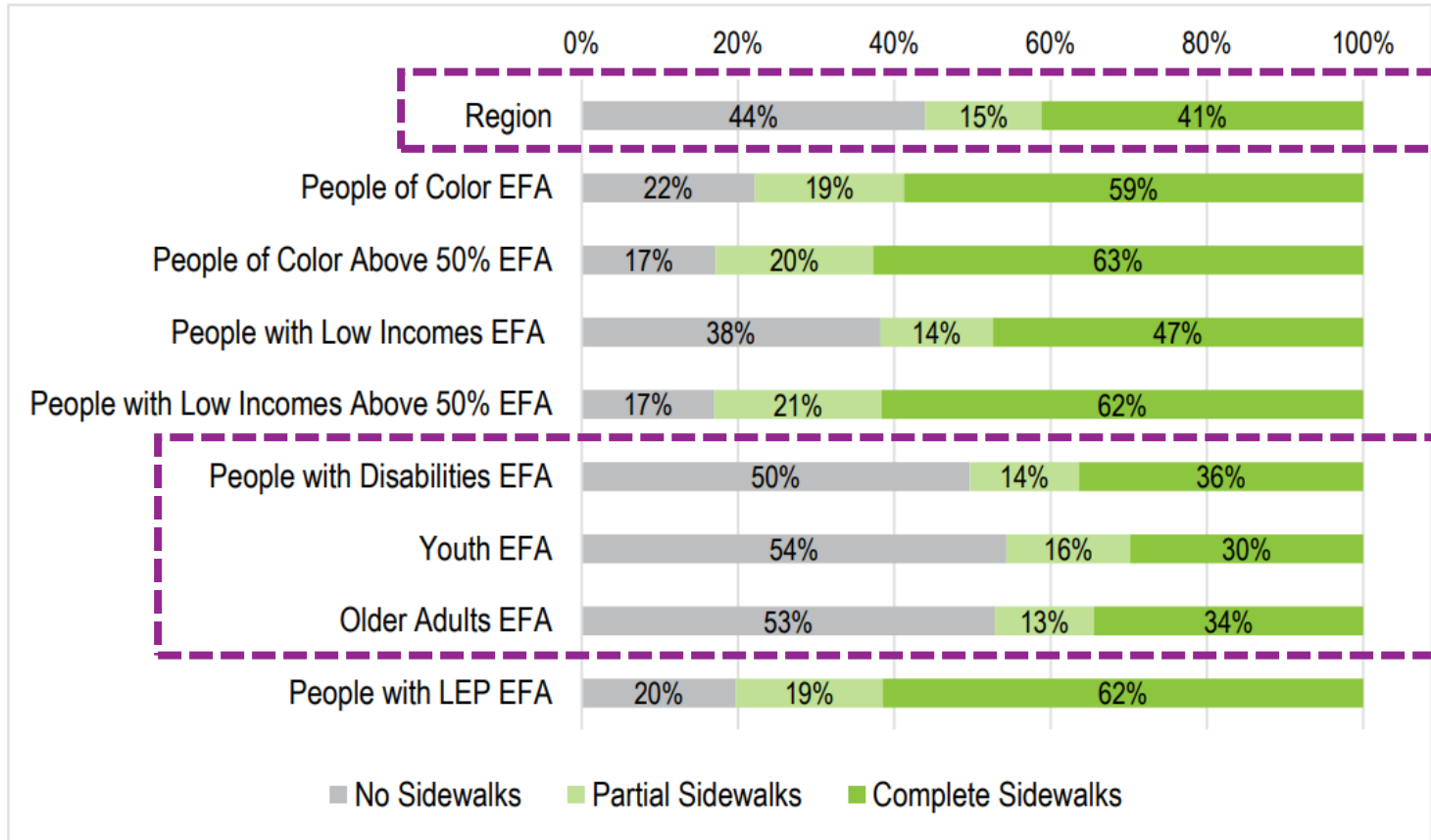
Image: PSRC Draft Regional Transportation Plan (1/13/2022); Figure 1, [Appendix F](#), page 13

# Use of Equity Focus Areas (EFAs)



## Example of EFA application

Figure 23. Percentage of Sidewalks on Arterials by Completeness, 2018

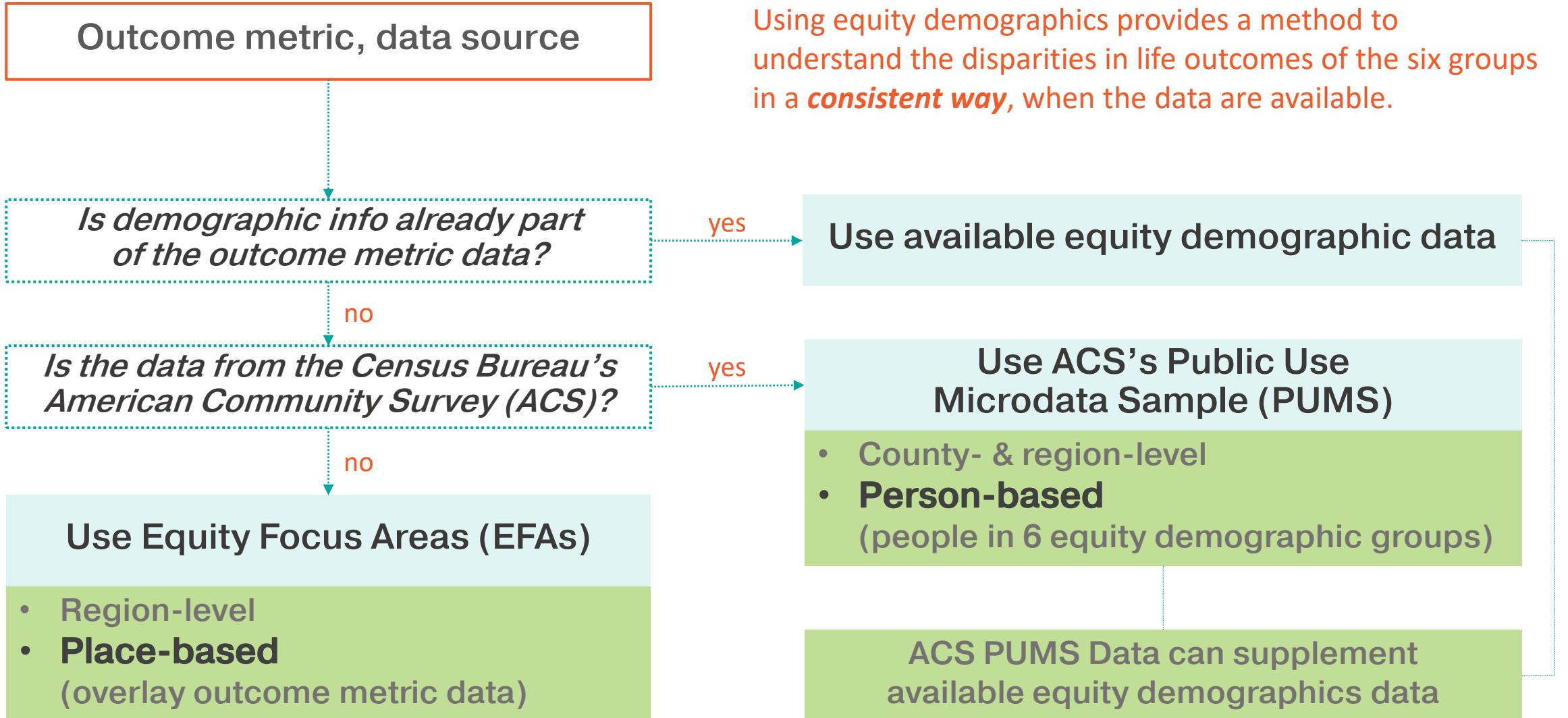


**Sidewalks on arterials**

- Compare EFAs to Region
- People with Disabilities, Youth, & Older Adults EFAs have more arterials with no sidewalks

Image: PSRC Draft Regional Transportation Plan (1/13/2022); Figure 23, [Appendix E](#), page 45

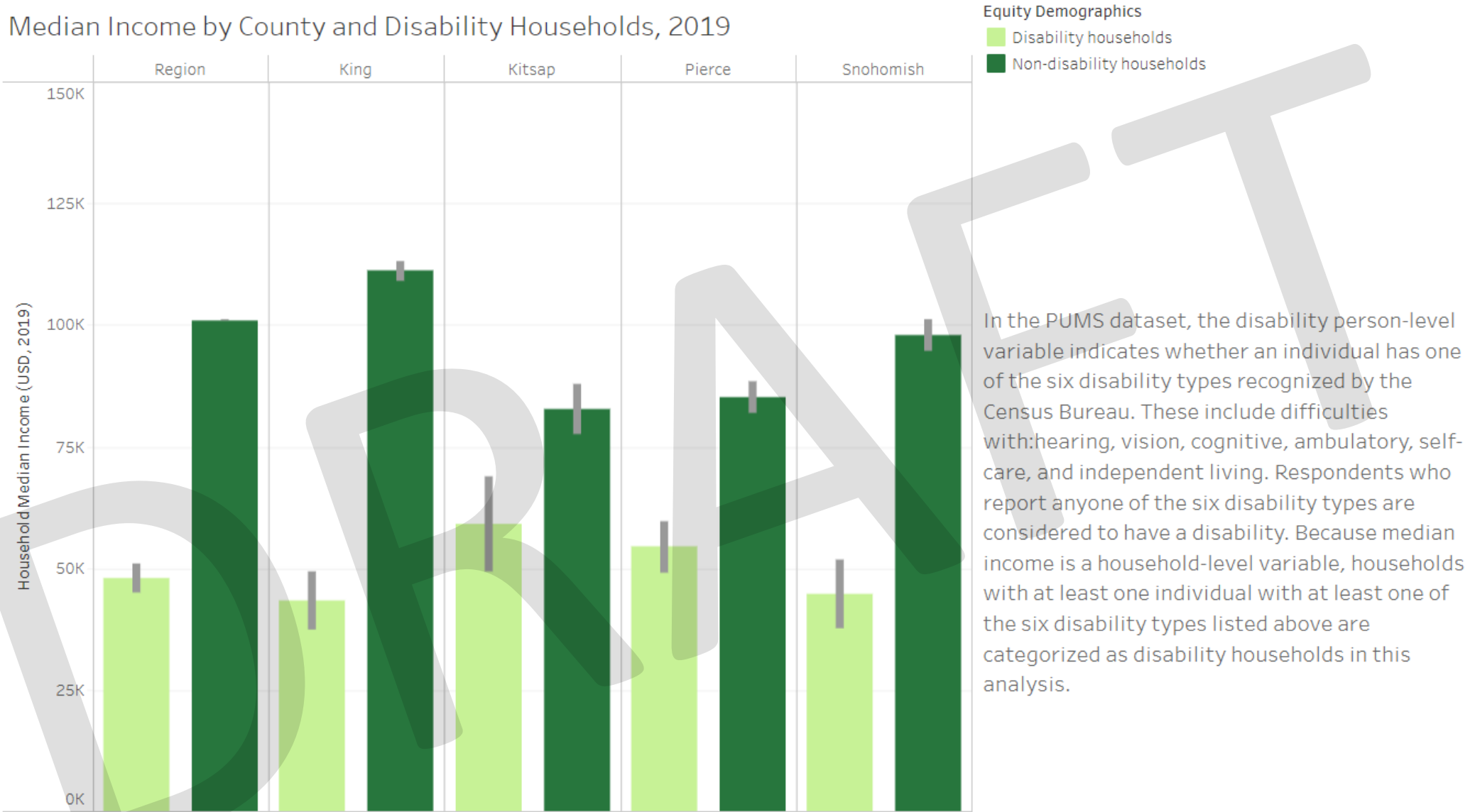
# Place-based & person-based approaches



# Census PUMS person-based approach



Median Income by County and Disability Households, 2019





# Context & Solutions





## **Data will be preceded by regional context**

- Explain importance of different life outcomes
- Describe how selected data can provide insights
- Point to root causes of disparities

## **User experience: draft webpages & survey**

**Will solicit ideas from members on how to add personal stories to complement planning/policy info**



## **Data will be followed by ideas for solutions**

- Include available resources on tackling disparities
- Offer examples of community efforts

## **User experience: draft webpages & survey**

**Will solicit ideas from members to crowdsource available resources for solutions & connect with organizations working on closing equity gaps**

# Next steps





*Information will be emailed to EAC members early next week*

## User experience feedback

### Equity Tracker draft webpages

Navigate through the draft webpages (total of 4)

*Please do not share web links with anyone. These pages are for review by EAC members only.  
Please do not quote or reference information presented. All draft material is subject to change.*

### Online survey

Instructions will help guide you through the webpages

Survey questions will prompt you to find specific information and provide your thoughts about your experience

# Thank you!

**Brian H. Y. Lee, Ph.D.**  
Program Manager  
[blee@psrc.org](mailto:blee@psrc.org)

**Mary Richards**  
Assistant Planner  
[mrichards@psrc.org](mailto:mrichards@psrc.org)



Puget Sound Regional Council