

PSRC's Federal Transit Administration Funding Process

Transportation Policy Board
June 9, 2022



Puget Sound Regional Council

Today's Discussion

- Overview of PSRC's Federal Transit Administration funding
- Overview of transit agencies and service throughout the region
 - Frequent transit service opportunities for equity populations
- Discussion and next steps



Revenue Sources for Region's Transit Agencies

Sales Tax

Rates vary by geography

Farebox Revenue

Includes all modes

Federal Sources

FTA Programs
Other DOT Grants

Motor Vehicle Excise Tax (MVET)

Sound Transit is only recipient

Other Local Sources

Property Taxes
Other

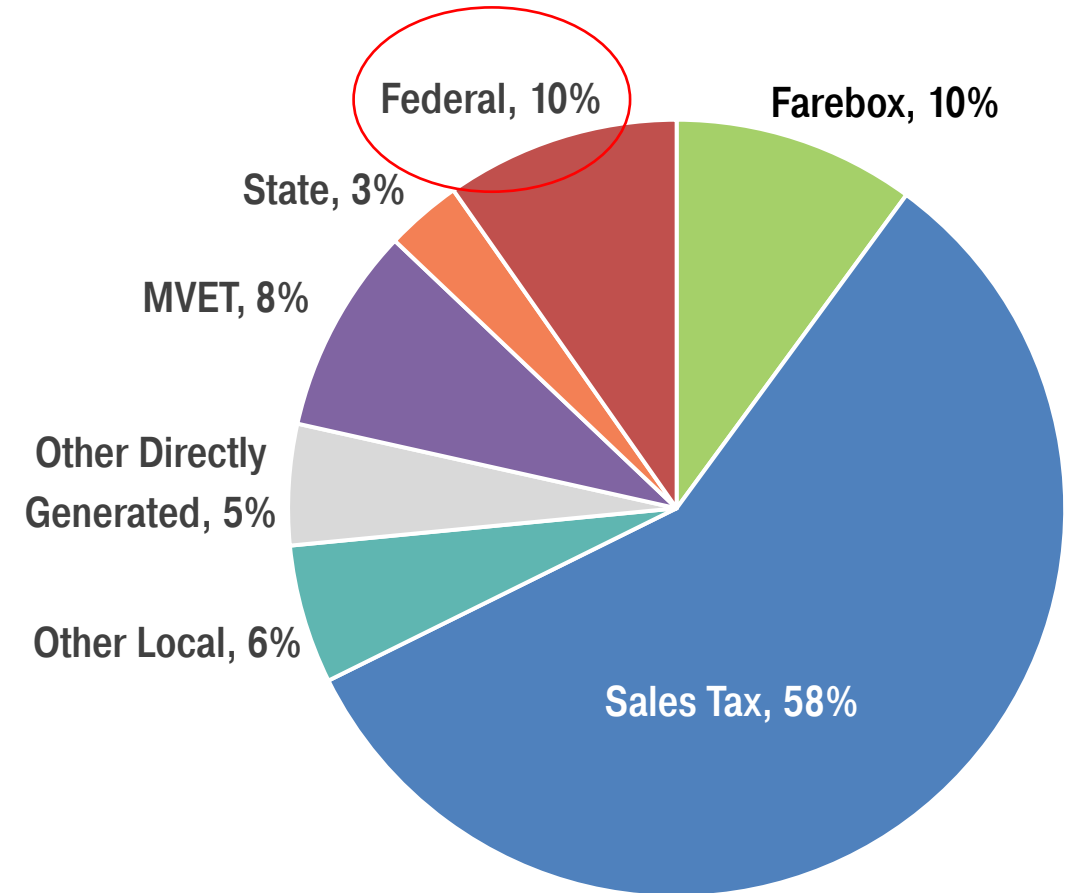
Other Directly Generated Revenue

Park & Ride Revenue
Advertising
Sale/Disposal of Assets

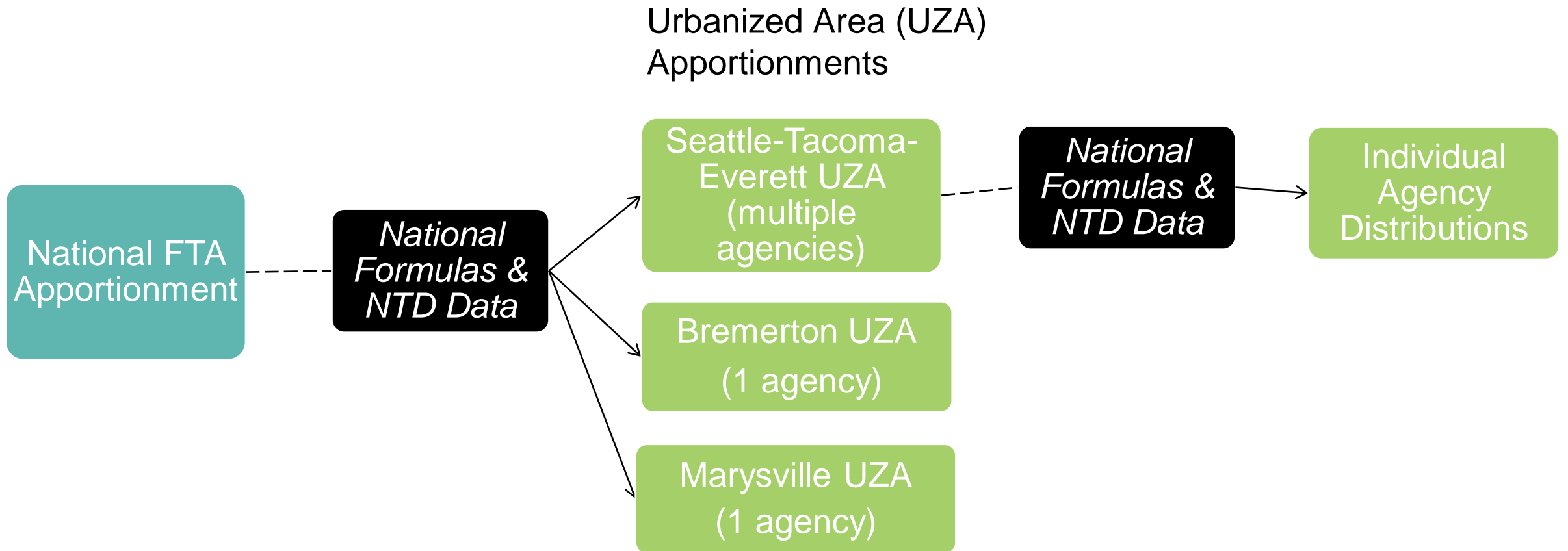
State Sources

Regional Mobility Grants
Other State Transportation Funds

Total Capital & Operating Revenues: \$3.94 billion



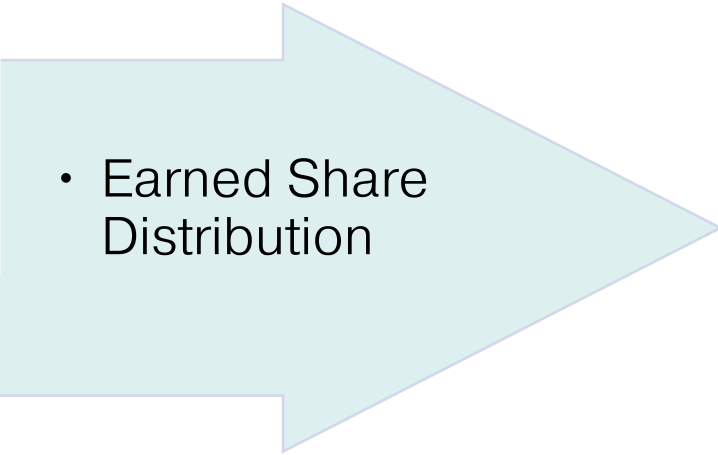
FTA Formula Programs and Distributions



How FTA Funds Come to the Region

**Transit Agency
Operating & Service
Data**
(revenue and passenger miles)

FTA uses transit data as self-reported in the National Transit Database (NTD)



- Bremerton UZA 100%
- Marysville UZA 100%
- Seattle-Tacoma-Everett UZA ~ 86-88%

**Regional Attribute
Data**
(population, density)

FTA uses data from the decennial U.S. Census and the American Community Survey (ACS)



- Seattle-Tacoma-Everett UZA ~12-14%



PSRC's Federal Transit Administration Funding

5307 Urbanized Area Formula Program

- Planning, engineering, design and evaluation of transit projects and studies
- Capital investments in bus and bus-related activities
- Capital investments in new and existing fixed guideway systems
- Associated transit improvements and some mobility management expenses
- Specified operating expenses

5337 State of Good Repair Formula Program

- Maintain (replace and rehabilitate) fixed guideway and high intensity motorbus systems

5339 Bus and Bus Facilities Formula Program

- Replace, rehabilitate and purchase buses, vans, and related equipment
- Construct bus-related facilities

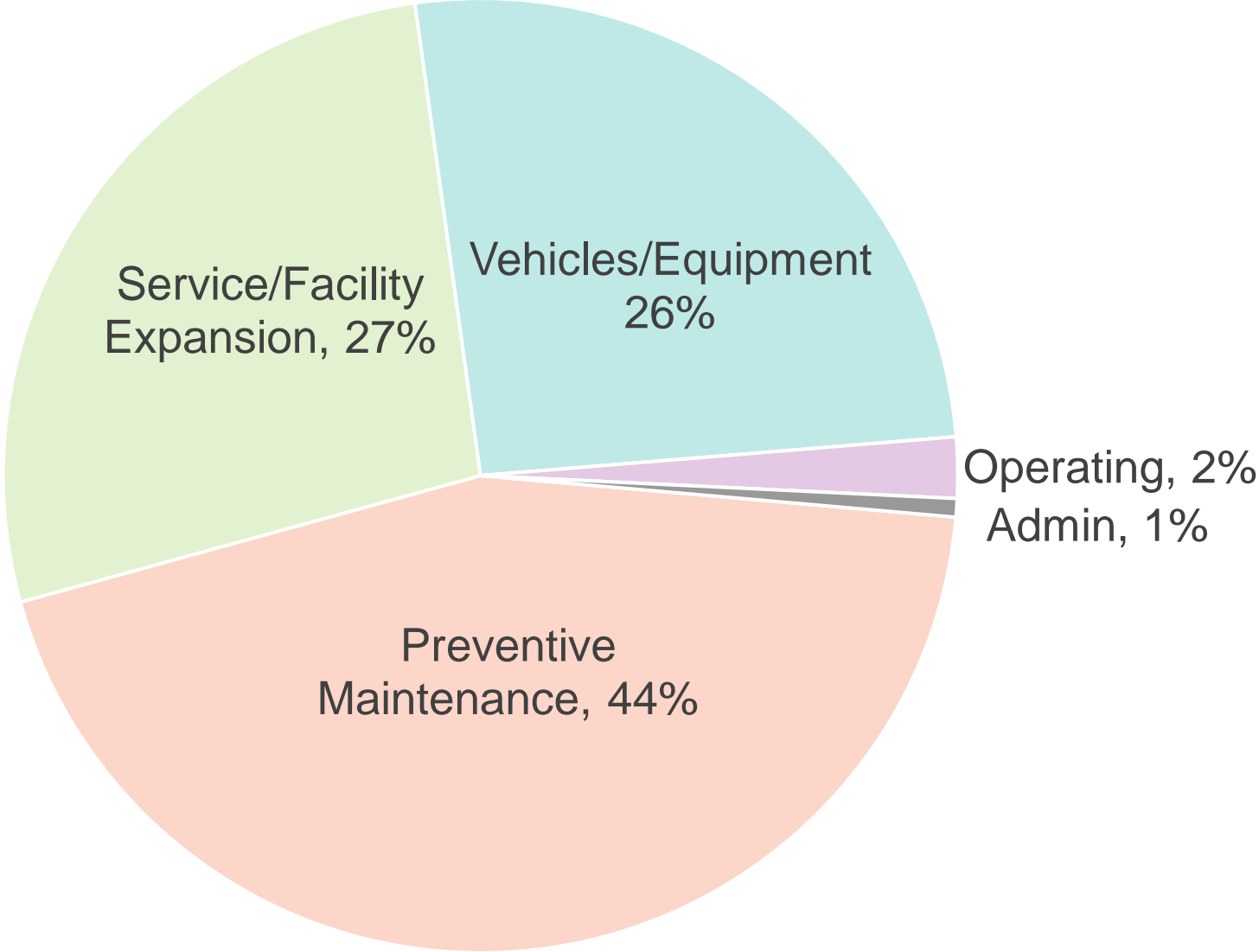


PSRC's FTA Funds – 2021 Distribution

- Total FTA funds = \$201 million
 - \$4.5 million Bremerton UZA – Kitsap Transit
 - \$2.4 million Marysville UZA – Community Transit
 - \$194 million STE UZA – Nine transit agencies
 - \$170 million distributed via earned share process – 88%
 - \$11.2 million distributed to preservation set-aside
 - \$12.9 million distributed to regional competition
- } regional portion, 12%



2021 FTA Funds - Distribution by Project Type



PSRC's FTA Funds – 2022-2026

Project Selection

- PSRC awards funding to projects every two years, based on estimates.

FTA Apportionments

- FTA releases actual funding amounts each year by program for UZAs.

Adjustments Process

- Agencies revise programming to projects every year based on actual funding compared to estimates.

2018 project selection process – 2021-2022 funds

2020 project selection process – 2023-2024 funds

2022 project selection process – 2025-2026 funds; *On hold*



Transit Service and Equity

Demographic data

Transit agency service boundaries

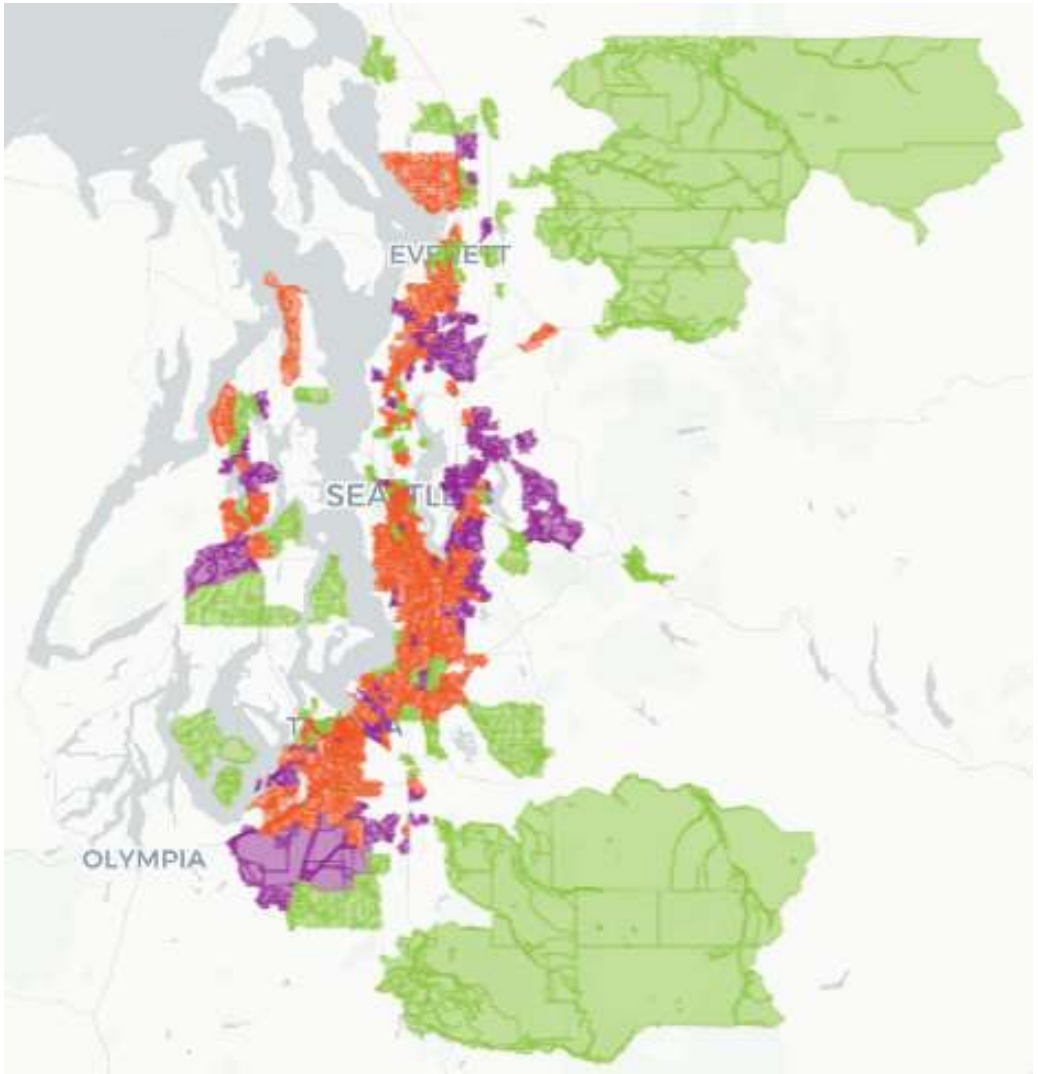
Frequent transit services throughout the region



County Demographics

County	Total Population	People of Color		People with Lower Incomes	
		Population	Share of Population	Population	Share of Population
King County	2,214,900	885,500	40%	428,000	19%
Kitsap County	268,700	60,300	22%	57,400	21%
Pierce County	883,700	285,900	32%	215,200	24%
Snohomish County	815,100	242,400	30%	151,100	19%
PSRC Region	4,182,400	1,474,100	35%	851,700	20%

Equity Focus Areas: Race & Income above County Average



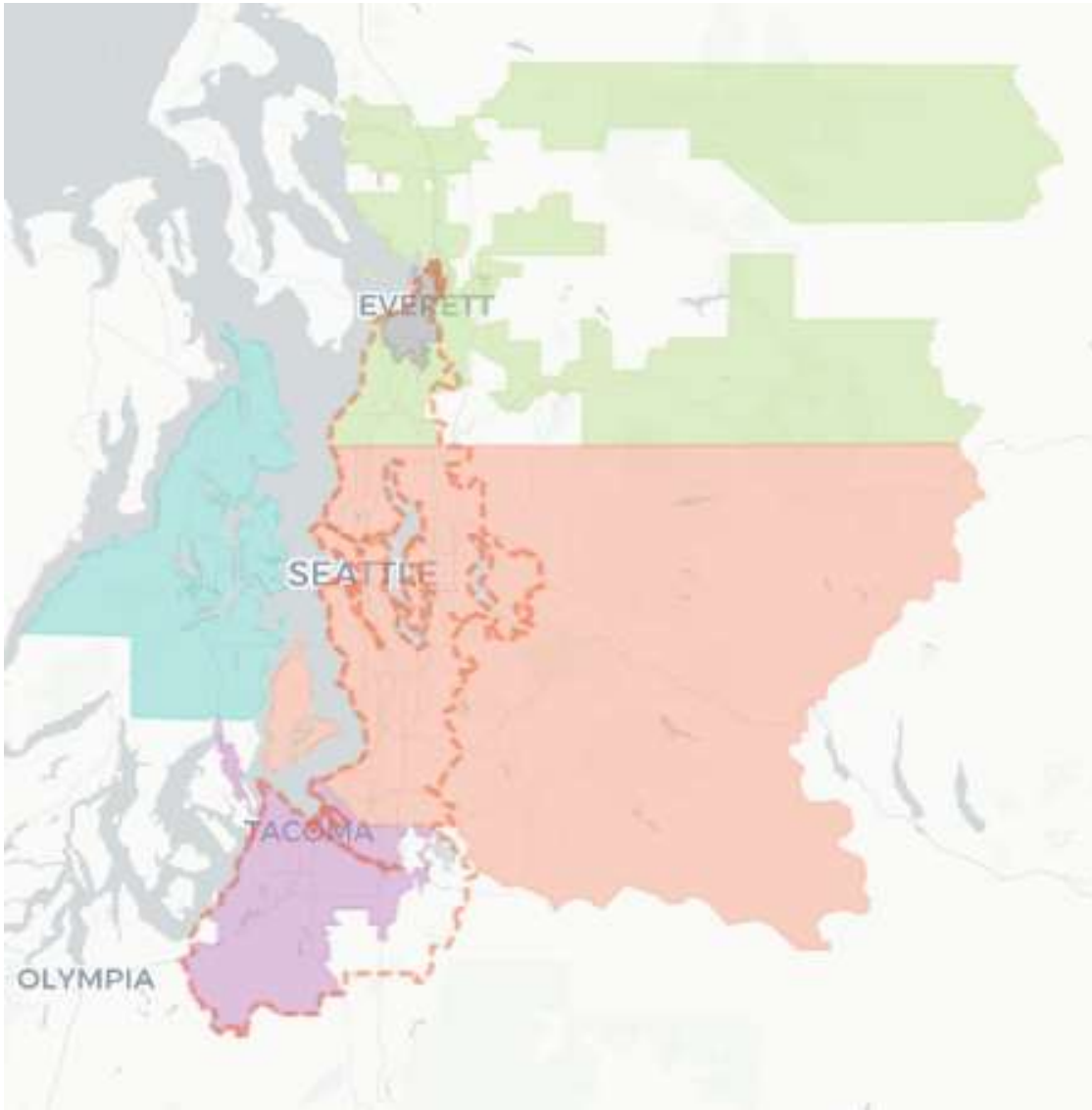
People of Color
 People with Lower Incomes
 Both



Transit Service Boundaries Demographics

Transit Agency	Total Population in Service Boundary	People of Color in Service Boundary		People with Lower Incomes in Service Boundary	
		Population	Share of Population	Population	Share of Population
Community Transit	570,400	173,600	30%	100,100	18%
Everett Transit	109,700	38,300	35%	34,200	31%
King County Metro	2,214,200	885,300	40%	427,900	19%
Kitsap Transit	268,300	60,200	22%	57,400	21%
Pierce Transit	566,000	216,200	38%	160,300	28%
Sound Transit	3,188,200	1,273,500	40%	689,300	22%

Transit Agency Service Boundaries



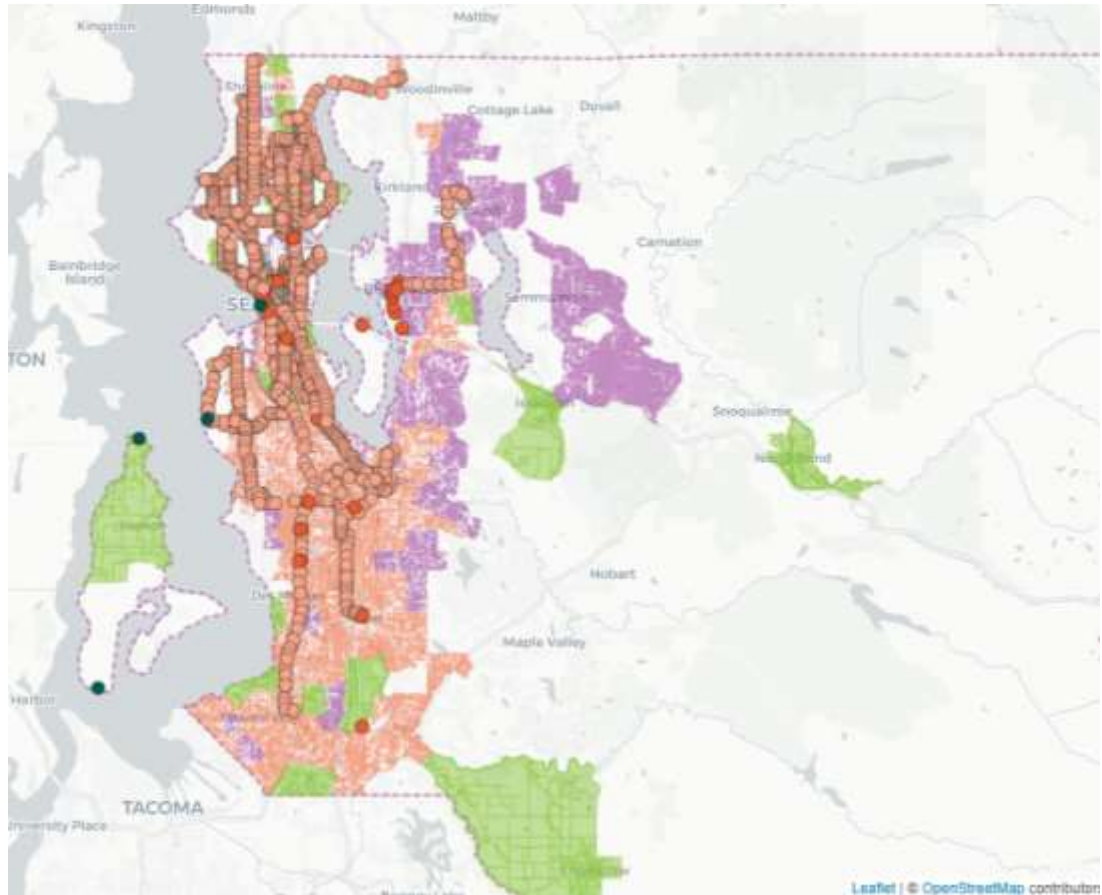
King County Access to Frequent Transit

Frequent transit is defined as transit that operates with at least 15-minute frequencies for at least 12 hours of the day or any High-Capacity Transit mode such as BRT, Commuter Rail, Light Rail or Ferry. In King county there are:

- 1 frequent bus route by Sound Transit and 28 frequent bus routes by King County Metro
- 1 Light Rail route operated by Sound Transit & 2 Streetcar Routes from City of Seattle
- 2 Commuter Rail routes operated by Sound Transit (Sounder North & South)
- 4 Multi-Modal Ferry Routes operated by Washington State Ferries and 3 passenger-only routes (2 by King County and 1 by Kitsap Transit)

Transit Agency	Total Population with Access to Frequent Transit		People of Color with Access to Frequent Transit		People with Lower Incomes with Access to Frequent Transit	
	Population	Share of County Population	Population	Share of County Population	Population	Share of County Population
All Agencies	1,012,000	46%	432,100	49%	234,200	55%

Frequent Transit Stops with Equity Focus Area



- Washington State Ferries Terminal
- King County Metro Stops
- City of Seattle Stops
- Sound Transit Stops
- People of Color
- People with Lower Incomes
- Both



Kitsap County

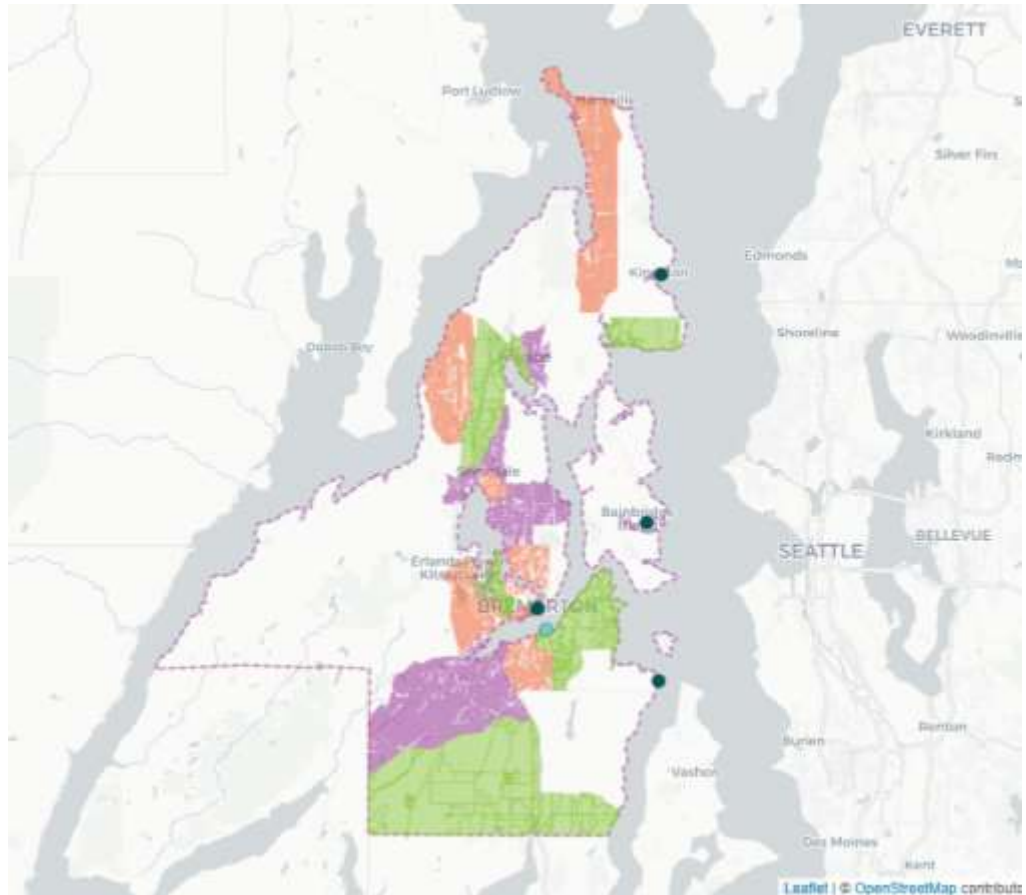
Access to Frequent Transit

Frequent transit is defined as transit that operates with at least 15-minute frequencies for at least 12 hours of the day or any High-Capacity Transit mode such as BRT, Commuter Rail, Light Rail or Ferry. In Kitsap county there are:

- 4 Multi-Modal Ferry operated by Washington State Ferries
- 3 Passenger-Only Ferry Routes operated by Kitsap Transit

Transit Agency	Total Population with Access to Frequent Transit		People of Color with Access to Frequent Transit		People with Lower Incomes with Access to Frequent Transit	
	Population	Share of County Population	Population	Share of County Population	Population	Share of County Population
All Agencies	12,100	4%	2,600	4%	3,400	6%

Frequent Transit Stops with Equity Focus Area



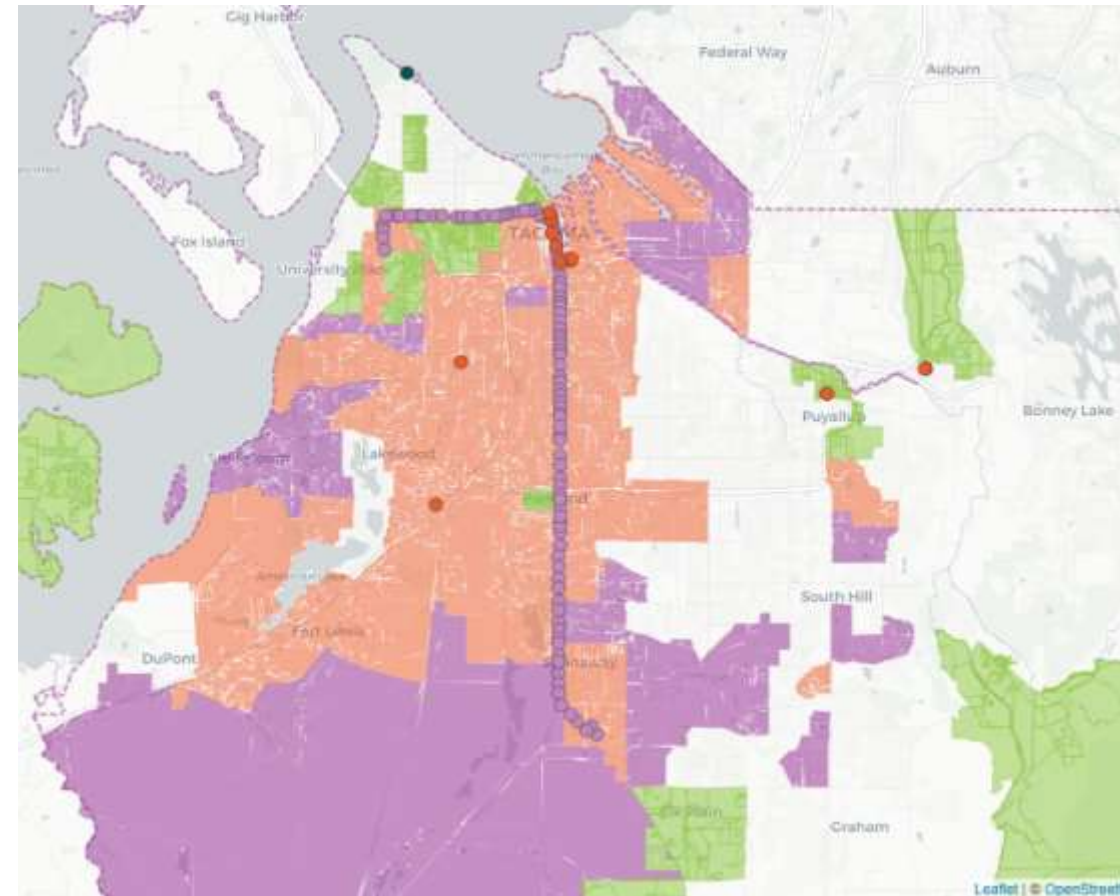
Pierce County Access to Frequent Transit

Frequent transit is defined as transit that operates with at least 15-minute frequencies for at least 12 hours of the day or any High-Capacity Transit mode such as BRT, Commuter Rail, Light Rail or Ferry. In Pierce county there are:

- 1 frequent bus route operated by Pierce Transit (Route 1)
- 1 Light Rail route operated by Sound Transit (Tacoma Link)
- 1 Commuter Rail route operated by Sound Transit (Sounder South)
- 1 Multi-Modal Ferry operated by Washington State Ferries

Transit Agency	Total Population with Access to Frequent Transit		People of Color with Access to Frequent Transit		People with Lower Incomes with Access to Frequent Transit	
	Population	Share of County Population	Population	Share of County Population	Population	Share of County Population
All Agencies	134,500	15%	53,400	19%	45,200	21%

Frequent Transit Stops with Equity Focus Area



Snohomish County

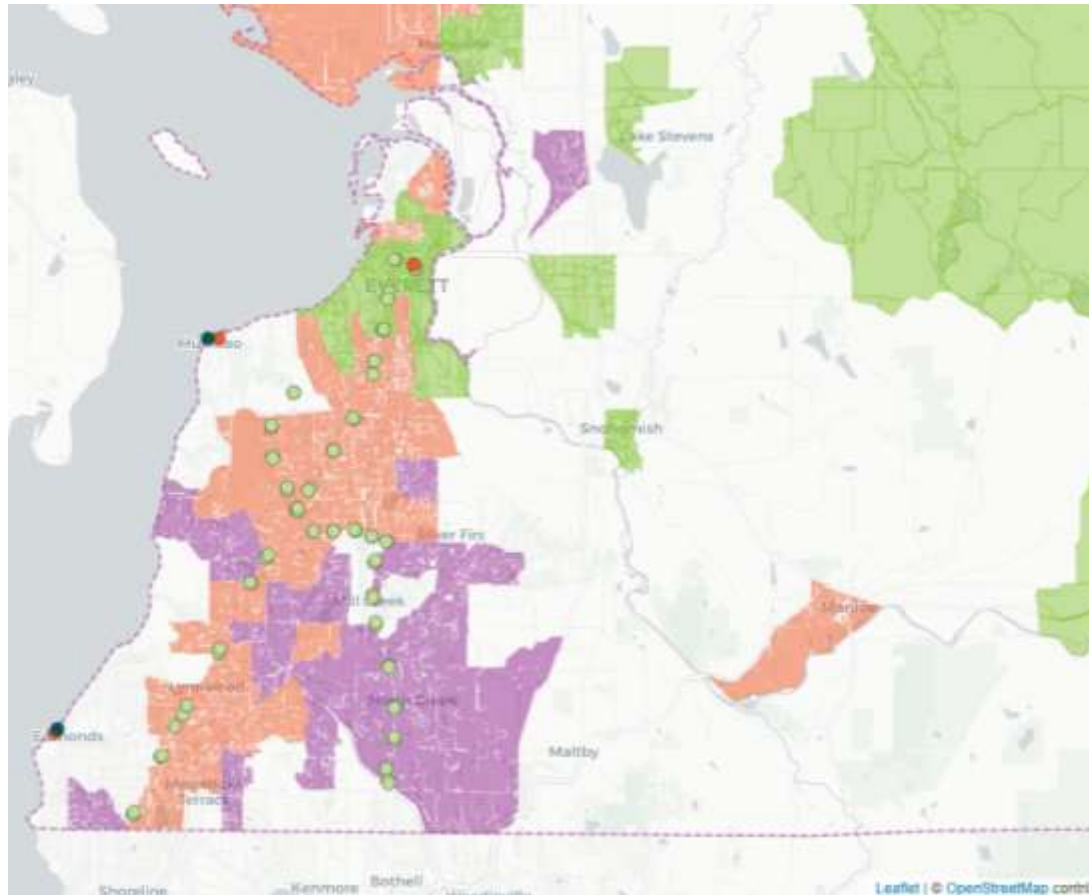
Access to Frequent Transit

Frequent transit is defined as transit that operates with at least 15-minute frequencies for at least 12 hours of the day or any High-Capacity Transit mode such as BRT, Commuter Rail, Light Rail or Ferry. In Snohomish county there are:

- 2 frequent bus routes operated by Community Transit (Swift Blue & Green)
- 1 Commuter Rail route operated by Sound Transit (Sounder North)
- 2 Multi-Modal Ferry Routes operated by Washington State Ferries

Transit Agency	Total Population with Access to Frequent Transit		People of Color with Access to Frequent Transit		People with Lower Incomes with Access to Frequent Transit	
	Population	Share of County Population	Population	Share of County Population	Population	Share of County Population
All Agencies	171,500	21%	70,100	29%	44,100	29%

Frequent Transit Stops with Equity Focus Area



Washington State Ferries Terminal
 Community Transit Stops
 Everett Transit Stops
 Sound Transit Stops

People of Color
 People with Lower Incomes
 Both



Access to Frequent Transit by County and Equity Focus Area

Transit Agency	County Population			Total Population with Access to Frequent Transit		People of Color with Access to Frequent Transit		People with Lower Incomes with Access to Frequent Transit	
	Total	People of Color	People with Lower Incomes	Population	Share of County Population	Population	Share of County Population	Population	Share of County Population
King County	2,214,900	40%	19%	1,012,000	46%	432,100	49%	234,200	55%
Kitsap County	268,700	22%	21%	12,100	4%	2,600	4%	3,400	6%
Pierce County	883,700	32%	24%	134,500	15%	53,400	19%	45,200	21%
Snohomish County	815,100	30%	19%	171,500	21%	70,100	29%	44,100	29%



Discussion / At Issue

- In 2021 the TPB Transit Caucus identified a set of principles and desired outcomes for the funding distribution:
 1. recognize that each transit agency has different operating characteristics and needs;
 2. funds should continue to support basic operating needs for existing services; and
 3. funds should also be used to assist transit agencies to increase frequency and span of service, particularly for communities currently underserved



Discussion / Next Steps

- TPB tasked with reviewing the process for distributing PSRC's FTA funds
 - Overarching policy direction and desired outcomes
- Potential working group formed for more detailed methodology discussions
- Ultimately a recommendation to the Executive Board on the distribution process for PSRC's 2025-2026 funds
 - Goal is to conduct process before the end of the year

