



Building Equitable Climate Resilience through Comprehensive Planning

Lara Whitely Binder

King County Climate Preparedness Program Manager

PSRC Regional Staff Committee | Feb 17, 2022



Local action on climate change is no longer a choice.

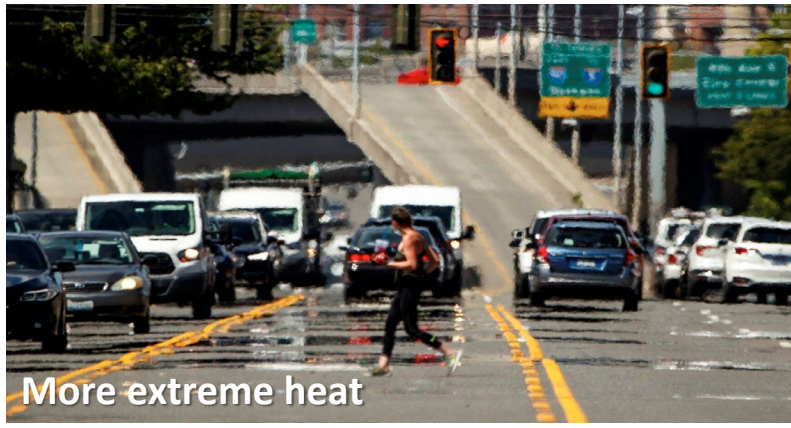
Climate change is happening, and it is accelerating.

We are already committed to a century or more of change.





Sea level rise/coastal flooding



More extreme heat



Increased river flooding



Impacts on salmon recovery



More urban flooding



Human health/community resilience



Increased potential for wildfire

Climate impacts that matter locally.
Map these to your plan.

Climate change affects everyone but not equally.

Inequities in

- Income and employment
- Transportation
- Access to healthy and affordable housing
- Food, energy security
- Health care access

create inequities in how climate change affects communities

KING COUNTY HEALTH, HOUSING AND ECONOMIC OPPORTUNITY MEASURES

LEGEND

— Freeways

RANKING

Census Tracts ranked by an index of health, housing and economic opportunity measures.



POPULATION MEASURES

Dark red areas most impacted populations
Dark blue areas least impacted populations

Life expectancy

74 years (Dark red areas) / 87 years (Dark blue areas)

Health, broadly defined:

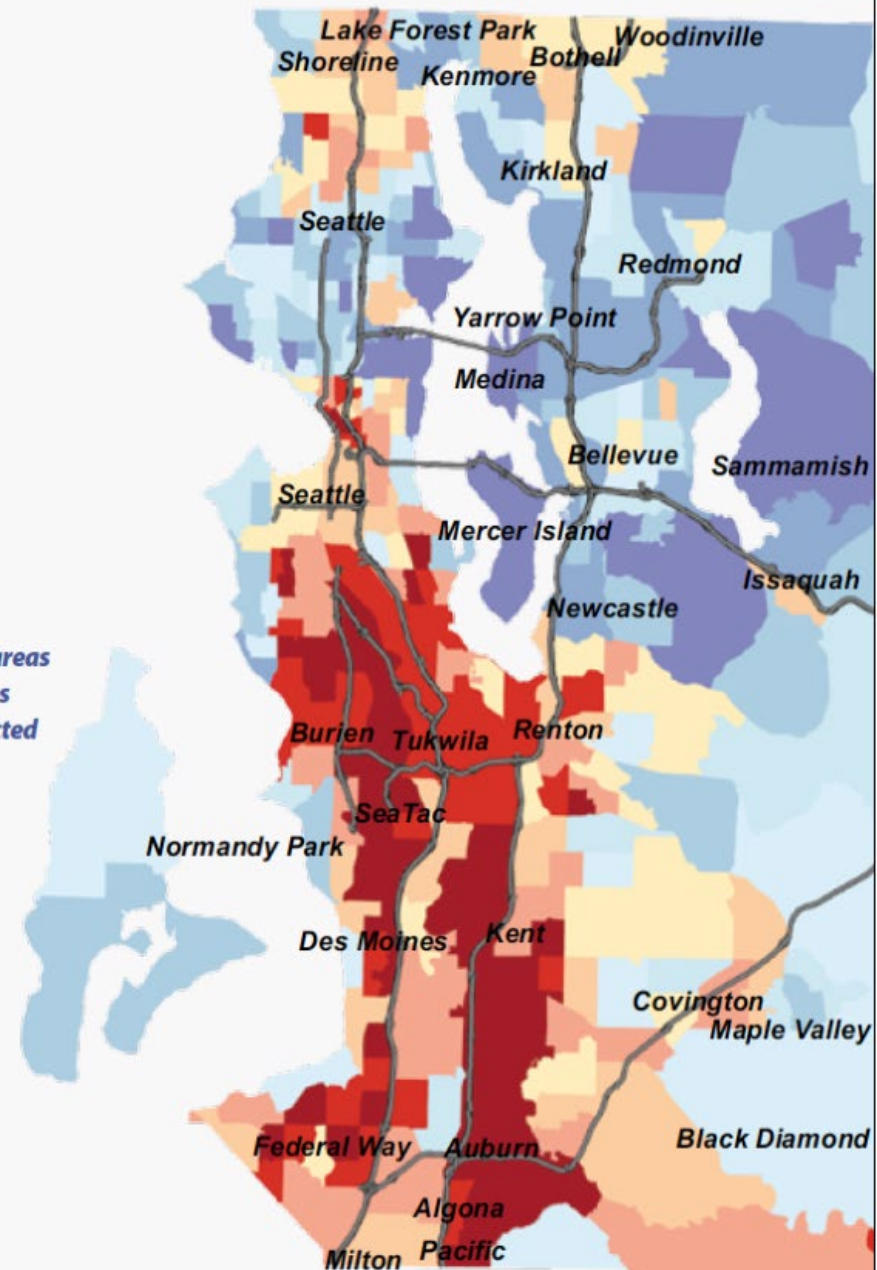
Adverse childhood experiences	20%	9%
Frequent mental distress	14%	4%
Smoking	20%	5%
Obesity	33%	14%
Diabetes	13%	5%
Preventable hospitalizations	1.0%	0.4%

Housing:

Poor housing condition	8%	0%
------------------------	----	----

Economic opportunity:

Low-income, below 200% poverty	54%	6%
Unemployment	13%	3%



Data Source: U.S. Census Bureau / Produced by: Public Health - Seattle & King County

Climate Preparedness and Comprehensive Plans

We are all starting from different places. What is your overall climate preparedness objective for *this* update?



This is new to my organization. We are adding climate preparedness for the first time.



We have some policies, but we are ready to make a stronger commitment



We have a lot of policies addressing climate impacts, but we are ready to go further

A Macro-level View: Three Key Steps

Setting the Expectation

“How are we addressing climate impacts and climate equity in our Comprehensive Plan update?”

Key process step: Scoping

Adding /Adapting Goals and Policies

“Do our goals, policies, and regulations clearly support climate preparedness and climate equity?”

Key process step: Policy, code development

Sustained Implementation

“Are we following through with resourcing and action?”

Key process steps: Agency implementation via functional plans, programs, budgets; accountability mechanisms

King County CPPs / Comp Plan

Adding /Adapting Goals and Policies

- CPP EN-13** Enhance the urban tree canopy to provide wildlife habitat, support community resilience, mitigate urban heat, manage stormwater, conserve energy, protect and improve mental and physical health, and strengthen economic prosperity. Prioritize places where Black, Indigenous, and other people of color, low-income, and frontline community members live, work, and play. *(NEW CPP)*
- CPP PF-24** Consider climate change, economic, equity, and health impacts when siting and building essential public services and facilities. *(NEW CPP)*
- CPP T-26** Develop a resilient transportation system (e.g. roadway, rail, transit, sidewalks, trails, air, and marine) and protect against major disruptions and climate change impacts. Develop prevention, adaptation, mitigation, and recovery strategies and coordinate disaster response plans. *(updated CPP)*
- KC E-219** King County shall integrate estimates of the magnitude and timing of climate change impacts into capital project planning, siting, design, and construction and also implement infrastructure operation and maintenance programs that consider full life-cycle costs and climate change impacts in asset management. *(KC 2016 Plan)*

Snohomish County CPPs

New section for Climate Change Policies includes the following:

- CC-5:** The County and cities **should plan for climate adaptation and resilience** by establishing a planning framework in local plans and coordinating regionally to identify, anticipate, prepare for, and adapt to likely impacts of climate change on natural systems, infrastructure, public health, and the economy. These efforts should identify measures to mitigate climate impacts *and include a focus on minimizing these impacts upon highly impacted and vulnerable populations. (UPDATED)*
- PS-9:** The County and cities, in collaboration with water providers and utilities, should **consider the potential impacts of climate change**, including impacts exacerbated by seasonal or cyclical conditions, when engaged in planning efforts to ensure the county's **long-term water supply. (NEW)**

Resources and Opportunities to Support Planning

Climate Impacts:

UW CIG local scenarios tool (summer '22)

- Summary details of projected changes at the county scale.
- Can inform discussions on what impacts are a concern.
- Provides supporting details for Comp Plan narratives.

Climate Summary Report

Tribe:
Snoqualmie Indian Tribe

Area of Interest:
King County

Example
from tribal
tool

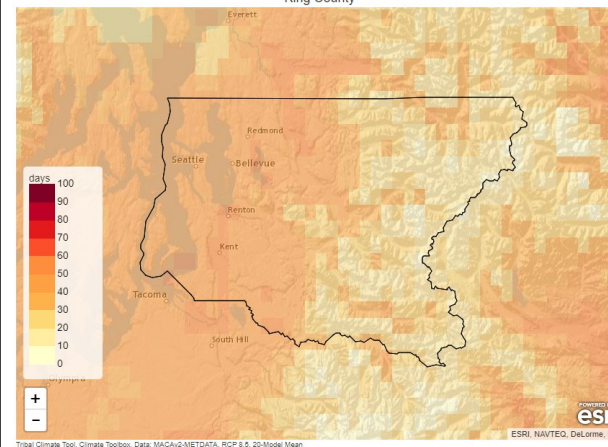


Annual Average Temperature

Average daily temperature from January to December.

Emissions	Time	Value	Change
Historical	1990	47.6 °F	
Low	2010-2039	49.8+/-0.6 °F	+2.2 °F
Low	2040-2069	51.7+/-1.1 °F	+4.1 °F
Low	2070-2099	52.7+/-1.4 °F	+5.1 °F
High	2010-2039	50.2+/-0.7 °F	+2.6 °F
High	2040-2069	53.0+/-1.4 °F	+5.4 °F
High	2070-2099	56.3+/-2.0 °F	+8.7 °F

Projected Change in Annual Days With Maximum Temperature Above 86° F (30° C) 2070-2099 (Higher Emissions (RCP 8.5)) vs. 1971-2000 (Historical) King County



Data Source: MACAv2-METDATA

Resources and Opportunities to Support Planning

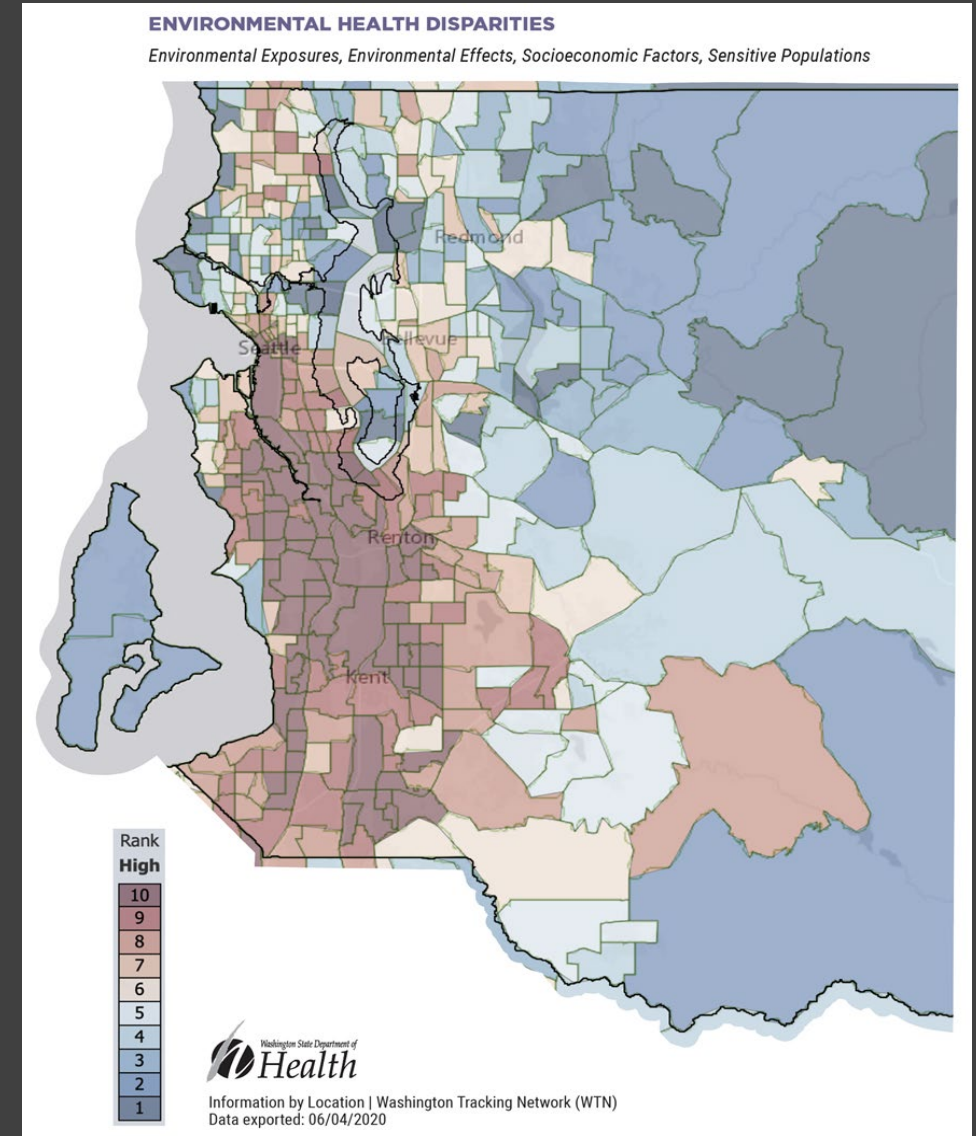
Climate Impacts:

UW CIG local scenarios tool (summer '22)

Equity:

WA DOH Environmental Health Disparities mapping
PSRC demographic data, County Public Health agencies (all available now)

- Can combine with other data layers to determine who is most at risk.



Resources and Opportunities to Support Planning

Climate Impacts:

UW CIG local scenarios tool (summer '22)

Equity:

WA DOH Environmental Health Disparities mapping
PSRC demographic data, County Public Health
agencies (all available now)

Climate Preparedness & Comp Planning:

Puget Sound Climate Preparedness Collaborative -
monthly calls, webinar series (spring/summer)

WA Commerce guidance (June '23)

PSRC guidance (spring '22), MRSC resources (avail.)



DISCUSSION

1. What climate impacts are you likely to focus on in this Comp Plan update?
2. What would be most helpful for getting started?
3. What is needed to sustain this work in planning?
(one rule: can't say \$\$)

LARA WHITELY BINDER

King County Climate Preparedness Program Manager
Puget Sound Climate Preparedness co-chair
lwbinder@kingcounty.gov | 206.263.0825

