



**LYNNWOOD**  
WASHINGTON

*A great deal more*

## Regional Access: Lynnwood City Center

Presented to:

Puget Sound Regional Council  
February 21, 2020

# City of Lynnwood

---

- 38,260 Population<sup>1</sup>
- 16 Miles to Seattle
- 20 Miles to Bellevue
- 14 Miles to Everett
- Auto Row of HWY 99
- Alderwood Mall







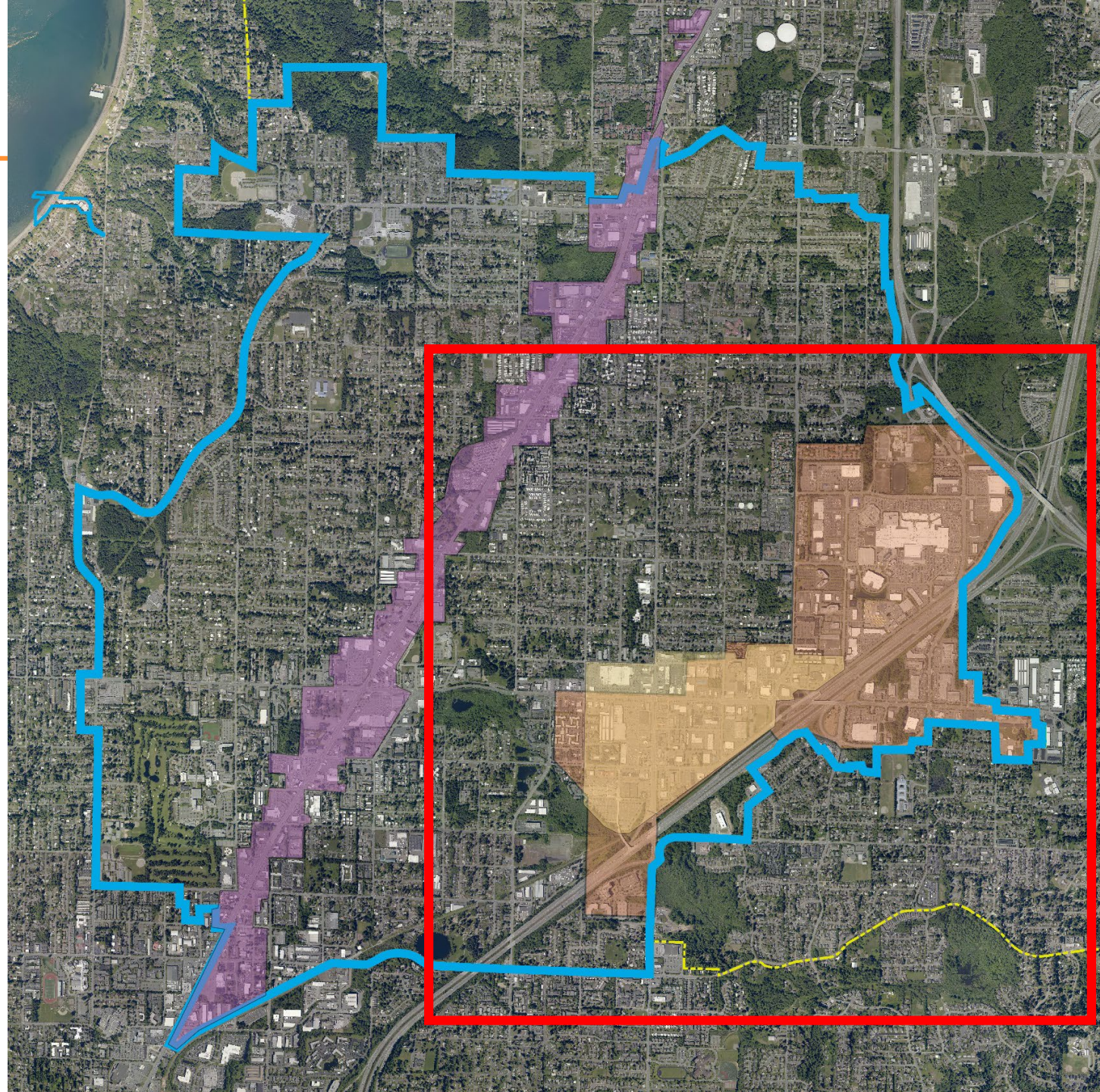
<sup>1</sup>Washington State OFM April 1 Population Estimates, 2018



# City of Lynnwood

---

-  **City of Lynnwood Boundary**
-  **Regional Growth Center**
-  **City Center**
-  **Highway 99 Revitalization Area**



# City of Lynnwood

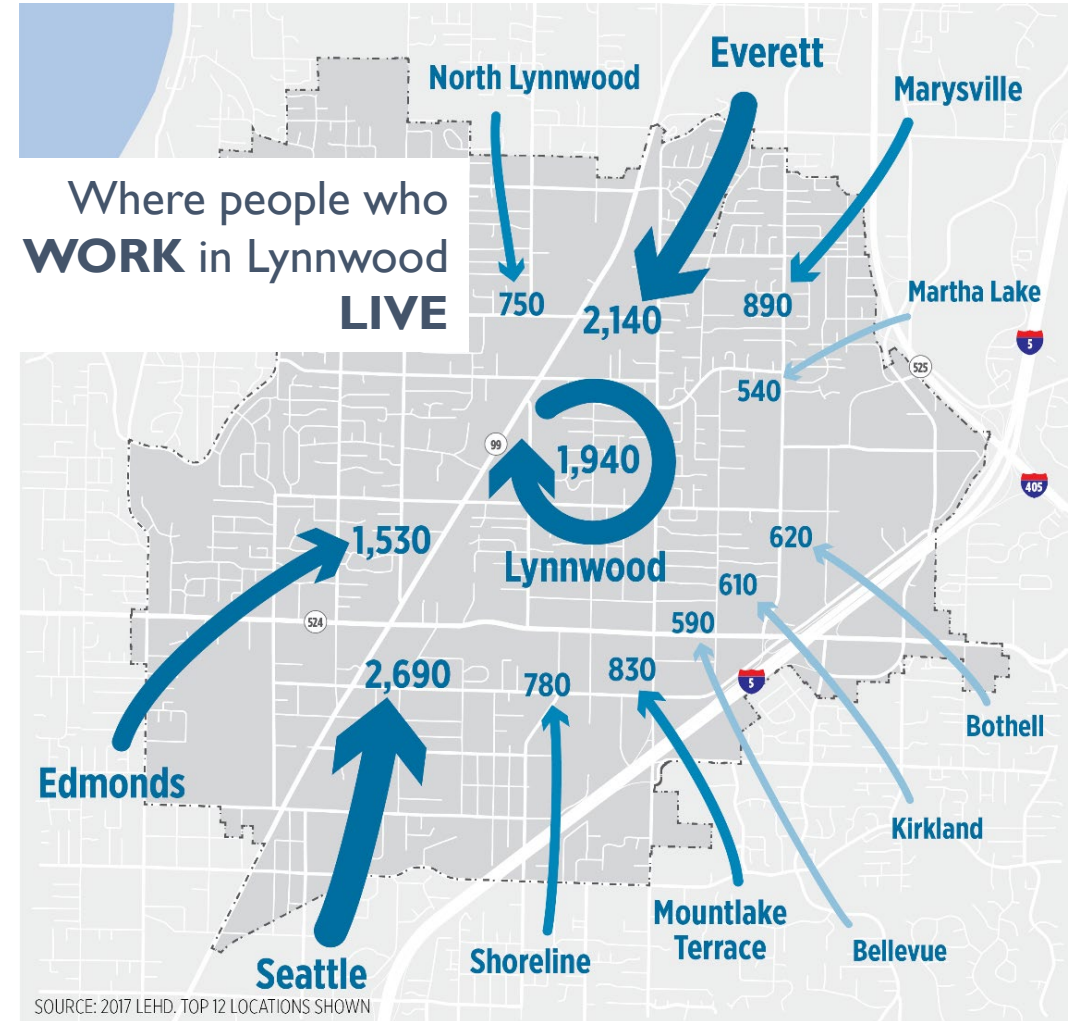
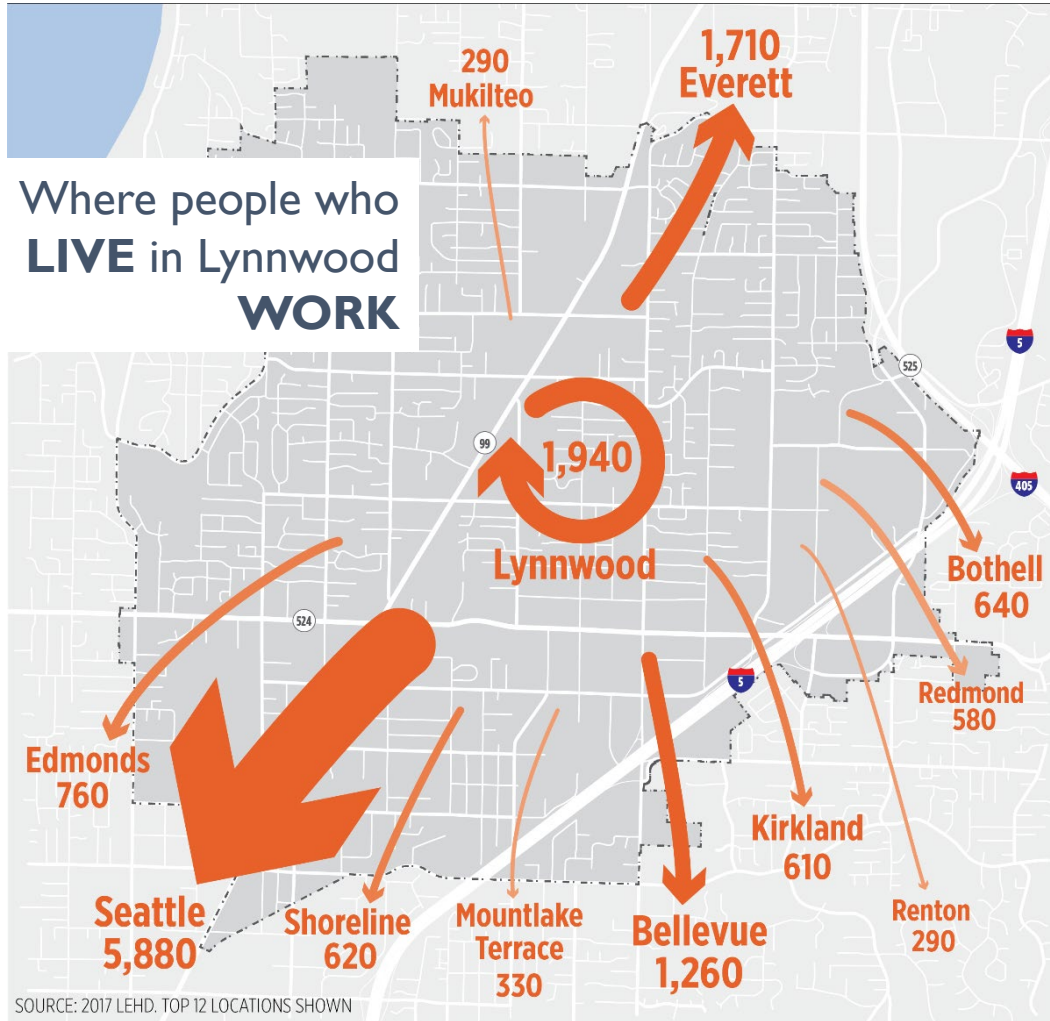
---

- 14,088 Households
- 43% Renter vs. 51% Owner
- Households Earning Less than 50% AMI – 38%
- Median Household Income - \$58,852
- 2019 1-Bedroom Rental List Price (Zillow) - \$2,330
- 2019 – Median Home Sale Price (Zillow) - \$478,500

<sup>2</sup>Washington State Office of Financial Management, 2019; Alliance for Housing Affordability Website Dashboard: Lynnwood; 30% AMI percentages are derived from U.S. Census American Community Survey 2013-2017 (Tables DP04 and S1901 for Lynnwood); HUD FY2019 Small Area FMR; Zillow Home Values ([www.zillow.com/lynnwood-wa/home-values/](http://www.zillow.com/lynnwood-wa/home-values/)).



# WHAT ARE REGIONAL COMMUTE TRENDS?



# Future Lynnwood



# Future Transit Services

---

- 2024 Lynnwood Link Extension
- 2024 I-405 BRT – STRIDE
- 2024 Community Transit Orange Line BRT
- 2036 Everett Link Extension



# Northline Village

---

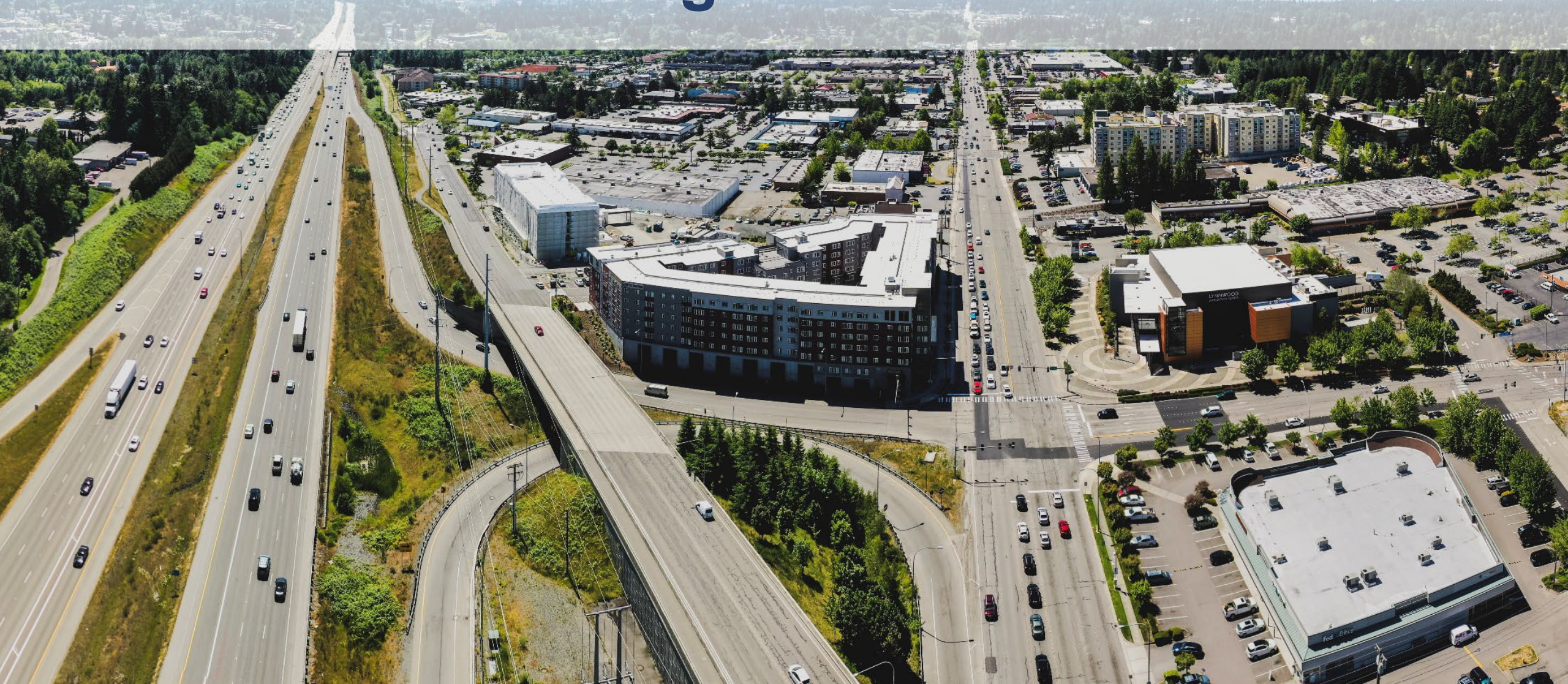




# Northline Village



# Planning & Investment



# Planning

---

- Lynnwood City Center Sub-Area Planning
- EIS & Planned Action Ordinance
- Street Master Planning & Streetscape
- Park & Trail Planning
- Design Standards
- Opportunity Zone & MFTE



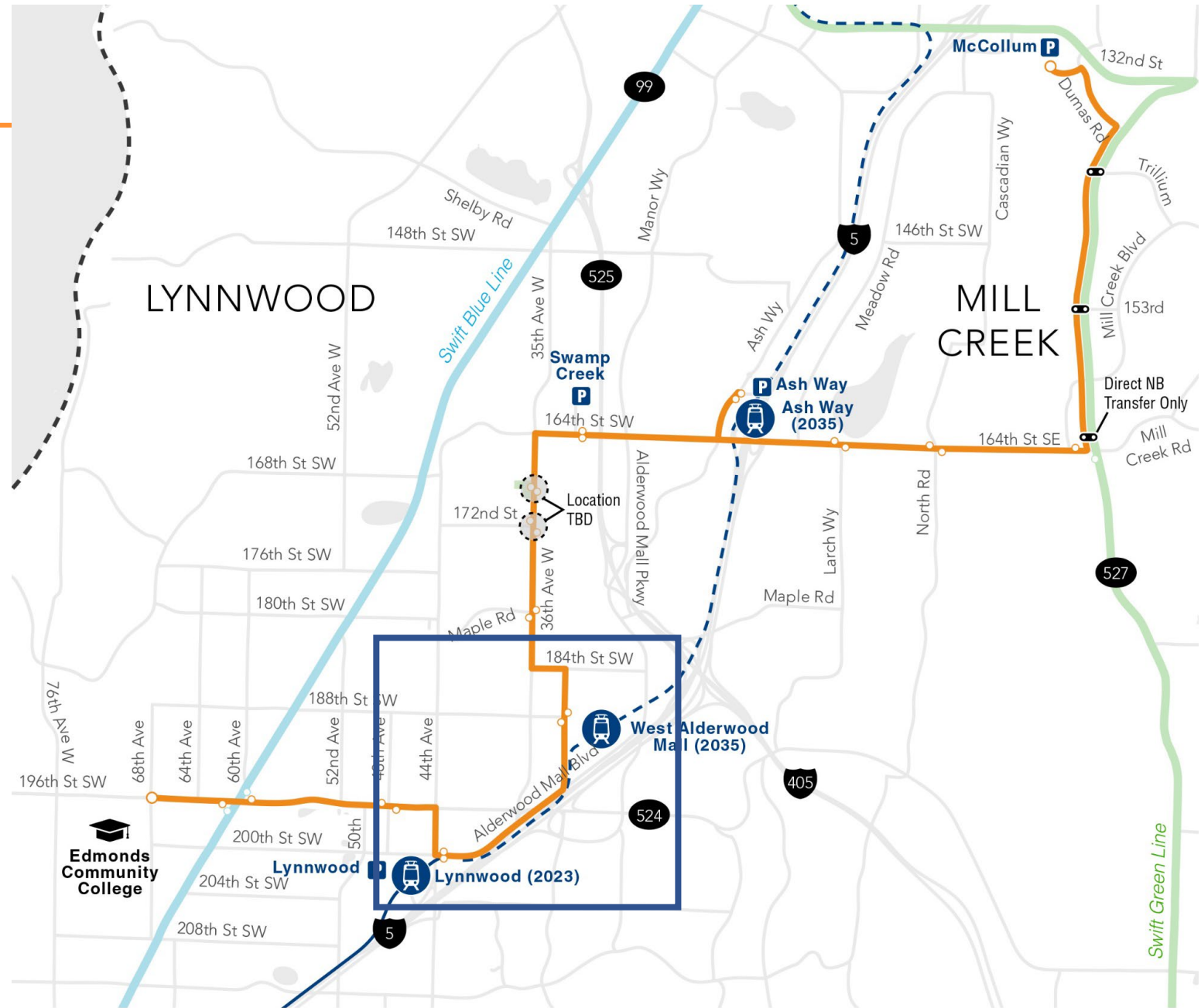
# Multi-Modal Connectivity

- Connect Lynnwood
- Bike2Health project completed 11 missing links in regional bicycle network
- Lynnwood Transit Center Accessibility Improvements
- Scriber Lake Trail Redevelopment



# Orange Line

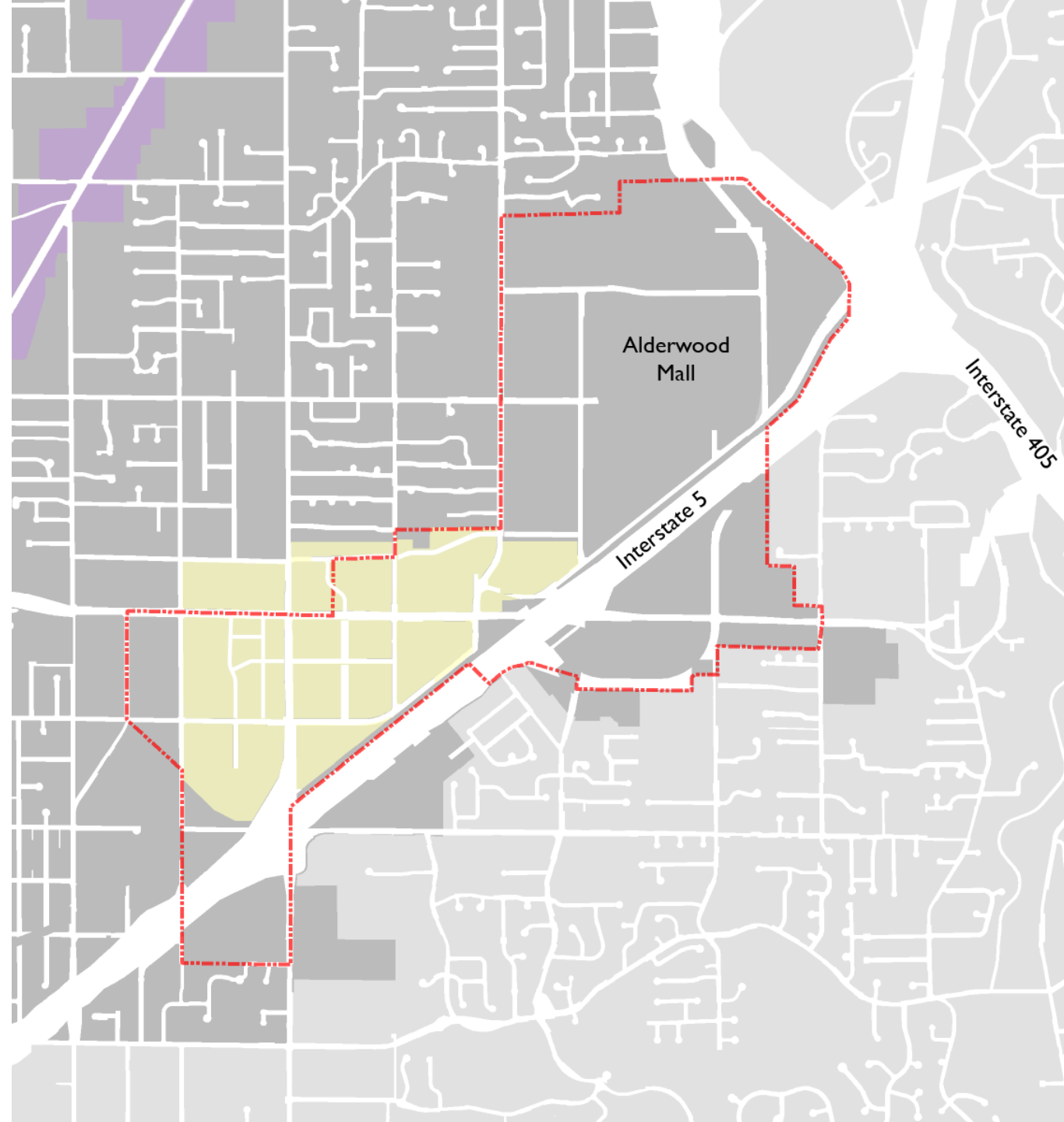
- Third BRT Line for Community Transit
- Edmonds Community College to McCollum Park



# Investment

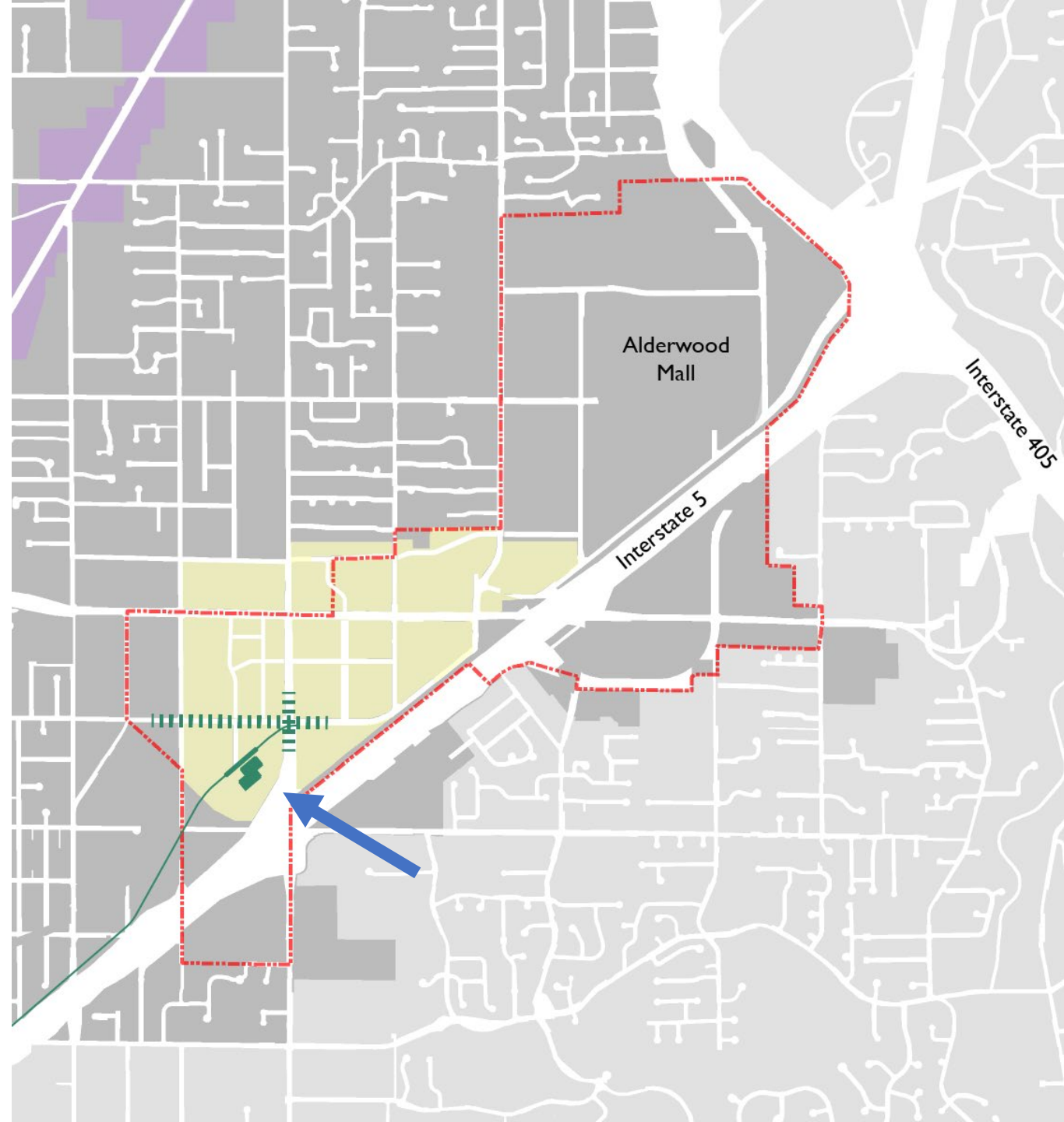
---

- Sound Transit Enhancements
- 196<sup>th</sup> Street SW Widening
- 42<sup>nd</sup> Avenue (New Road)
- Poplar Way Bridge
- Scriber Creek Trail
- Community Justice Center



# Investment

- Sound Transit Enhancements
  - Station & Garage
  - 500+ Parking
  - Pedestrian Scale Amenities
  - 200<sup>th</sup> Street Widening
  - 44<sup>th</sup> Avenue Widening



# Investment

---

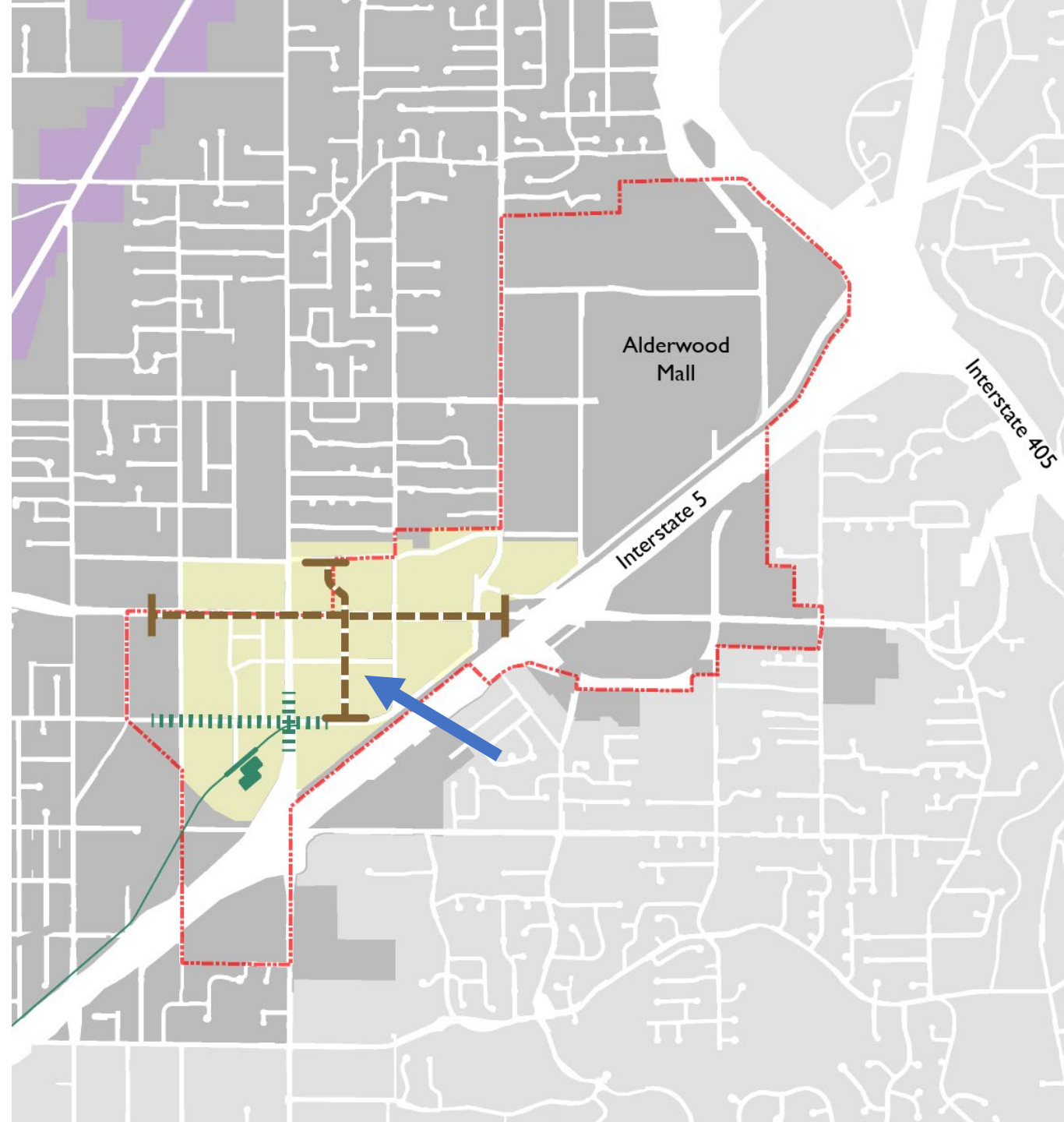
- 196<sup>th</sup> Street SW Widening
  - Adding BAT Lanes
  - Improved Pedestrian Facilities





# Investment

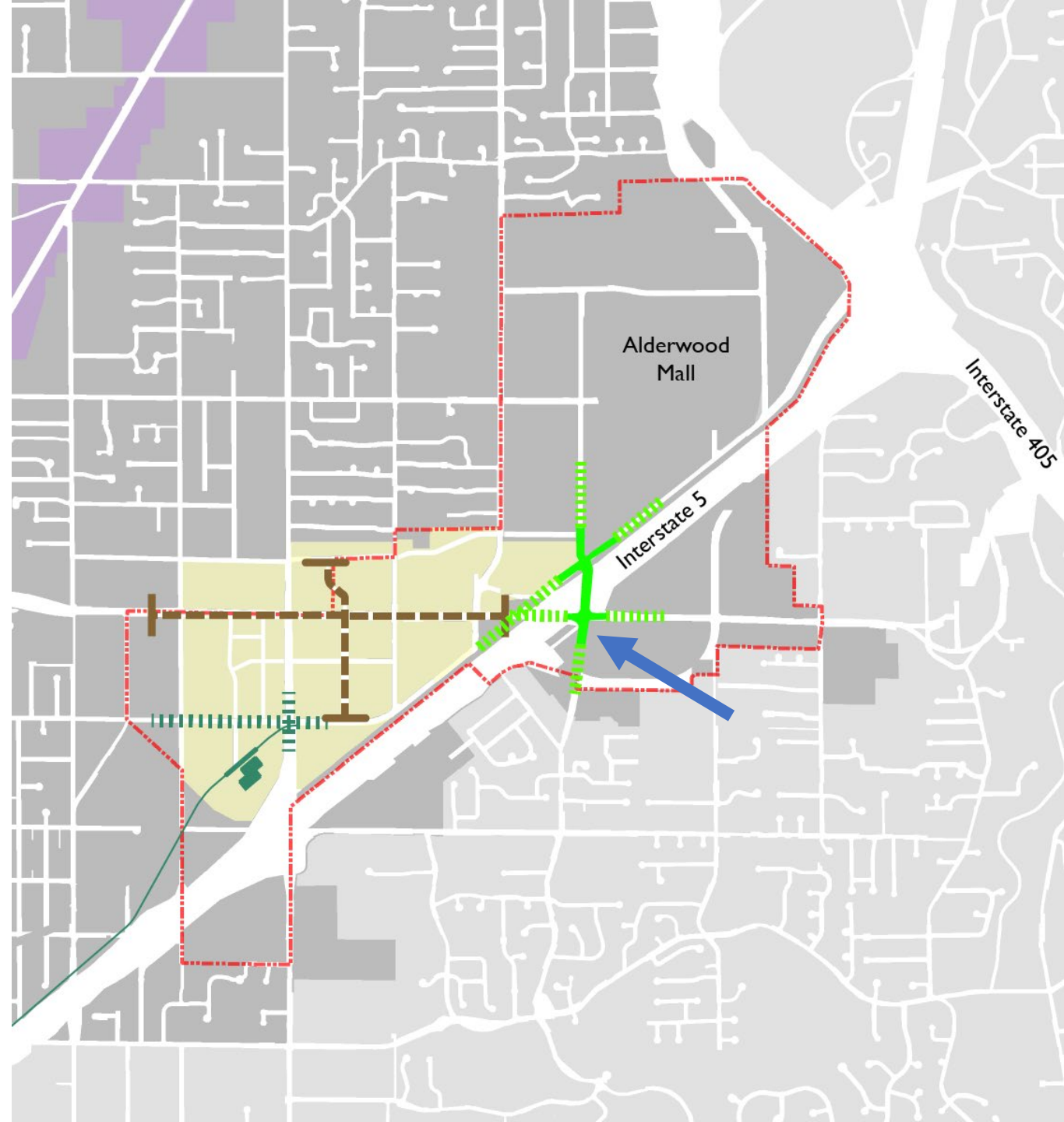
- 42<sup>nd</sup> Avenue West
  - New Grid Street
  - On-Street Parking
  - Pedestrian Scale



# Investment

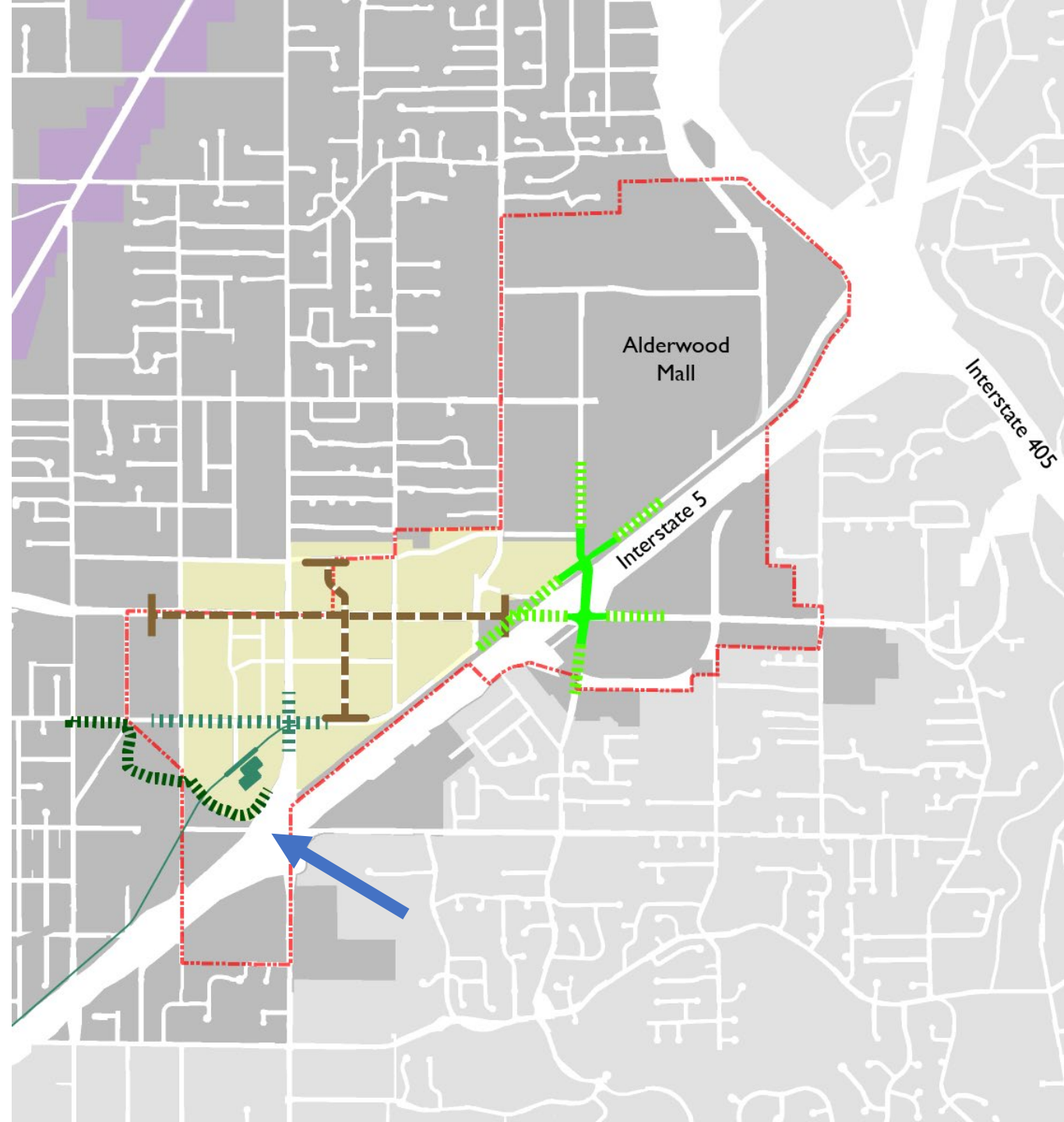
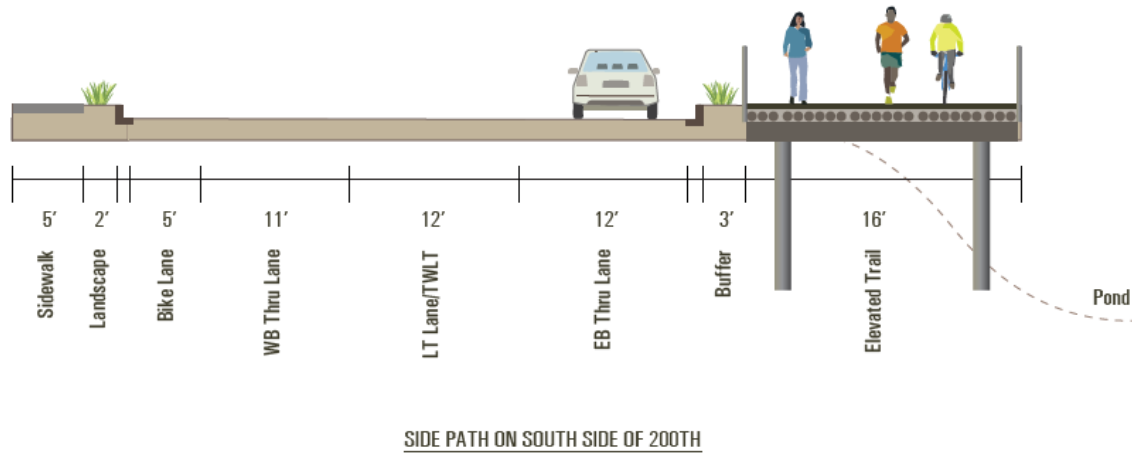
---

- Poplar Way Bridge
  - Grid Pattern
  - Traffic Relief
  - Regional Growth Connectivity



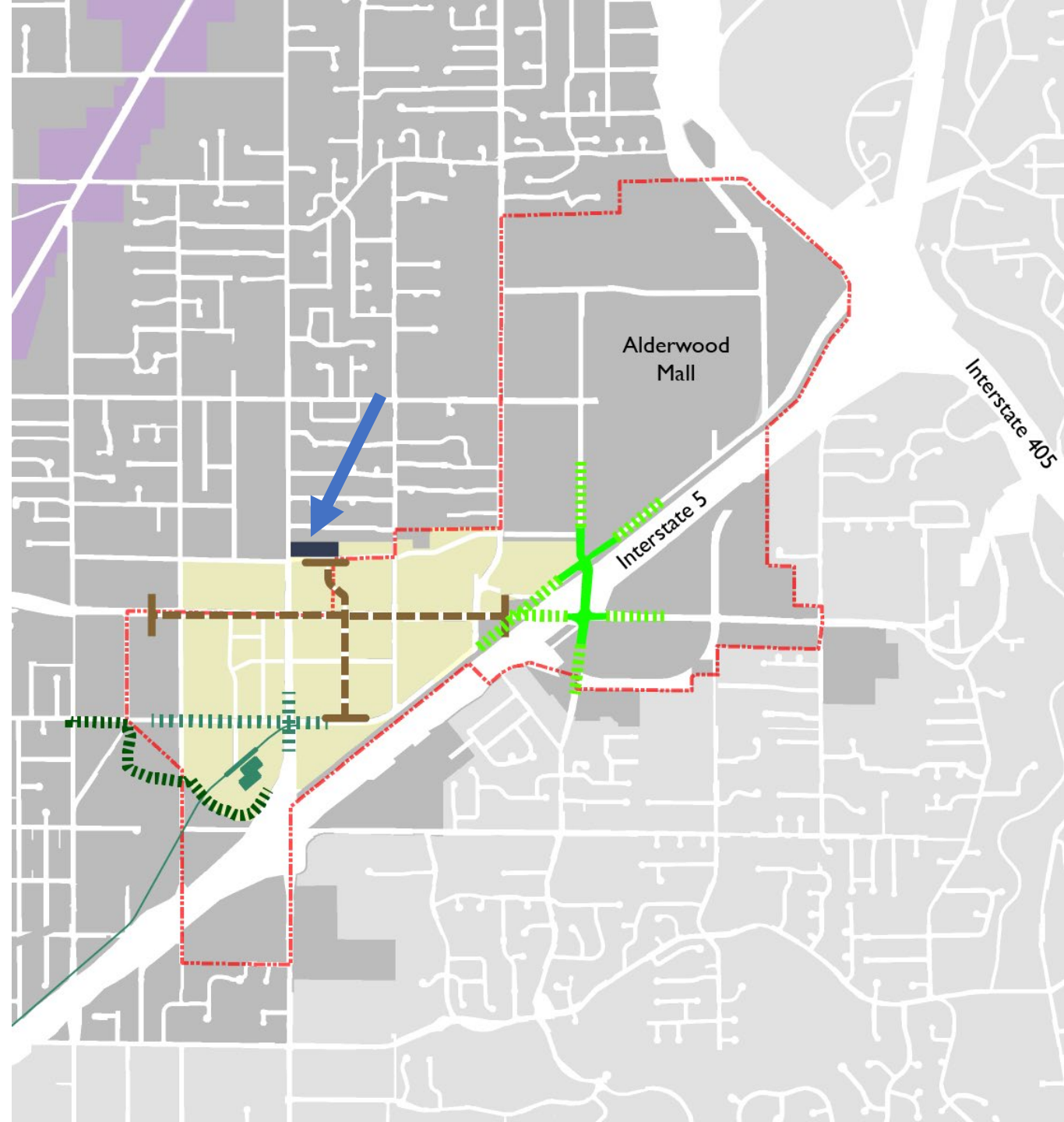
# Investment

- Scriber Creek Trail
  - Pedestrian Access
  - Access & Recreation



# Investment

- Community Justice Center
  - Renovate Courthouse
  - New Police Station
  - Jail Service w/ Human Services





# Private Development



# Private Projects – City Center

---

- Northline Village
- Kinect @ Lynnwood
- CityCenter Apartments
- Lynnwood Senior Apartments
- Hilton Garden Inn



# Private Projects – Regional Growth Center

---

- Avalon Mixed Use
- Alderwood Mixed Use
- Lynnwood Place
- Alderwood South



# Lynnwood – What's Next?







# Thank you!

Karl Almgren  
City Center Program Manager  
City of Lynnwood

kalmgren@LynnwoodWA.gov  
425-670-5041

[www.LynnwoodWA.gov/EconDev](http://www.LynnwoodWA.gov/EconDev)