

# Draft Regional Transportation Plan

Transportation Operators Committee: January 26, 2022



Puget Sound Regional Council

# Transportation Planning Activities

Topics covered in today's presentation:

- **Regional Transportation Plan**
  - *Overview and work to date*
  - *Outreach activities and what we have heard*
  - *Highlights of plan performance*
  - *Public Comment period and next steps*



# Regional Transportation Plan

2022-2050

**REGIONAL TRANSPORTATION PLAN**

## VISION 2050 Implementation



# Regional Transportation Plan

2022–2050

**REGIONALTRANSPORTATIONPLAN**

- Builds from VISION 2050
- Objectives:
  - Make progress on existing challenges, address current and future needs of the transportation system
    - Provide better data and analysis to support local investment planning (2024 comprehensive plans)
  - Plan for long-term system investments to accommodate future growth
    - Improve existing system, big picture thinking on future investments (aviation, rail, ferries)



# Key Policy Focus Areas

Building from VISION 2050, board identified key policy areas:

- Access to transit
- Safety
- Equity
- Climate
- Local agency needs
- Forward thinking/future investments



# Key Planning Work – System Needs and Opportunities

PSRC's Transportation System Conditions Visualization Tool

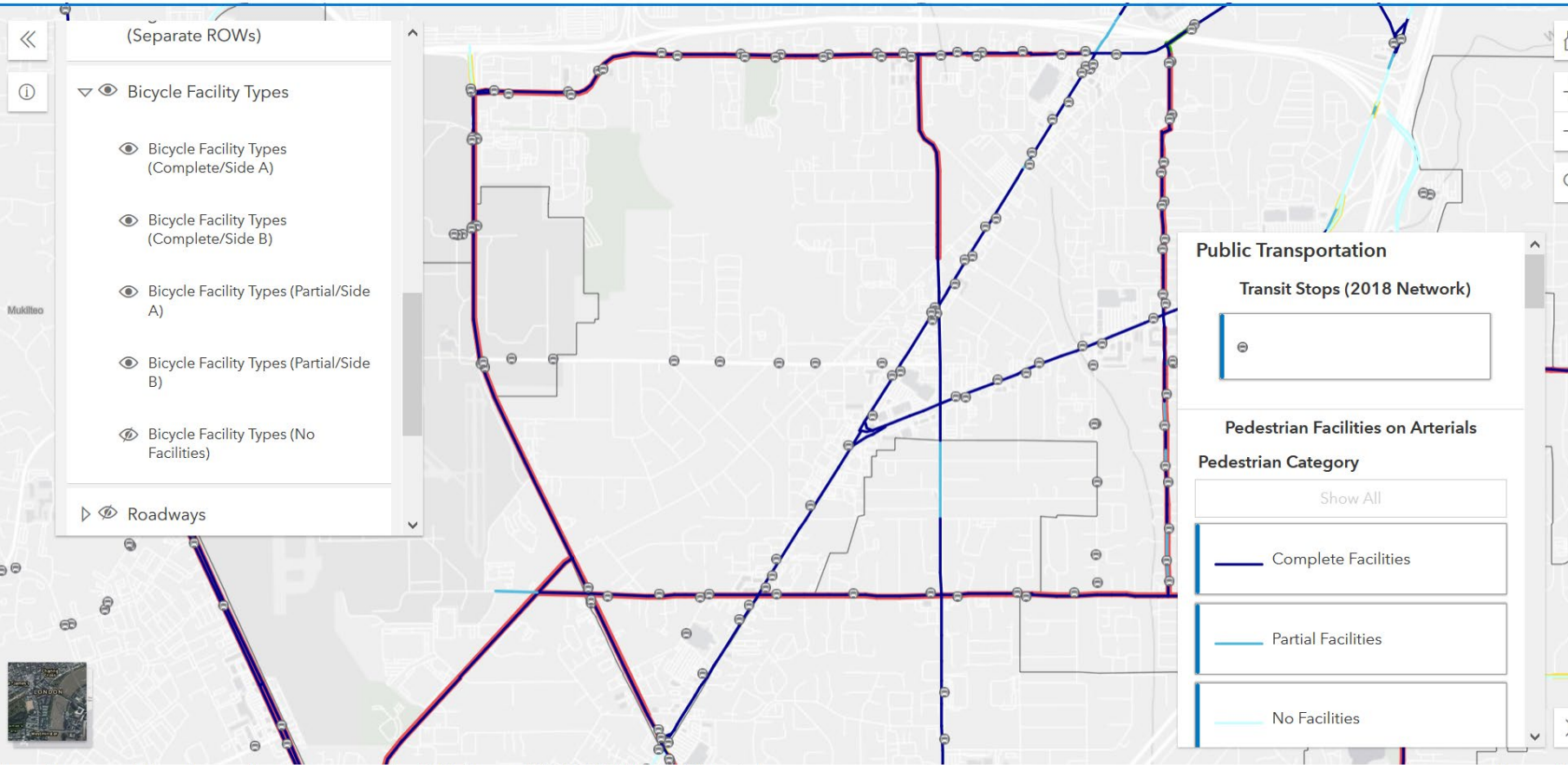


2022–2050

**REGIONAL TRANSPORTATION PLAN**

Full System (All Layers)

Full System (All Layers)



<https://www.psrc.org/our-work/regional-planning/regional-transportation-plan/rtp-data-research>



# What Have We Heard?



Online Engagement Platform



Virtual Outreach Meetings



Personal Interviews



Social Media



Survey

**Puget Sound Regional Council**  
on Thursday

We want to hear from you! Take a survey to help plan the future of transportation in Puget Sound: <https://engage.psrc.org/regional-transportation-plan>

**HOW WILL YOU GET AROUND?**

ENGAGE.PSRC.ORG  
**Regional Transportation Plan**  
PSRC is developing the next Regional Transportation Plan, which will des...

# What Have We Heard?

2022–2050

REGIONAL TRANSPORTATION PLAN

## Top five priorities:

- Reliable, well-maintained roads and highways
- Reliable, well-connected transit service for local neighborhoods
- Expanded transit to major destinations
- Complete bike/ped facilities
- High speed rail

## Top three motivators to use transit more:

- Shorter trip times
- Easier to access
- Extended service

## Top six mobility needs for people with special transportation needs:

- Shorter travel times when taking regular transit or specialized transportation
- More transportation services at times when they are needed
- Accessible information about available services and language services
- Better access to health and wellness destinations
- Affordable transportation services
- More connected ADA-accessible infrastructure (i.e., curb ramps)





# Continued Outreach

- Continued outreach on Coordinated Mobility Plan
- Targeted focus groups
  - Business community
  - Underrepresented communities
- Outreach to countywide organizations, others
- Draft plan public comment period, including an online open house
- Board review of public comments



# What's in the Plan?

- \$300 billion of investment over the next 28 years
  - 56% will maintain, preserve and operate the system
  - 70% of the plan's system improvements are for investments in local and regional transit
  - 84% of the plan funded with forecast current law revenues



**36**

Bus Rapid Transit routes



**10**

Passenger-only Ferry routes

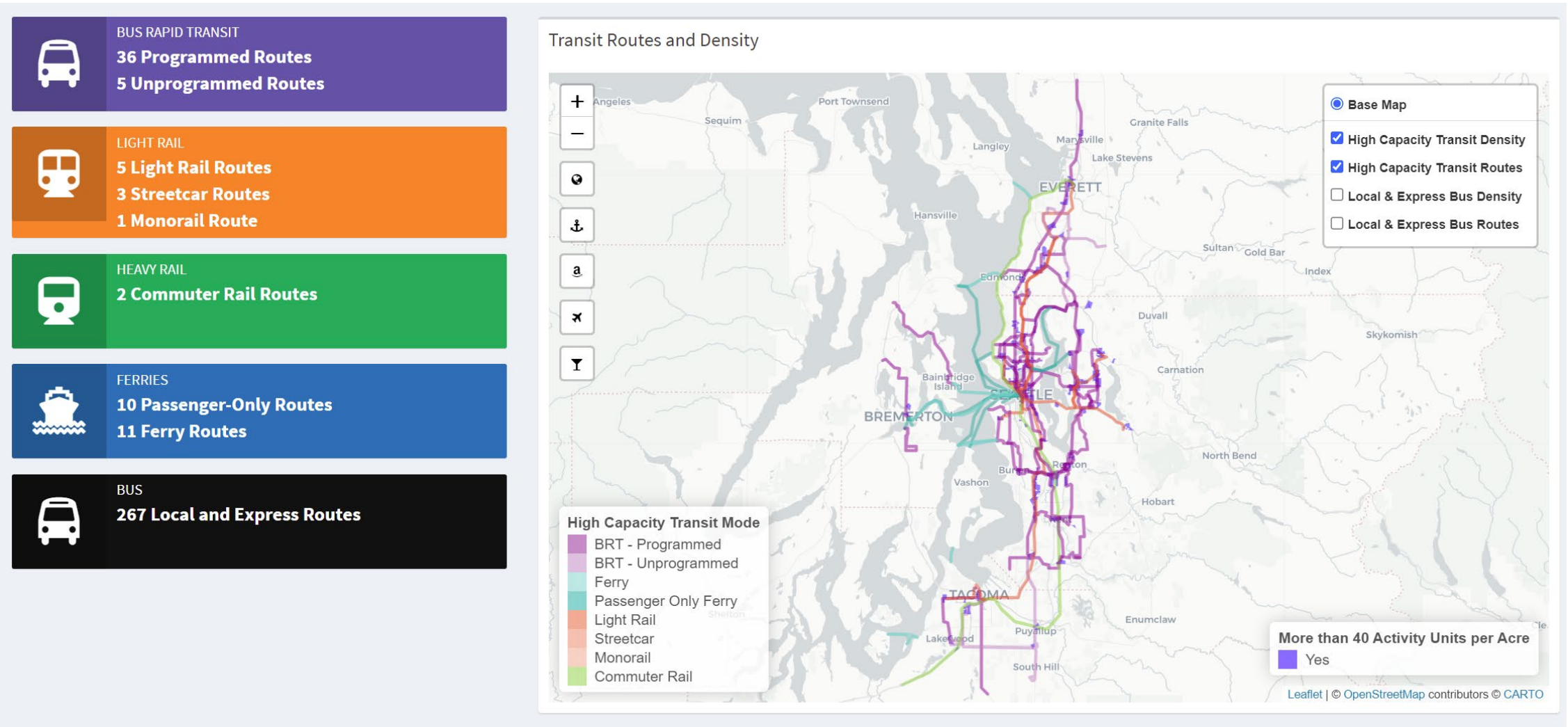


**116**

Miles of light rail and 80+ stations



# 2050 Regional Transit Network



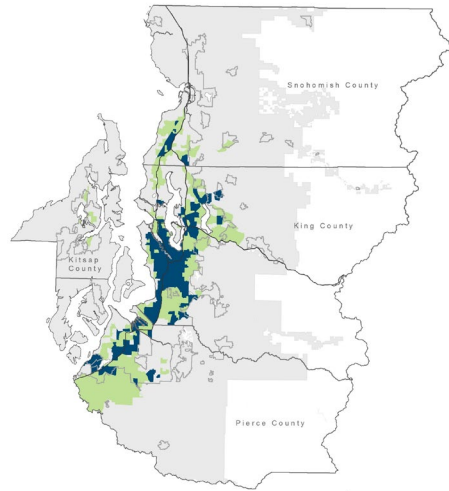
# Key Performance Measures

Centered on race and equity, the levels of geography that are analyzed =

- County
- Regional Growth Center
- Regional Geography
- Equity Focus Areas
  - Above 50% / Above Regional Average People of Color
  - Above 50% / Above Regional Average People with Low Incomes
  - Above Regional Average Youth (age 5-17)
  - Above Regional Average Older Adults (aged 65+)
  - Above Regional Average People with Limited English Proficiency
  - Above Regional Average People with Disabilities



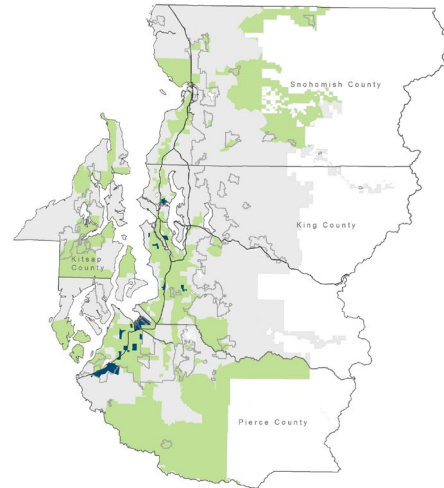
# Equity Focus Areas



**People of Color**

**People of Color**  
Regional Average: 35.9%

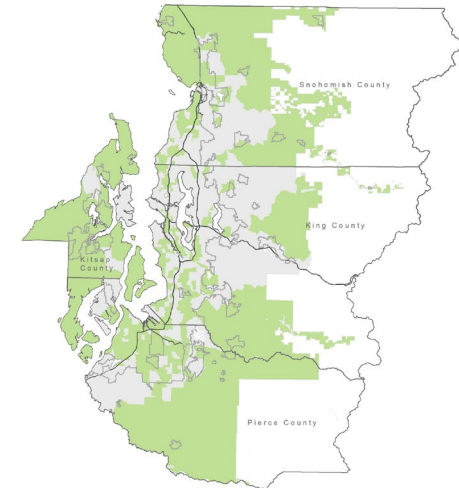
- Above 50% Threshold
- Above Regional Average
- Below Thresholds
- Urban Growth Area
- Forest Lands



**People with Low Incomes**

**People with Low Incomes**  
Regional Average: 20.7%

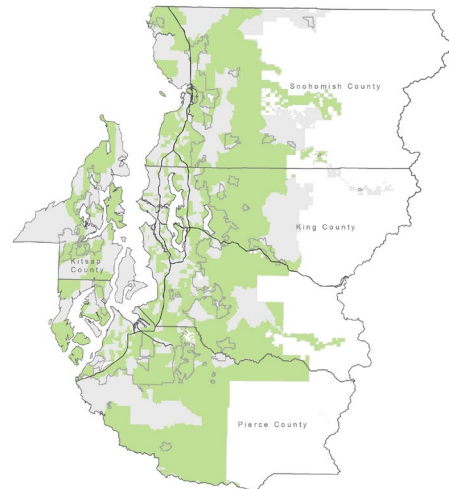
- Above 50% Threshold
- Above Regional Average
- Below Thresholds
- Urban Growth Area
- Forest Lands



**People with Disabilities**

**People with Disabilities**  
Regional Average: 11.0%

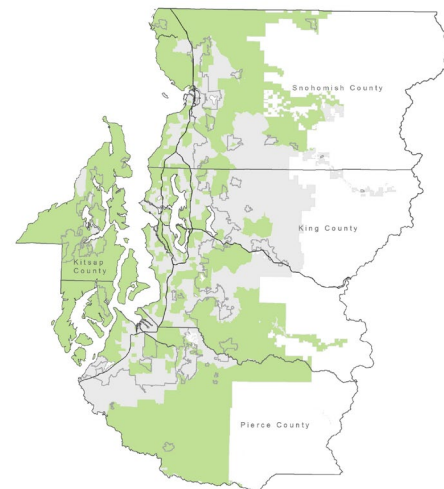
- Above Regional Average
- Below Regional Average
- Urban Growth Area
- Forest Lands



**Youth (Ages 5-17)**

**Youth (Ages 5-17)**  
Regional Average: 15.4%

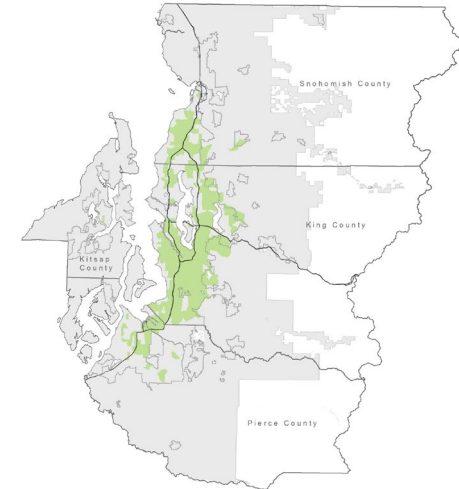
- Above Regional Average
- Below Threshold
- Urban Growth Area
- Forest Lands



**Older Adults (Aged 65+)**

**Older Adults (Age 65+)**  
Regional Average: 13.4%

- Above Regional Average
- Below Threshold
- Urban Growth Area
- Forest Lands



**People with Limited English Proficiency**

**People with LEP**  
Regional Average: 8.5%

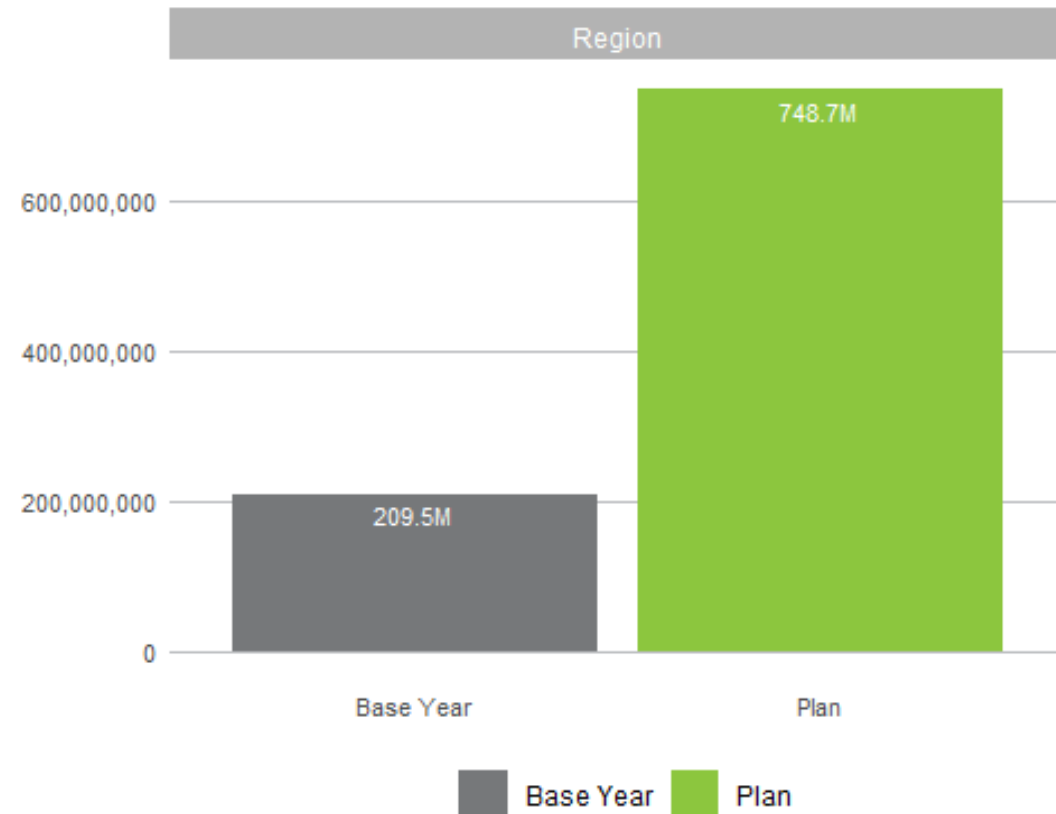
- Above Regional Average
- Below Threshold
- Urban Growth Area
- Forest Lands



# Key Highlights: What will the Plan Deliver?

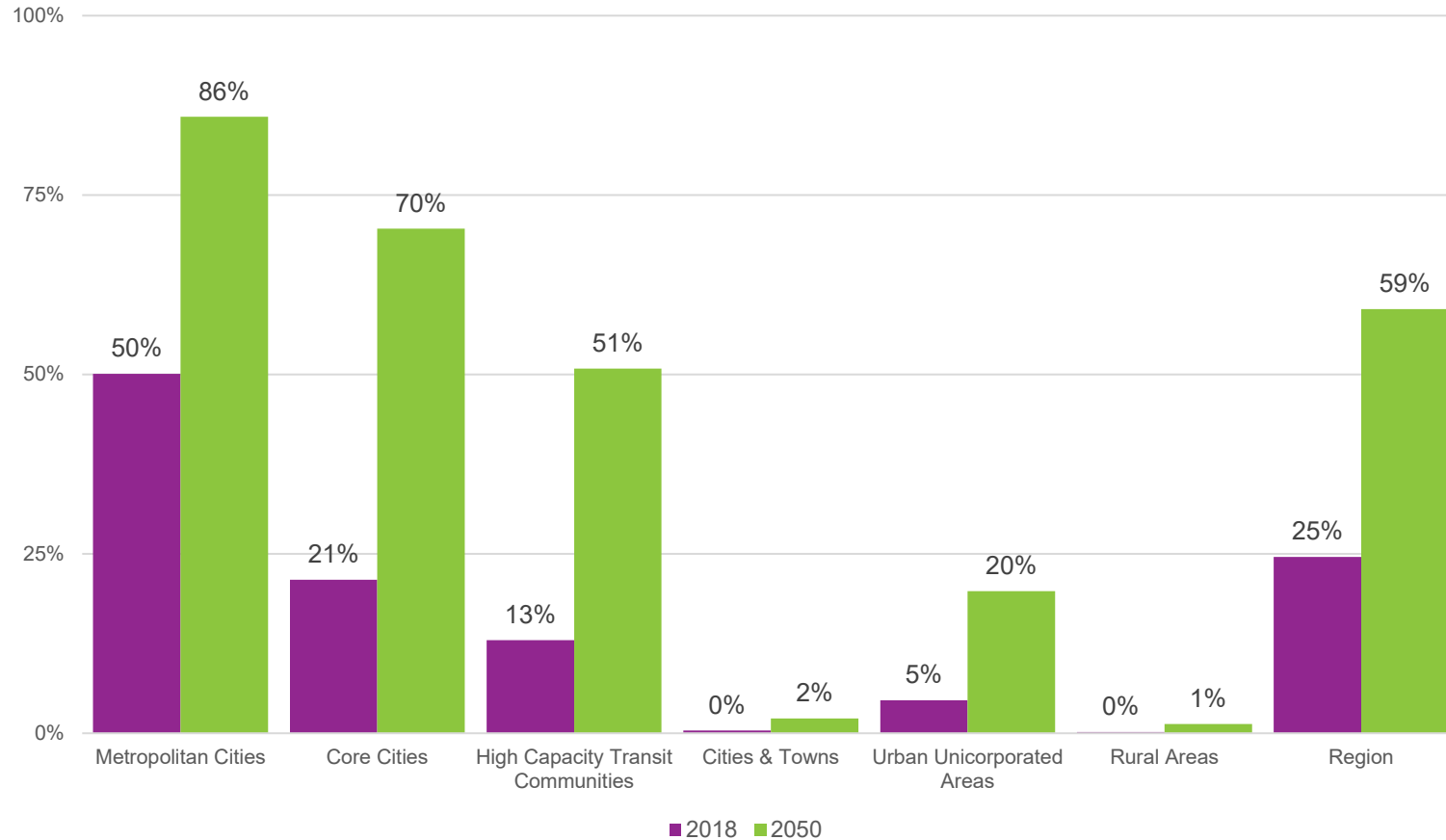
Transit boardings are forecasted to **more than triple** by 2050 with expansion of High-Capacity Transit investments in rail, bus rapid transit and passenger only ferries

## 2022-2050 REGIONAL TRANSPORTATION PLAN



# Key Highlights: What will the Plan Deliver?

2022-2050  
**REGIONAL TRANSPORTATION PLAN**

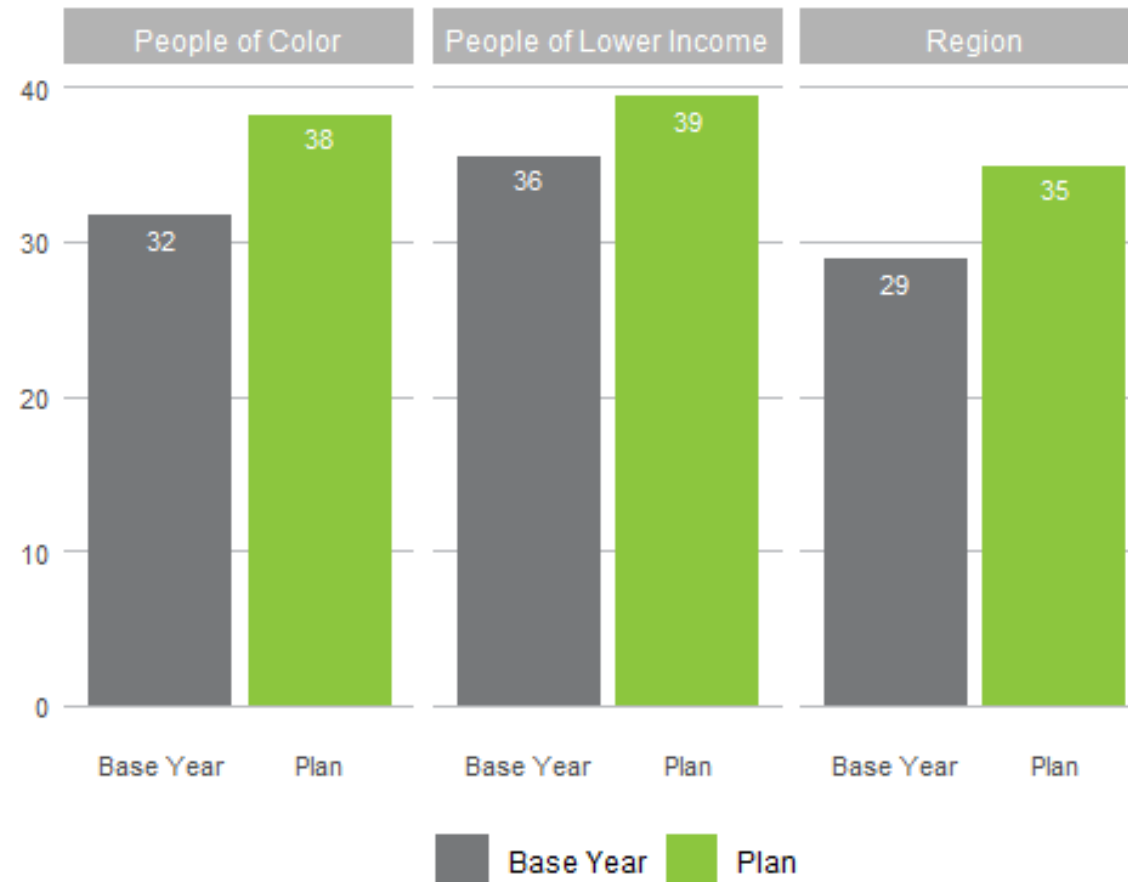


By 2050, **59%** of households will live within a 1/2 mile of high-capacity transit service



# Key Highlights: What will the Plan Deliver?

By 2050, the average person will **walk or bike 21% more** than today

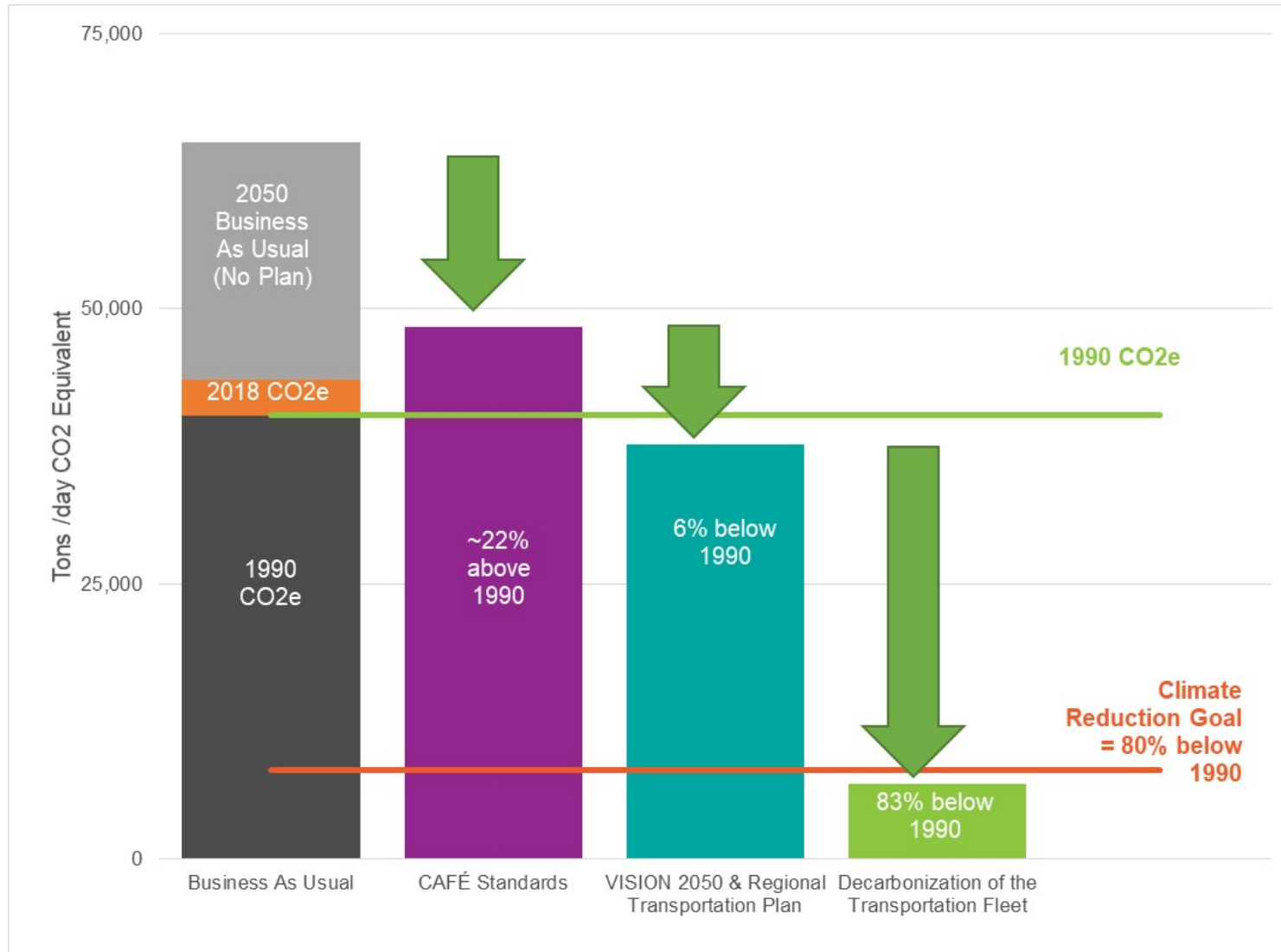




# Key Highlights: What will the Plan Deliver?

## Steps to Meeting Regional Climate Goals

2022-2050  
**REGIONAL TRANSPORTATION PLAN**



Reflecting:

- VISION 2050
- RTP investments
- Fuel economy improvements
- Transition to zero emission transportation system



# Schedule and Next Steps



***Public comment period January 13 through February 28, 2022***



# Thank You!

## How to comment on the draft plan:

- Visit online open house
- Use comment form
- Email: [transportation@psrc.org](mailto:transportation@psrc.org)
- US Mail: 1011 Western Ave #500,  
Seattle, WA 98104

