

Regional Transportation Plan



Transportation Planning Activities

Topics covered in today's presentation:

- **Regional Transportation Plan**
 - *Overview and work to date*
 - *Outreach activities and what we've heard*
 - *Highlights of plan performance*
 - *Public Comment period and next steps*



Regional Transportation Plan

2022-2050

REGIONAL TRANSPORTATION PLAN

VISION 2050 Implementation



Regional Transportation Plan

2022–2050

REGIONALTRANSPORTATIONPLAN

- Builds from VISION 2050
- Objectives:
 - Make progress on existing challenges, address current and future needs of the transportation system
 - Provide better data and analysis to support local investment planning (2024 comprehensive plans)
 - Plan for long-term system investments to accommodate future growth
 - Improve existing system, big picture thinking on future investments (aviation, rail, ferries)



Key Policy Focus Areas

Building from VISION 2050, board identified key policy areas:

- Access to transit
- Safety
- Equity
- Climate
- Local agency needs
- Forward thinking/future investments



Key Planning Work – System Needs and Opportunities

PSRC's Transportation System Conditions Visualization Tool

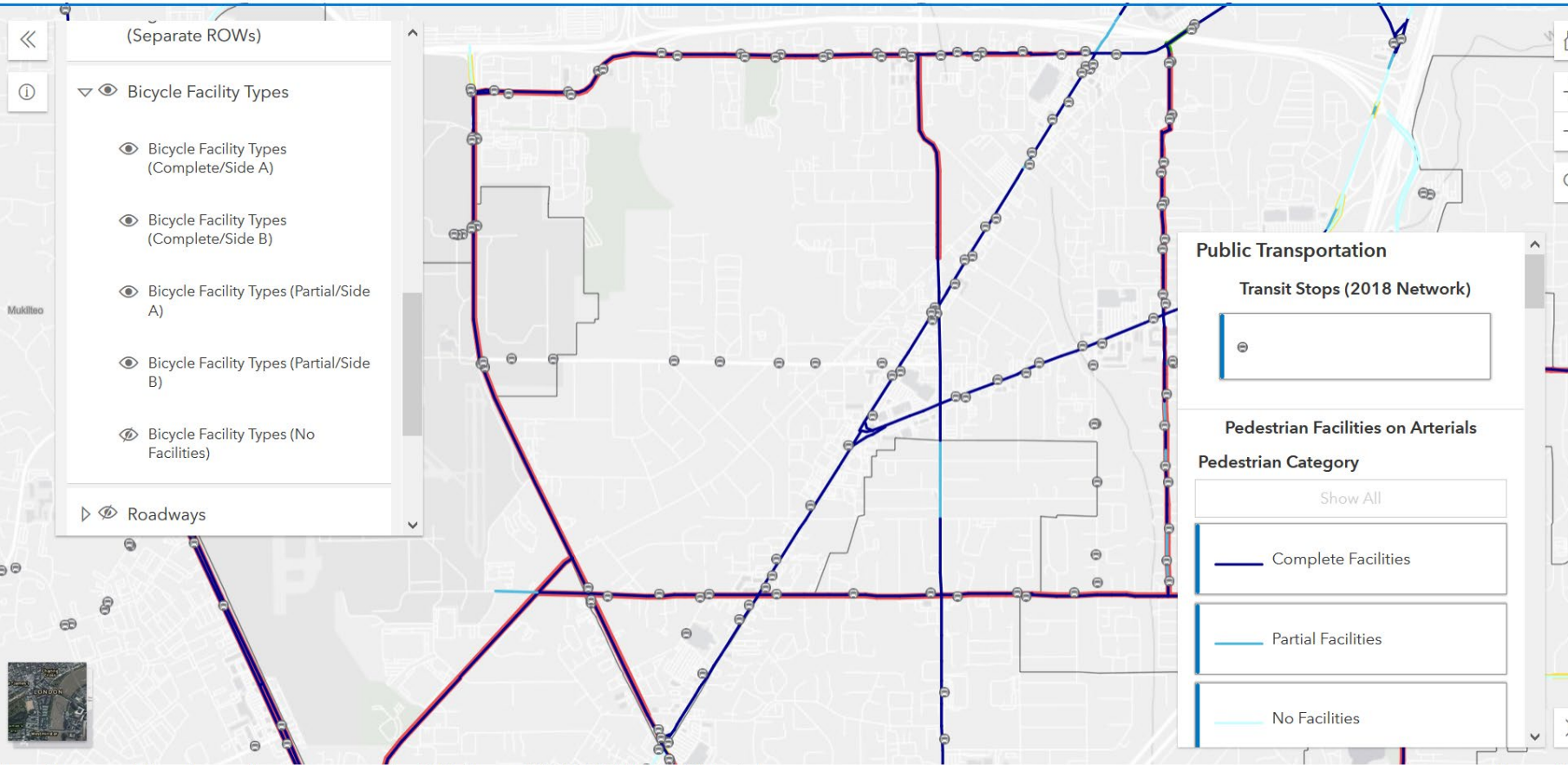


2022–2050

REGIONAL TRANSPORTATION PLAN

Full System (All Layers)

Full System (All Layers)



<https://www.psrc.org/our-work/regional-planning/regional-transportation-plan/rtp-data-research>



What Have We Heard?



Online Engagement Platform



Virtual Outreach Meetings



Personal Interviews



Social Media



Survey

Puget Sound Regional Council
on Thursday

We want to hear from you! Take a survey to help plan the future of transportation in Puget Sound: <https://engage.psrc.org/regional-transportation-plan>

HOW WILL YOU GET AROUND?

ENGAGE.PSRC.ORG
Regional Transportation Plan
PSRC is developing the next Regional Transportation Plan, which will des...

What Have We Heard?

Top five priorities:

- Reliable, well-maintained roads and highways
- Reliable, well-connected transit service for local neighborhoods
- Expanded transit to major destinations
- Complete bike/ped facilities
- High speed rail

Top three motivators to use transit more:

- Shorter trip times
- Easier to access
- Extended service



Continued Outreach

- Continued outreach on Coordinated Mobility Plan
- Targeted focus groups
 - Business community
 - Underrepresented communities
- Outreach to countywide organizations, others
- Draft plan public comment period, including an online open house
- Board review of public comments



What's in the Plan?

- \$300 billion of investment over the next 28 years
 - 56% will maintain, preserve and operate the system
 - 70% of the plan's system improvements are for investments in local and regional transit
 - 84% of the plan funded with forecast current law revenues



36

Bus Rapid Transit routes



10

Passenger-only Ferry routes



116

Miles of light rail and 80+ stations



2050 Regional Transit Network

BUS RAPID TRANSIT
 36 Programmed Routes
 5 Unprogrammed Routes

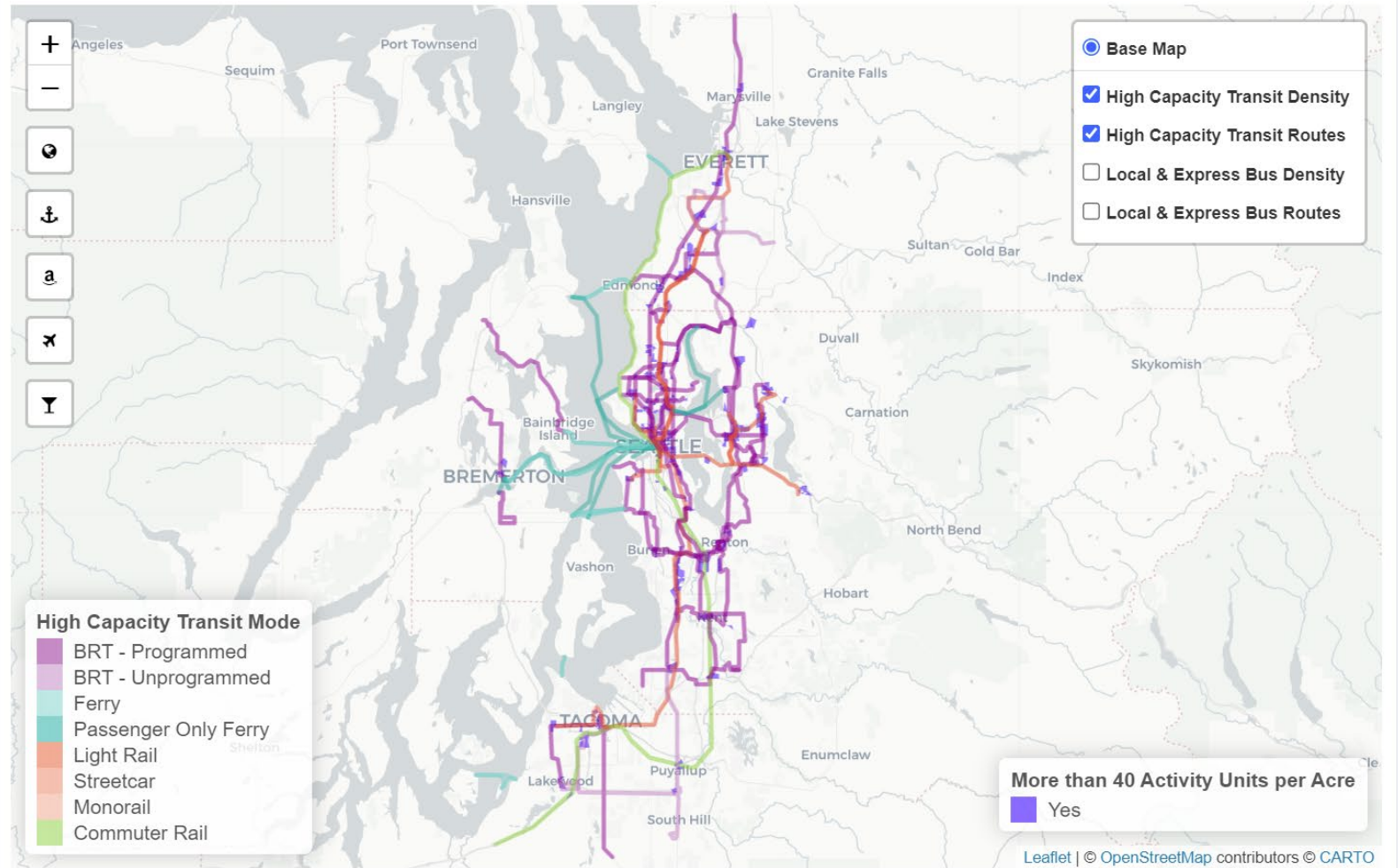
LIGHT RAIL
 5 Light Rail Routes
 3 Streetcar Routes
 1 Monorail Route

HEAVY RAIL
 2 Commuter Rail Routes

FERRIES
 10 Passenger-Only Routes
 11 Ferry Routes

BUS
 267 Local and Express Routes

Transit Routes and Density



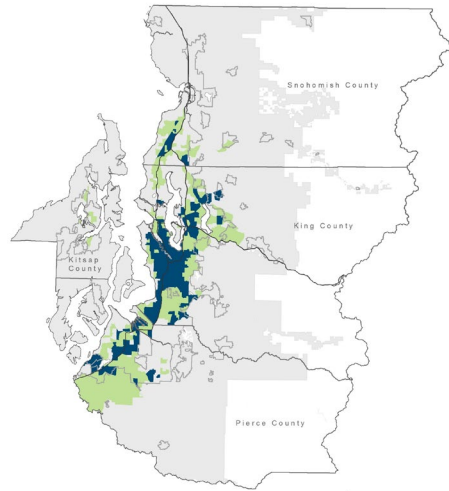
Key Performance Measures

Centered on race and equity, the levels of geography that are analyzed =

- County
- Regional Growth Center
- Regional Geography
- Equity Focus Areas
 - Above 50% / Above Regional Average People of Color
 - Above 50% / Above Regional Average People with Low Incomes
 - Above Regional Average Youth (age 5-17)
 - Above Regional Average Older Adults (aged 65+)
 - Above Regional Average People with Limited English Proficiency
 - Above Regional Average People with Disabilities



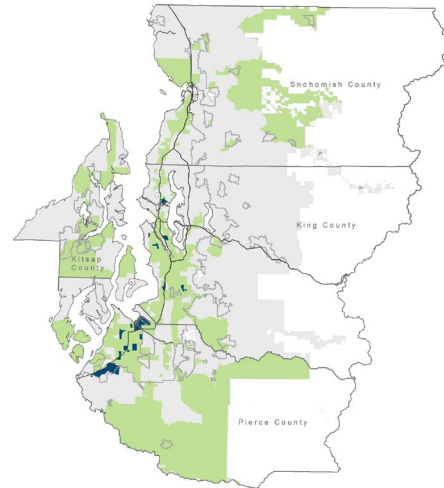
Equity Focus Areas



People of Color

People of Color
Regional Average: 35.9%

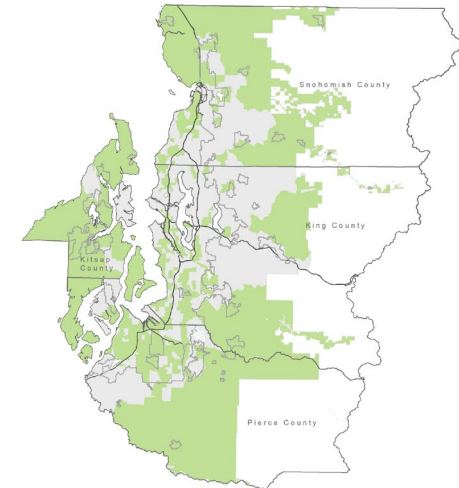
- Above 50% Threshold
- Above Regional Average
- Below Thresholds
- Urban Growth Area
- Forest Lands



People with Low Incomes

People with Low Incomes
Regional Average: 20.7%

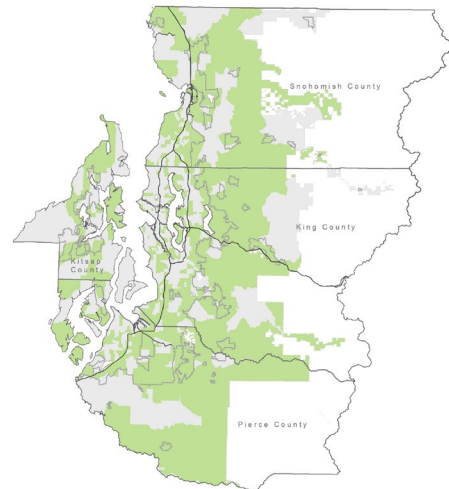
- Above 50% Threshold
- Above Regional Average
- Below Thresholds
- Urban Growth Area
- Forest Lands



People with Disabilities

People with Disabilities
Regional Average: 11.0%

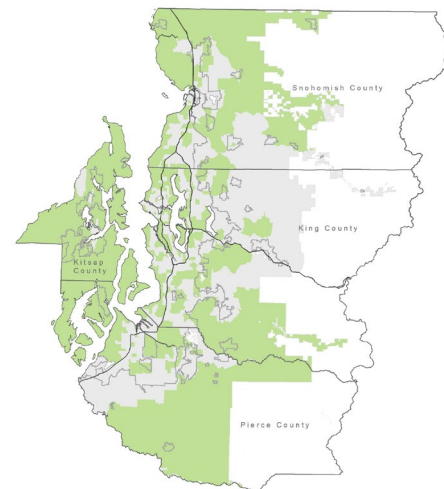
- Above Regional Average
- Below Regional Average
- Urban Growth Area
- Forest Lands



Youth (Ages 5-17)

Youth (Ages 5-17)
Regional Average: 15.4%

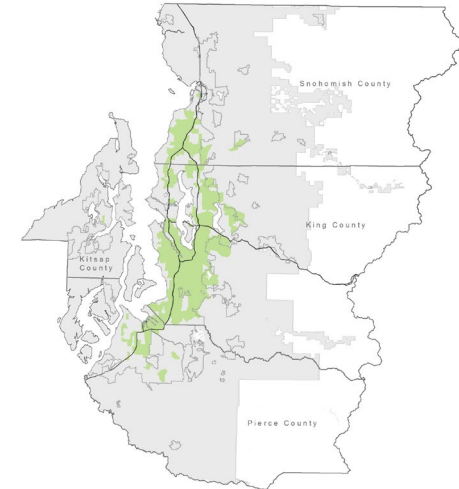
- Above Regional Average
- Below Threshold
- Urban Growth Area
- Forest Lands



Older Adults (Aged 65+)

Older Adults (Age 65+)
Regional Average: 13.4%

- Above Regional Average
- Below Threshold
- Urban Growth Area
- Forest Lands



People with Limited English Proficiency

People with LEP
Regional Average: 8.5%

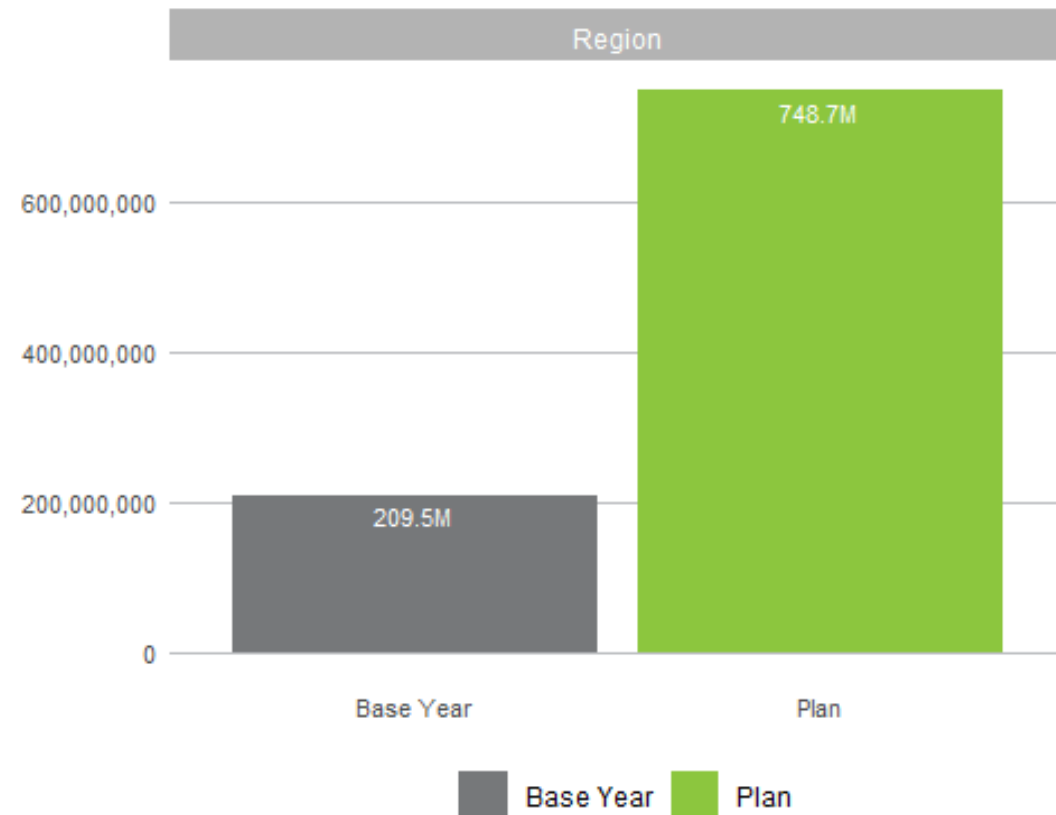
- Above Regional Average
- Below Threshold
- Urban Growth Area
- Forest Lands



Key Highlights: What will the Plan Deliver?

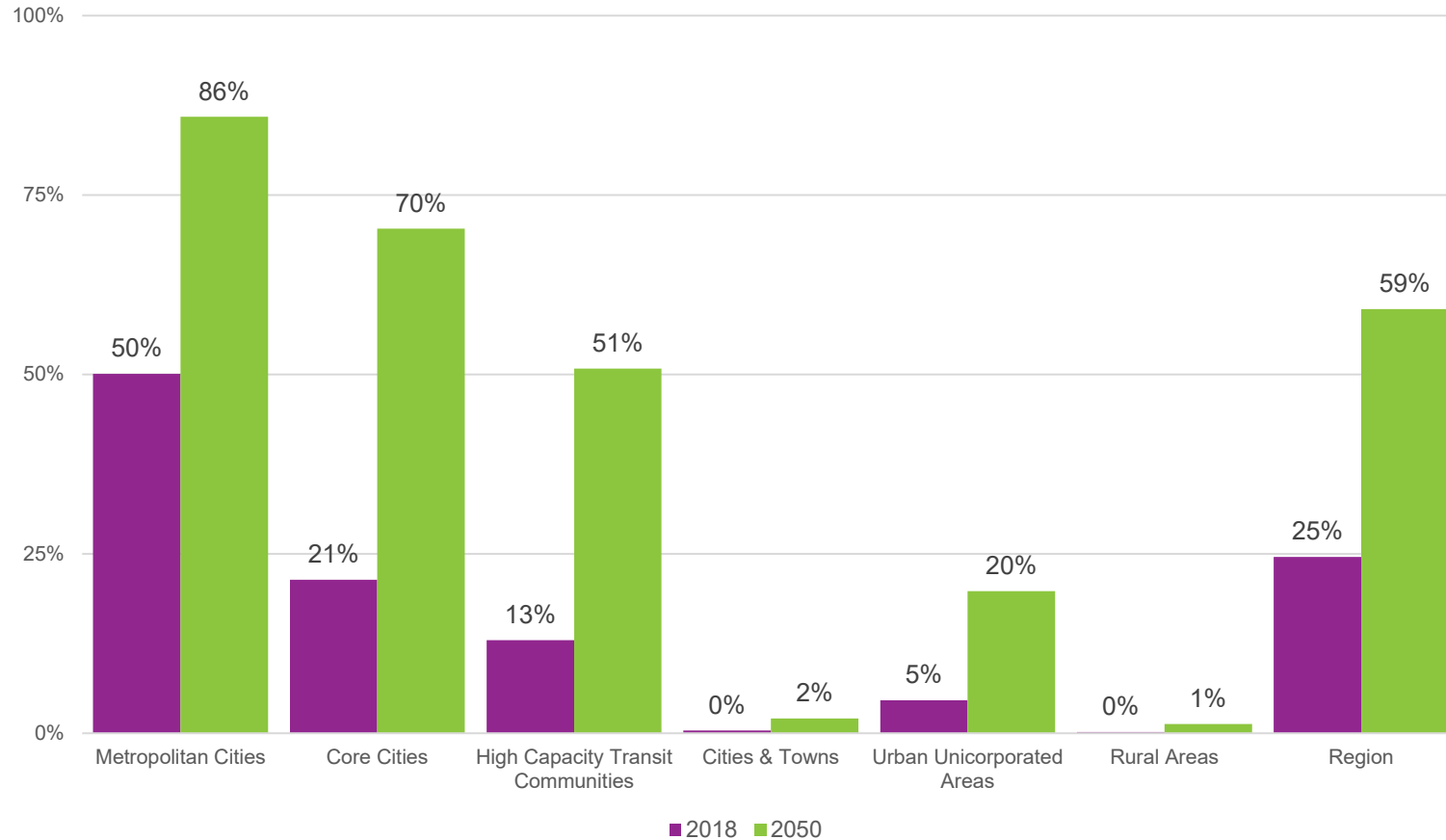
Transit boardings are forecasted to **more than triple** by 2050 with expansion of High-Capacity Transit investments in rail, bus rapid transit and passenger only ferries

2022-2050 REGIONAL TRANSPORTATION PLAN



Key Highlights: What will the Plan Deliver?

2022-2050
REGIONAL TRANSPORTATION PLAN

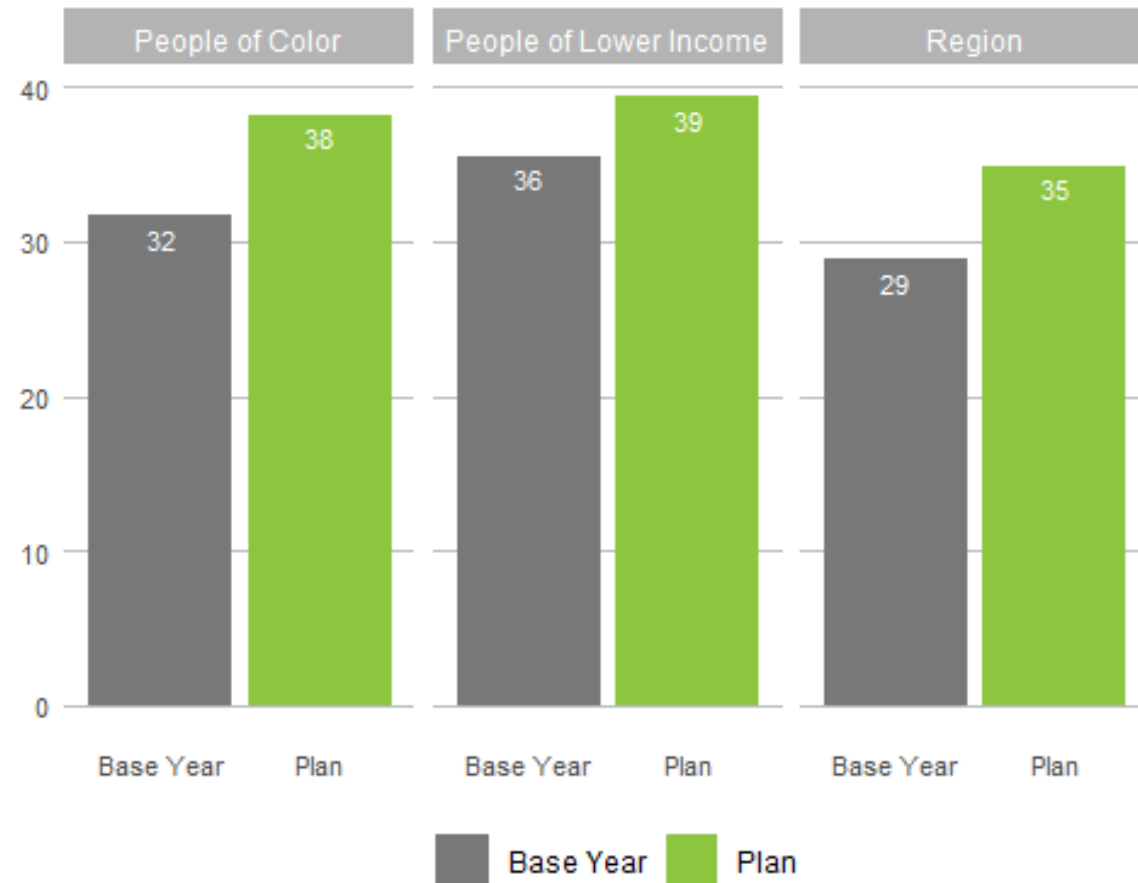


By 2050, **59%** of households will live within a 1/2 mile of high-capacity transit service



Key Highlights: What will the Plan Deliver?

By 2050, the average person will **walk or bike 21% more** than today



Key Highlights: What will the Plan Deliver?

In 2018, the average household spent an additional 62 hours a year traveling due to congestion. By the year 2050, the average household is forecast spend 53 additional hours each year traveling, a **-15%** reduction over the Base Year.

2022-2050 REGIONAL TRANSPORTATION PLAN



Key Highlights: What will the Plan Deliver?



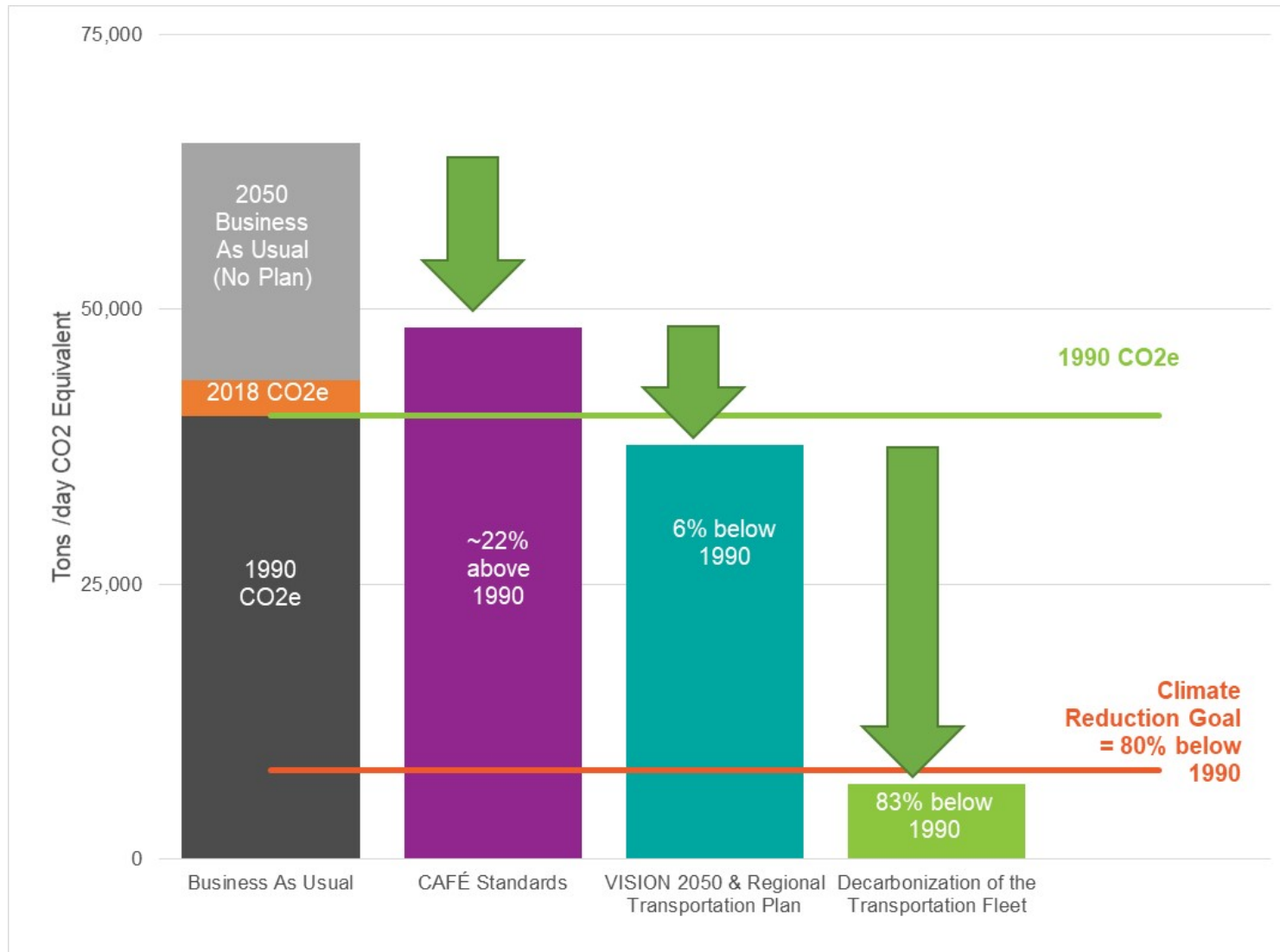
In 2018, the average household drove more than 15,900 miles per year. By the year 2050, the average household is forecast to drive approximately 12,300 miles per year, a **-23%** reduction over the Base Year.



Key Highlights: What will the Plan Deliver?

Steps to Meeting Regional Climate Goals

2022–2050
REGIONAL TRANSPORTATION PLAN

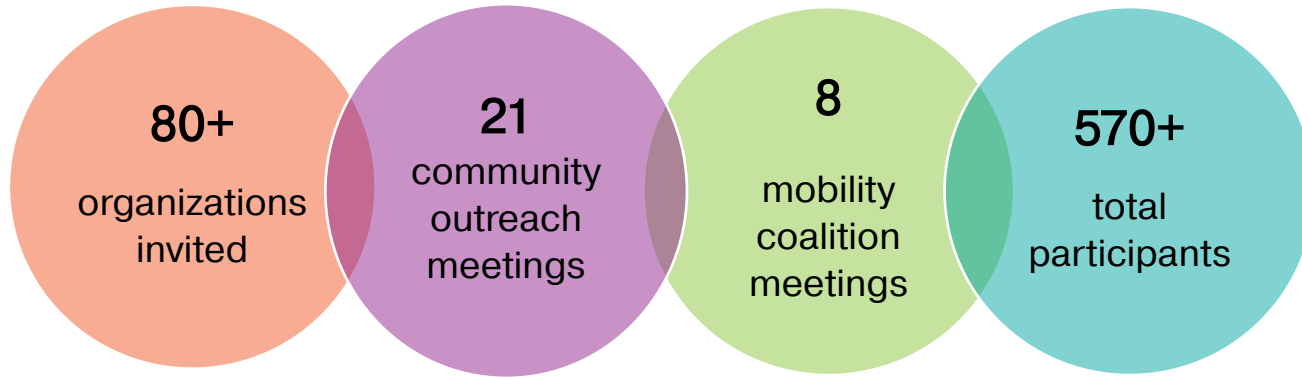


Reflecting:

- VISION 2050
- RTP investments
- Fuel economy improvements
- Transition to zero emission transportation system



What Have We Heard?



Virtual Activities:

- Presentation on RTP
- Engagement session to identify mobility needs and priorities of the communities with special transportation needs

Top six mobility needs for people with special transportation needs:

- Shorter travel times when taking regular transit or specialized transportation
- More transportation services at times when they are needed
- Accessible information about available services and language services
- Better access to health and wellness destinations
- Affordable transportation services
- More connected ADA-accessible infrastructure (i.e., curb ramps)



Coordinated Mobility Plan Prioritized Strategies

Mobility Need	Strategy	Prioritization
1. Shorter travel times when taking regular transit or specialized transportation	1.1 - Promote increased coordination between transportation providers to provide cross-jurisdiction and/or cross-agency transportation that reduces the need for long transfer wait times.	High
	1.2 - Improve on-time reliability and timeliness of transportation services for people with special transportation needs.	Other
	1.3 - Continue to identify and implement ways to increase flexibility in scheduling return trips for ADA paratransit and other demand response service trips.	Other
2. More transportation services at times when they are needed.	2.1 - Expand service levels to provide regular transit and specialized transportation services at times they are needed, especially within equity focus areas.	High
	2.2 - Develop partnerships to support context-appropriate, flexible, and/or feeder-to-fixed route transportation services in areas not well served by regular transit, like rural areas.	Other

Coordinated Mobility Plan Prioritized Strategies

Mobility Need	Strategy	Prioritization
3. More information about available services	3.1 - Conduct and tailor mobility management programs, such as travel training, mobility coalition, and information referral and assistance, to meet the needs of potential riders, including people with limited English proficiency (LEP).	High
	3.2 - Coordinate to develop a comprehensive trip planning tool, like a One-Call/One-Click platform, to help riders with special transportation needs navigate and use available services, keeping in mind language, cultural, technological, and accessibility needs.	High
4. Better access to health and wellness destinations	4.1 - Strengthen and coordinate partnerships between healthcare and transportation providers to better understand and address patients' unmet transportation needs and ensure that patients understand their transportation options.	High

Coordinated Mobility Plan Prioritized Strategies

Mobility Need	Strategy	Prioritization
5. Affordable transportation services	5.1 - Review and adjust fare structures and reduced fare programs to ensure they are fully accessible to low-income communities within service areas.	High
	5.2 - Simplify processes to apply for and renew reduced fare options like ORCA LIFT, ORCA Youth, the Regional Reduced Fare Permit (RRFP), and subsidized annual passes.	Other
6. More connected ADA-accessible infrastructure	6.1 - Build connected, ADA-accessible facilities, especially around/within health and wellness destinations, transit stations, and equity focus areas.	High

Coordinated Mobility Plan Prioritized Strategies

Mobility Need	Strategy	Prioritization
7. Better regional coordination to meet growing mobility needs	7.1 - Improve regional coordination based on the federal example of the Coordinating Council on Access and Mobility (CCAM).	High
	7.2 - Define regional roles and responsibilities before, during, and after emergencies, especially for transportation providers, emergency management agencies, and jurisdictions.	Other
	7.3 - Coordinate with the state to develop a transit asset management (TAM) framework for specialized transportation projects/programs, including those seeking capital grants, and provide technical assistance, as needed.	Other

Schedule and Next Steps



Public comment period January 13 through February 28, 2022



- **Public comment period January 13th through February 28th**
 - Opportunity to review draft RTP and submit comments
 - Visit RTP webpage at: <https://www.psrc.org/our-work/rtp>

