

Regional Open Space Conservation Plan



The central Puget Sound region's spectacular open space network provides the foundation for the region's economy and quality of life. The Regional Open Space Conservation Plan maps the open space network in King, Pierce, Snohomish and Kitsap counties and identifies priority actions needed to increase access and sustain open spaces for the long term.

The regional open space network covers about 3 million acres of public and private land and 339 miles of trail, including:

- Natural Lands
- Farmlands
- Working Forests
- Aquatic Systems
- Regional Trails
- Urban Open Space

The region's open spaces represent a significant economic asset for the region, providing services conservatively estimated at \$11.4 to \$25.2 billion each year (Earth Economics, Central Puget Sound Open Space Valuation, 2015).



Conservation Needs

A strong economy in the region is accelerating growth and development, which puts pressure on the open space network. The plan identifies approximately 463,000 acres of the regional open space network that are most at risk.

Conservation tools include easements, stewardship support, zoning, incentives, and acquisition.

Urban open space needs, as identified by the access analysis in the plan, are areas in need of nearby parks and open space.

Conservation Needs in the Regional Open Space Network

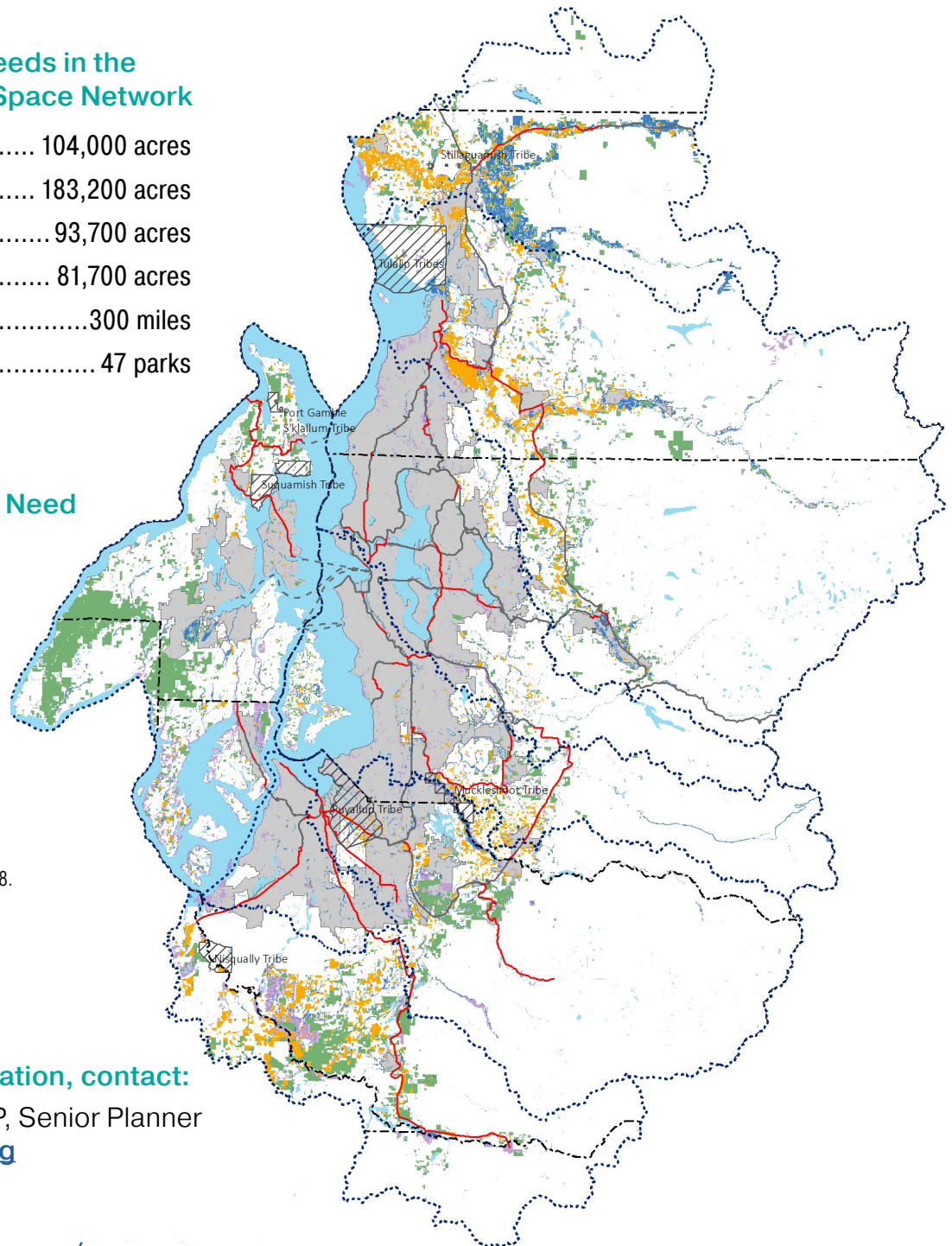
Farmland.....	104,000 acres
Working Forests	183,200 acres
Aquatic Systems	93,700 acres
Natural Lands	81,700 acres
Regional Trails	300 miles
Urban Open Space*	47 parks

* Highest priority needs.

At-Risk Lands in Need of Conservation

- Watershed boundaries
- Urban growth area
- Farmland
- Working Forests
- Aquatic Systems
- Natural Lands
- Regional Trails
- Needs
- Existing

All data sources: PSRC, 2018.



For more information, contact:

Erika Harris, AICP, Senior Planner
eharris@psrc.org

Or visit:

<https://www.psrc.org/open-space>