

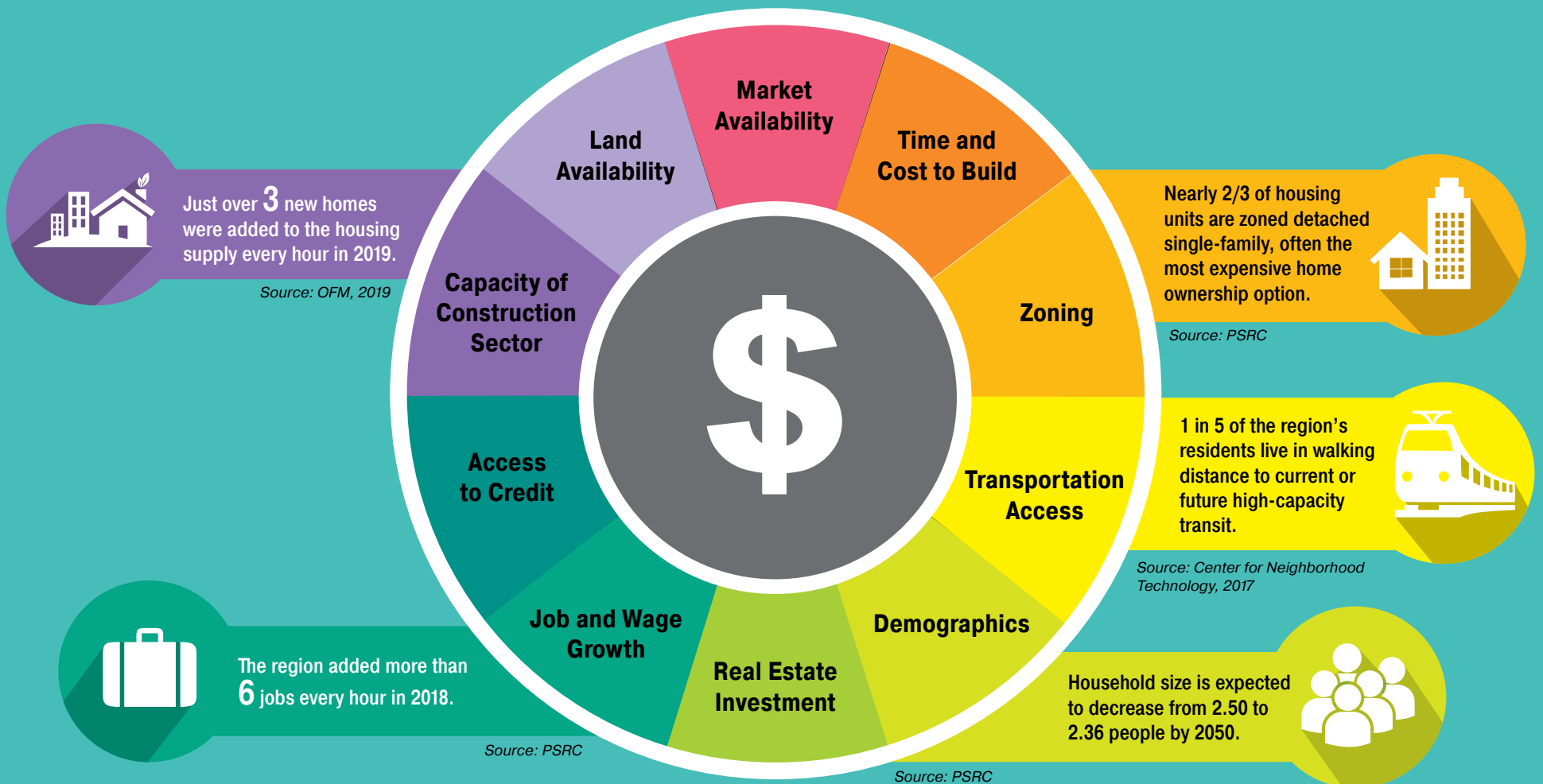
# HOUSING AFFORDABILITY IN THE CENTRAL PUGET SOUND REGION

Jan 2020



## What Factors Impact Affordability?

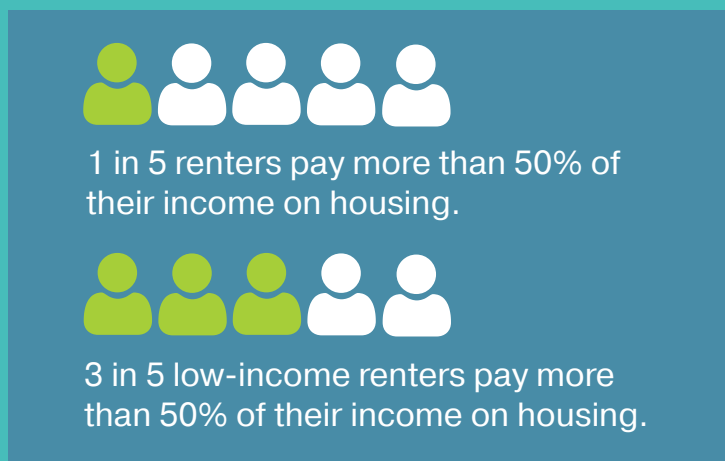
A number of factors affect the cost of renting or purchasing a home. In the central Puget Sound region, economic, demographic, and land use factors have led to an increasingly competitive housing market.



## What are the Impacts of Rising Housing Costs?

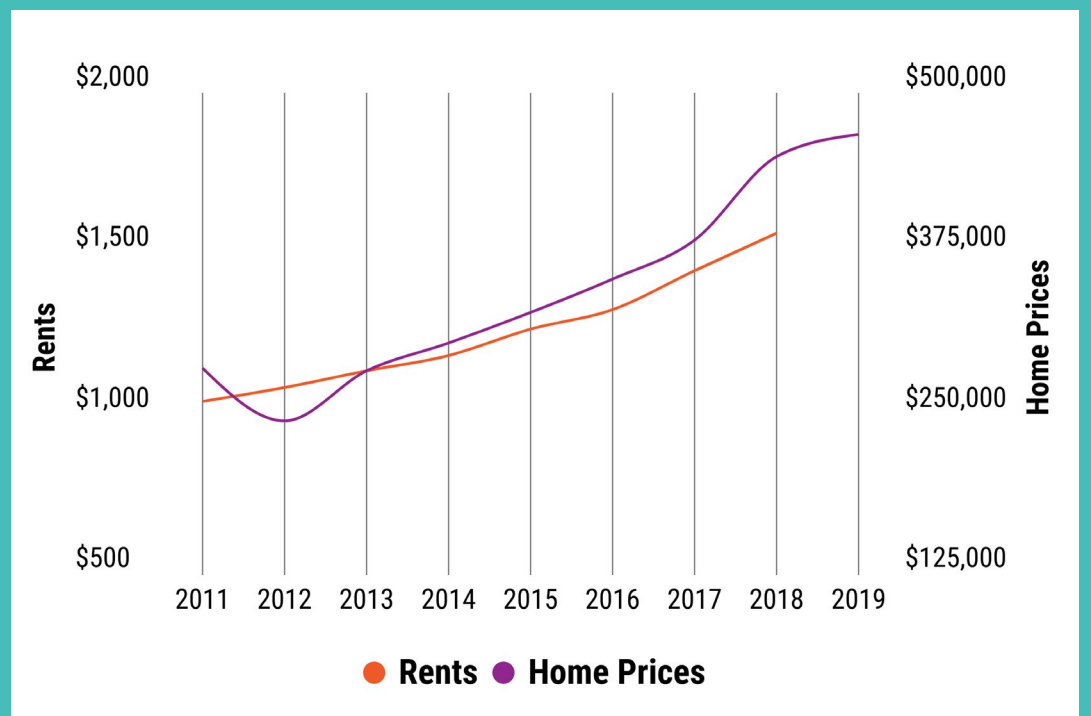
Growth in the region has contributed to increased housing costs, but these increases are not uniform throughout the region. Low-income households in particular are most affected by rising housing costs.

### Metro Area Home Prices and Rents



*Source: CHAS, 2014*

White households are four times more likely to own a home than a household of color.



A household needs to earn \$150,000 to afford a median-priced home. That is equivalent to six full time jobs at minimum wage.



Want to learn more about PSRC's housing work? Please visit [www.psrc.org/housing](http://www.psrc.org/housing) or scan the QR code to learn more about regional housing efforts.



Puget Sound Regional Council