

Stormwater Parks

Growth Management Policy Board
February 3, 2022



VISION 2050

Stormwater and Park Policies

- MPP-En-18: Reduce stormwater impacts from transportation and development through watershed planning, redevelopment and retrofit projects, and low-impact development.
- MPP-En-15: Provide parks, trails, and open space within walking distance of urban residents. Prioritize historically underserved communities for open space improvements and investments.

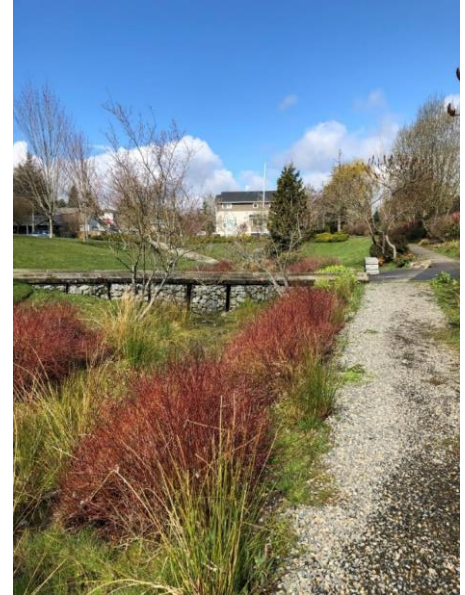


Stormwater Parks Project

National Estuary Program Grant

Multi-benefit green infrastructure projects can:

- Provide recreation
- Treat, store, and infiltrate stormwater from hundreds of acres
- Address equity when built in underserved areas
- Add natural features to an already built park
- Be funded by multiple sources



Stormwater Parks Project

3 project components:

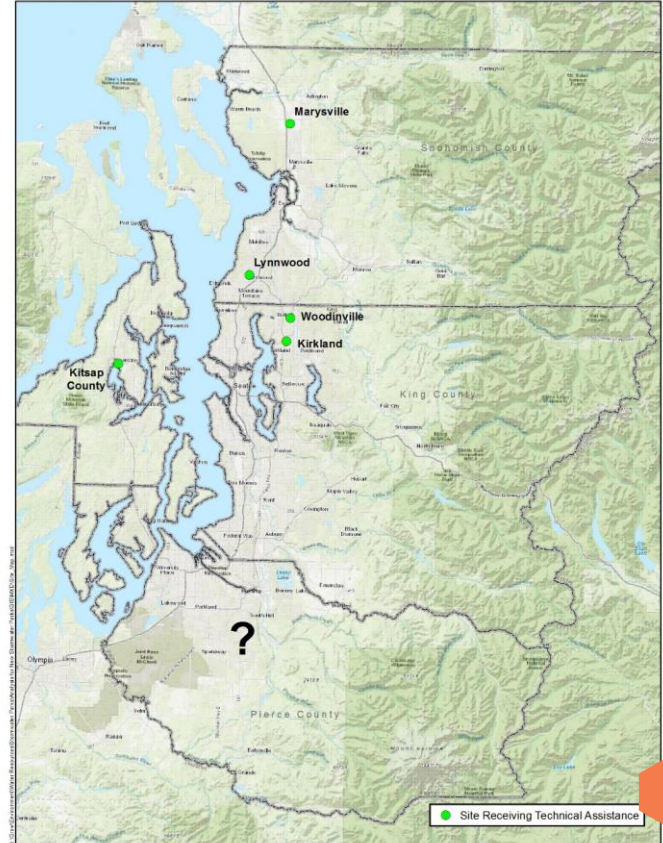
- Share lessons from already-built stormwater parks: <https://www.psrc.org/our-work/stormwater-parks>
- Identify opportunities for new stormwater parks regionwide and provide technical assistance for planning 6 stormwater parks (received additional funding)
- Develop a guidance document on planning for stormwater parks



Stormwater Parks Technical Assistance

Jurisdictions selected to receive technical assistance:

- Kirkland
- Kitsap County
- Lynnwood
- Marysville
- Woodinville
- Looking for a Pierce County site



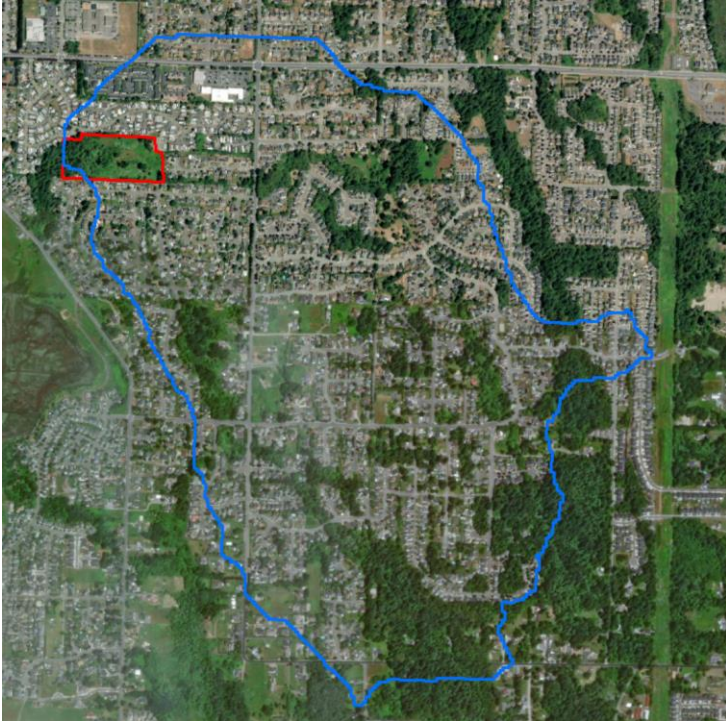
Selection Criteria

Selection Criteria for Technical Assistance:

- Pollutant Loading/Size of Drainage Basin
- Salmon Benefit
- Impervious Surface
- Equitable Park Access
- Urban Center
- Community Commitment



Regionwide Stormwater Park Site Suitability Analysis



Analysis Criteria

- Publicly-owned parcel
- Salmon presence
- Pollutant loading
- Catchment/drainage basin
- Impervious surface
- Critical areas (steep slopes and wetlands)
- Building coverage



Stormwater Park Planning Technical Assistance

Consultant services to be provided:

- Feasibility studies
- Concept designs to support public engagement
- Cost estimates

Some jurisdictions did not apply because they needed more time



Schedule

- Dec 2021-Sept 2022: Technical assistance provided, including deliverables to support next grants
- October 2022: Stormwater parks guidance document available



www.psrc.org/our-work/stormwater-parks



Thank you

Erika Harris
Senior Planner
eharris@psrc.org

