

# Industrial Lands Analysis

Freight Advisory Committee

February 9, 2022



Puget Sound Regional Council

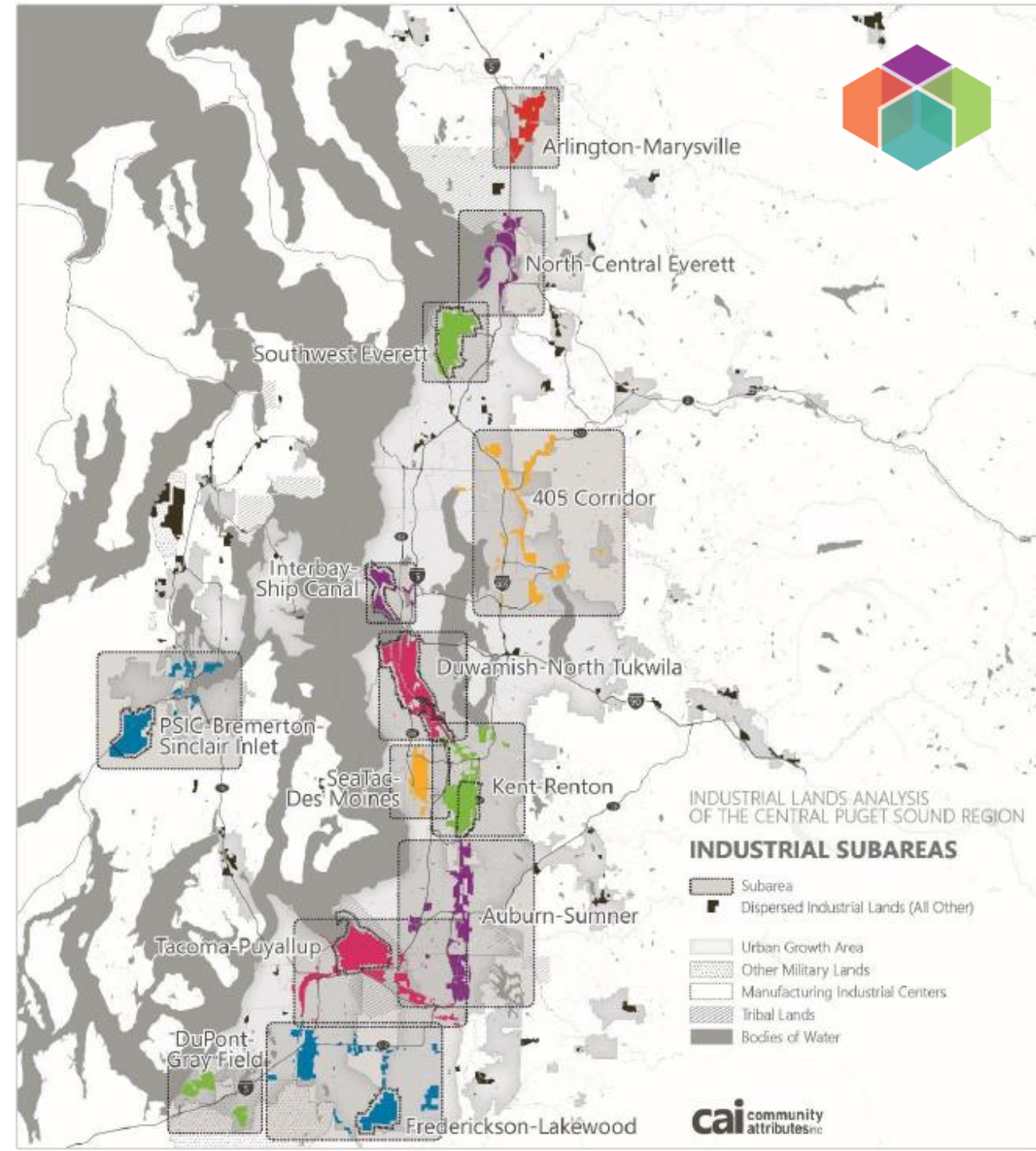
# Presentation Overview

- 2015 Industrial Lands Analysis
- Why update the report?
- Industrial lands trends and data
- Engagement and process
- Board discussion & feedback



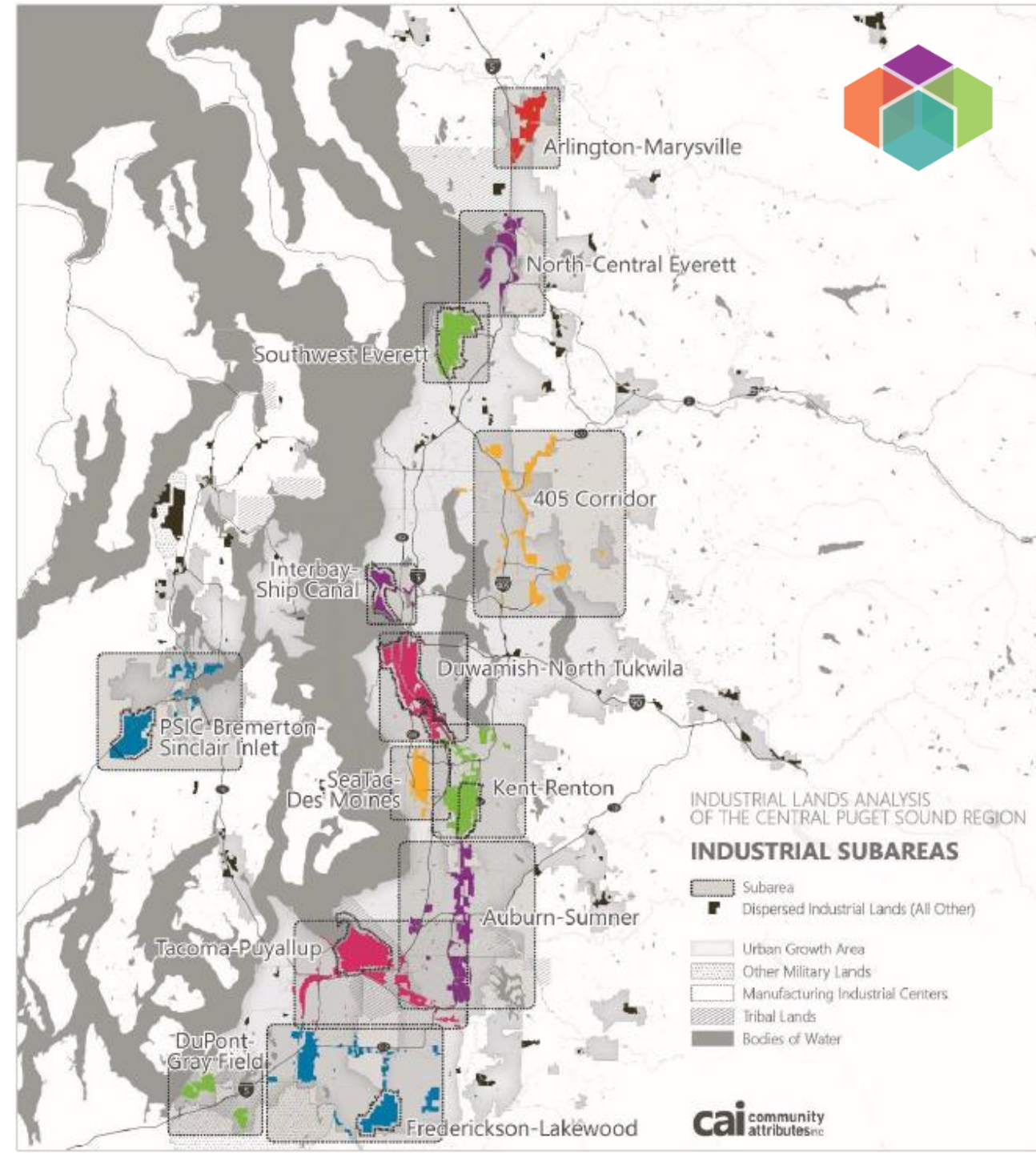
# 2015 Industrial Lands Analysis

- 13 industrial land concentrations/subareas
- About 30,000 net acres
- About 27% of jobs
- 10 regionally designated Manufacturing/Industrial Centers (MIC)
- Critical infrastructure such as shipping terminals, airports, rail yards



# 2015 Industrial Lands Analysis

- Sufficient overall supply through 2040
- Changes in manufacturing
- Demand varies across region
- Development pressures
- Compatibility with adjacent lands



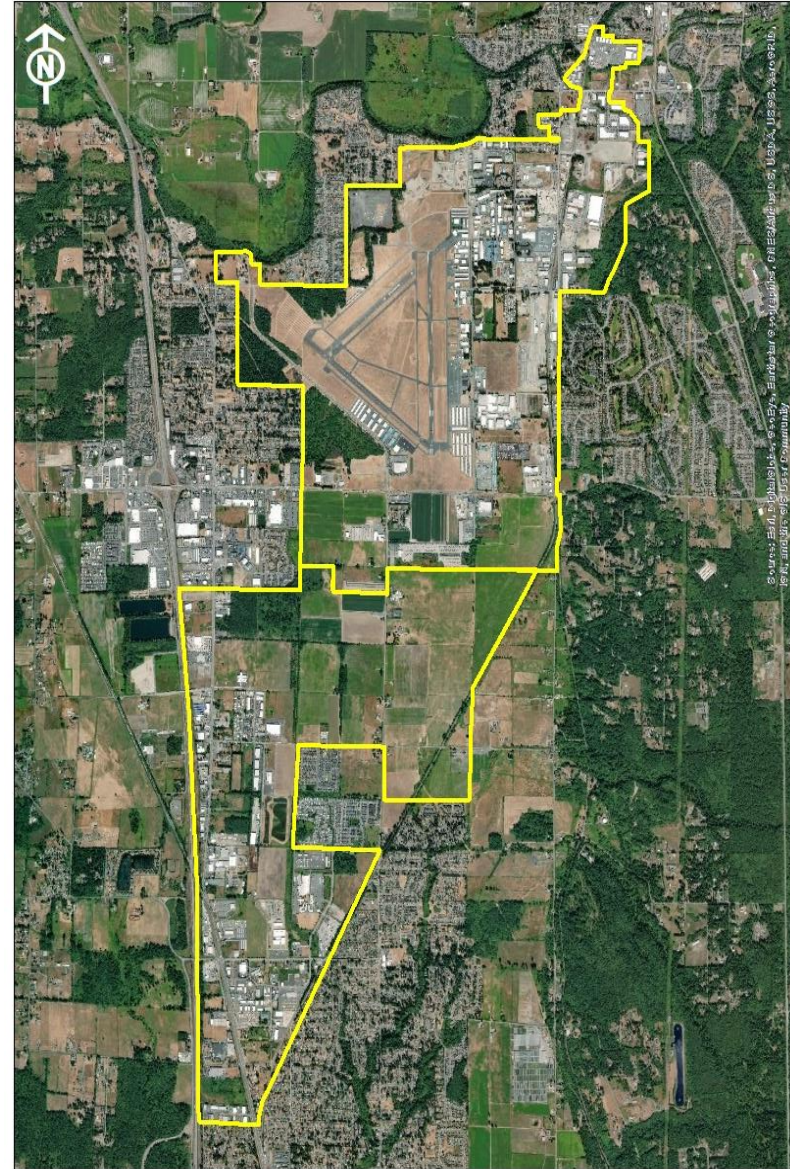
# Why update the report?

- VISION 2050 direction
- Regional Economic Strategy
- Important to economy and employment
- Tie to critical infrastructure
- Support for local comprehensive plan updates



# Industrial Lands Trends & Data

- Changes to sales tax collection & distribution
- Updated centers framework and two new Manufacturing/Industrial Centers designated
- Growth of package distribution and delivery
- Pressure to convert to non-industrial uses
- Increased emphasis on equity and access to jobs



# Proposed Update Process



- Three boards/committees
  - Growth Management Policy Board
  - Economic Development District Board
  - Freight Advisory Committee
- Ad-hoc working group of technical staff
- Project schedule
  - Spring – data collection and outreach
  - Summer – draft report
  - Fall – final report



# Growth & Economic Board Discussions

- Summary of comments:
  - Board support for updating Industrial Lands Analysis
  - Valuable data for cities and ports
  - Interest in available industrial space in Kitsap County
  - Concerns regarding non-industrial uses and development pressures
  - Interest in improving equitable access to higher paying jobs
  - Challenges related to port/freight congestion
  - Need for transit service to support industrial jobs



# Board Discussion & Feedback



- *What are trends and changes impacting industrial lands that this report update might consider?*
- *What are ways that an update to the industrial lands analysis might be useful for your community?*
- *How could the industrial lands analysis help the region improve equitable access to employment?*

# Thank you.

Paul Inghram, FAICP  
Director of Growth Management  
[Plnghram@psrc.org](mailto:Plnghram@psrc.org)



Puget Sound Regional Council